

Map
OF
Artesia

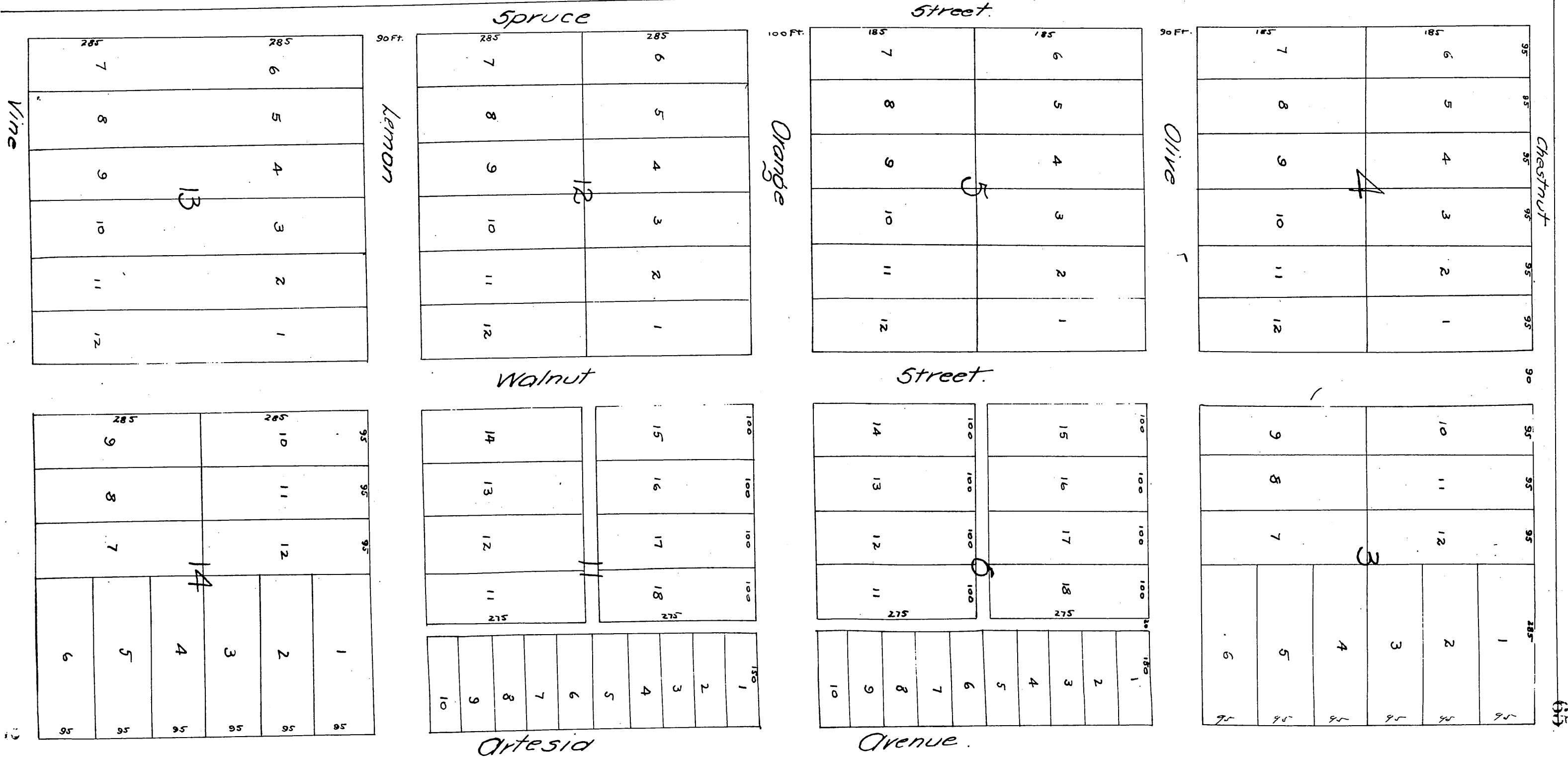
PROPERTY OF THE
Los Angeles Immigration
Land Co-operative Association.

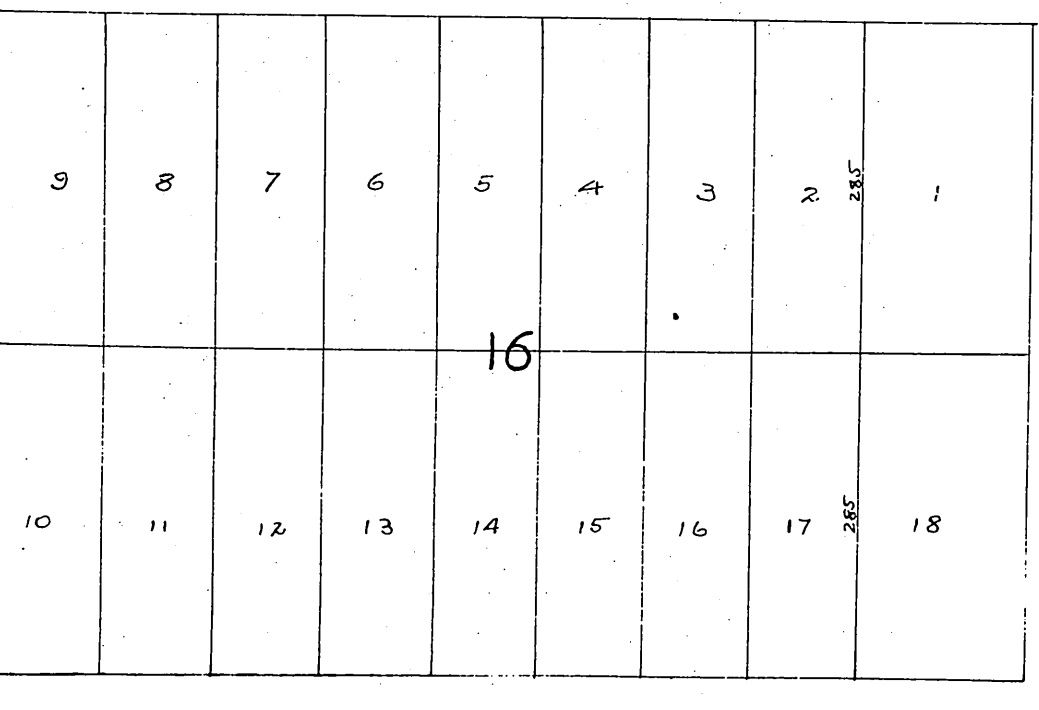
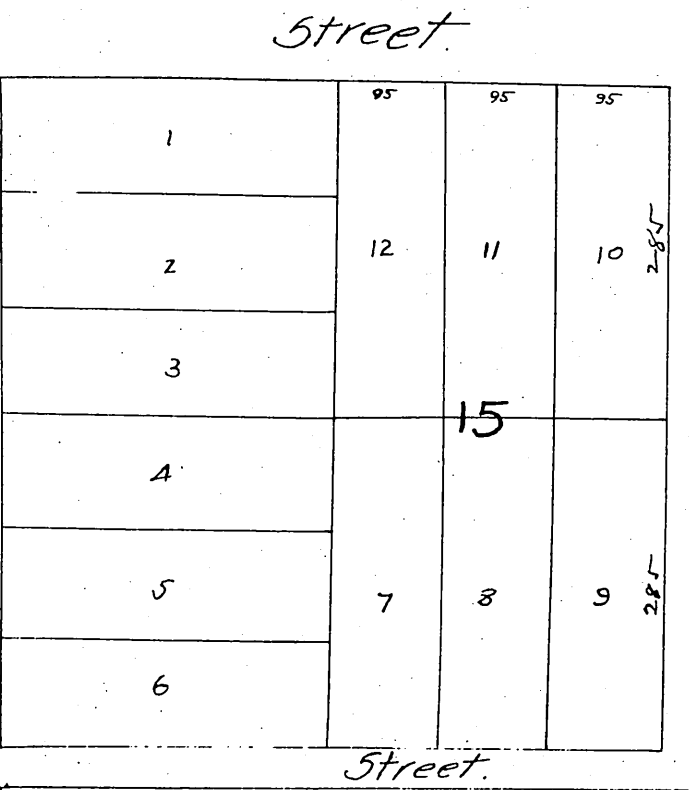
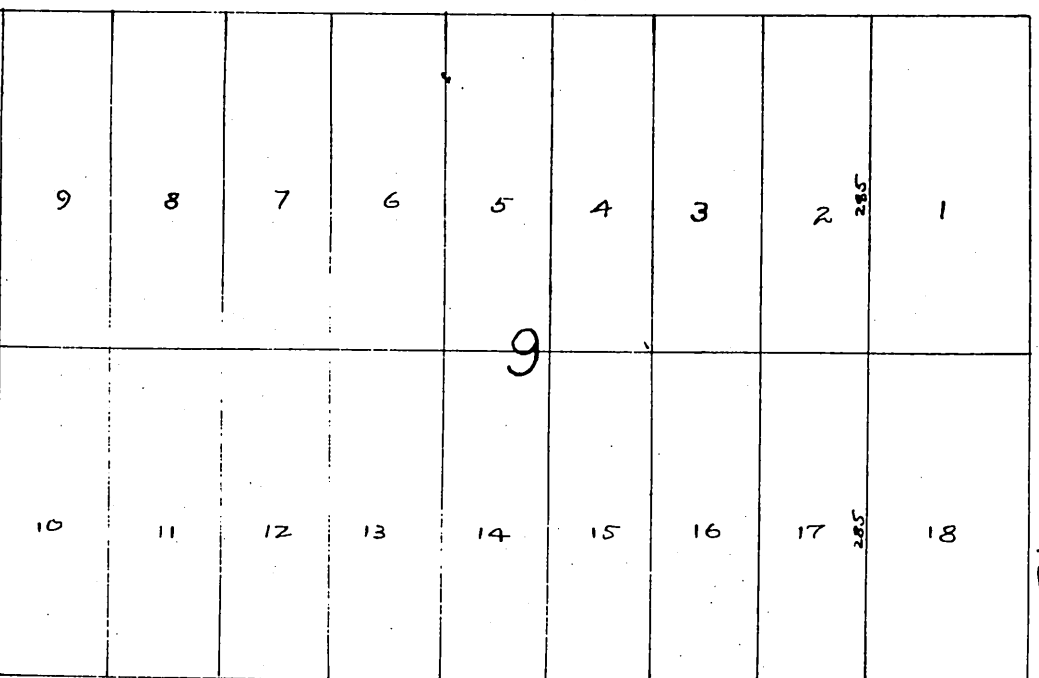
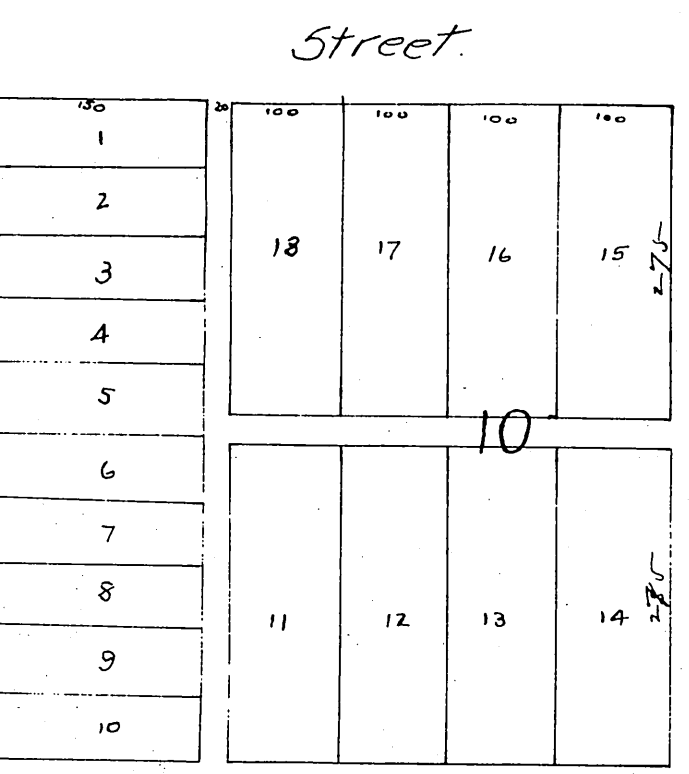
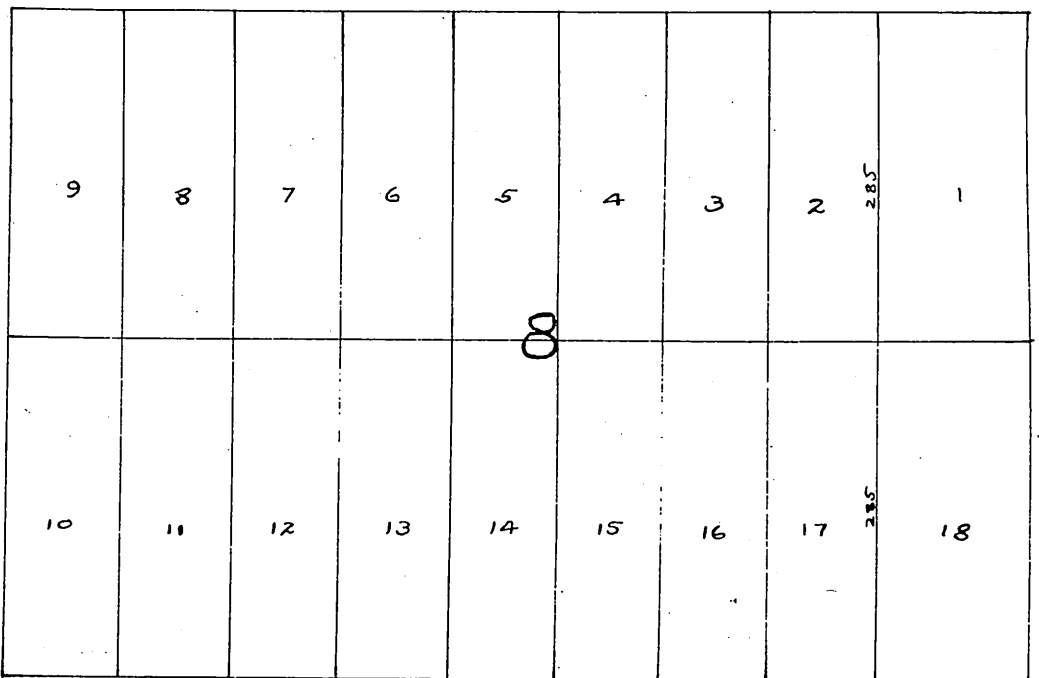
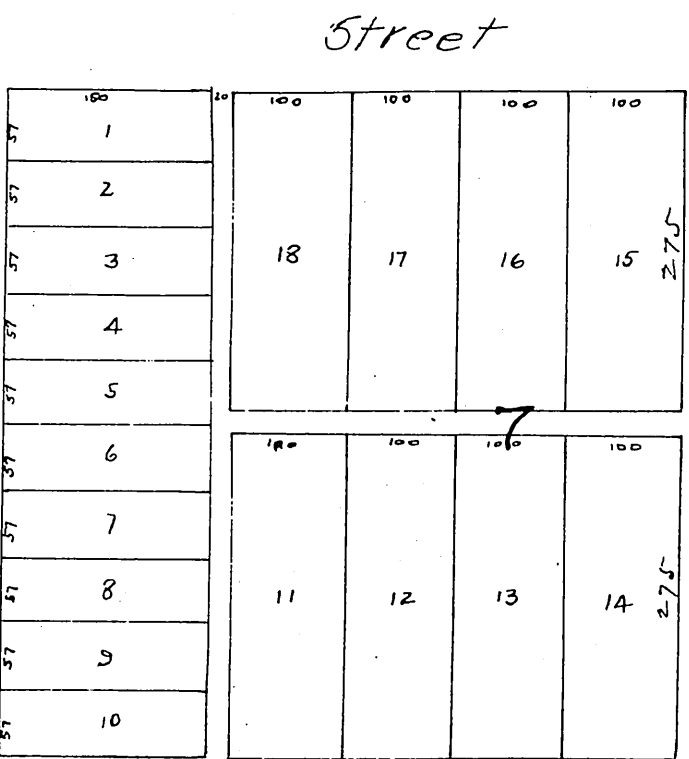
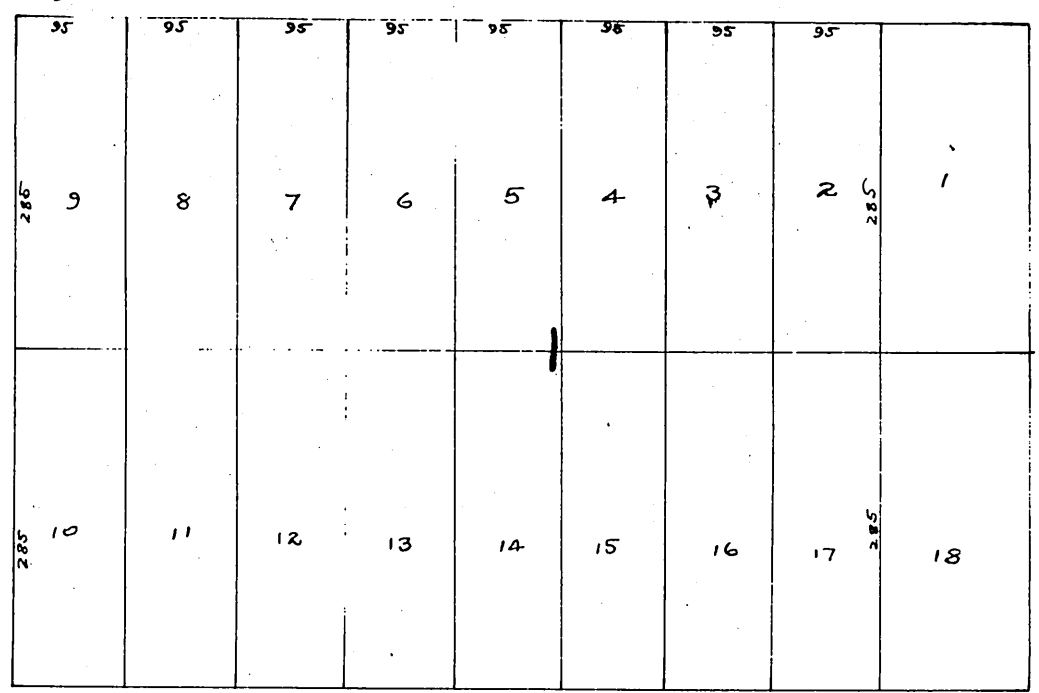
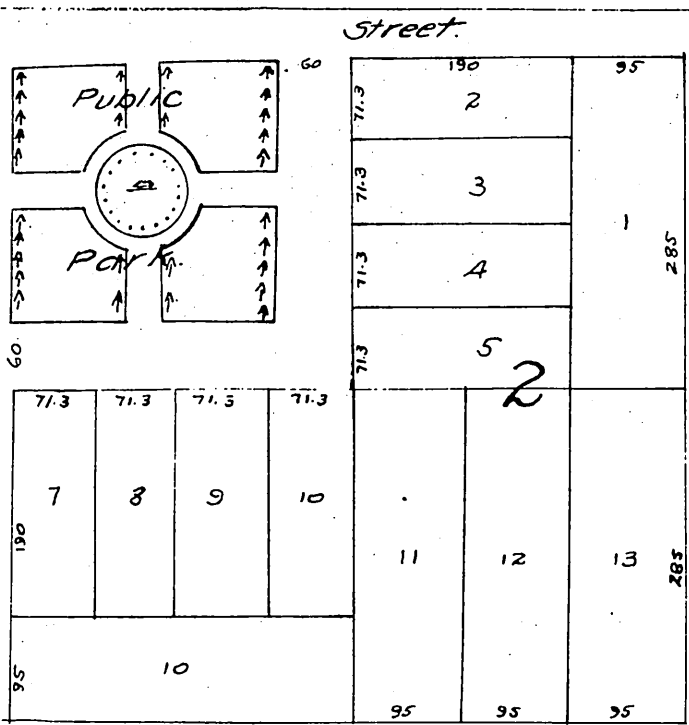
3 Miles 5.5 West of
Norwalk Station,
Anaheim Branch S.P.
R.R. in Los Angeles Co. California.

Surveyed by A. Higbie.

Platted Feb. 1, 1875
By F.B. Fanning.

This Map of the Village of Artesia was approved and adopted at a meeting of the Board of Directors of the Los Angeles Immigration and Land Co-operative Association held at the office of said Association in Los Angeles Cal. on the 17th day of February A.D. 1875 and the same ordered to be filed for Record in the Recorders Office of Los Angeles Co. California.
Witness the hands of the President and Secretary and the Corporate Seal of said Association
The day and year above named — Jhas. O. Sary. Pres.
U.M. Holt. Secy.





Street

Cypress

Street

Pine

A full, true and correct copy of the Original, recorded March 1st A.D. 1875 at 50 minutes past 4 P.M. at request of L.M. Holt. J.W. Gillette, County Recorder.