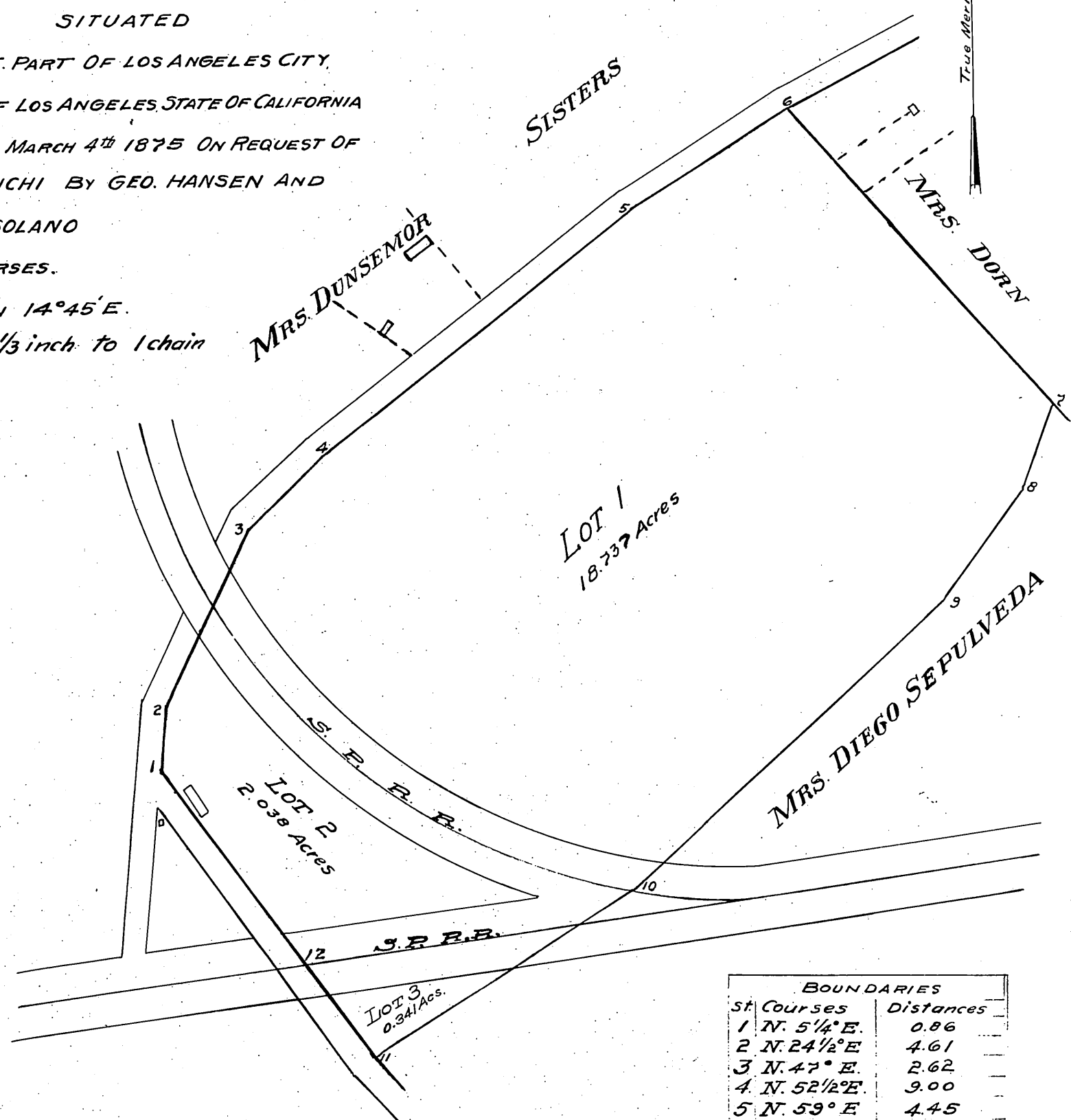
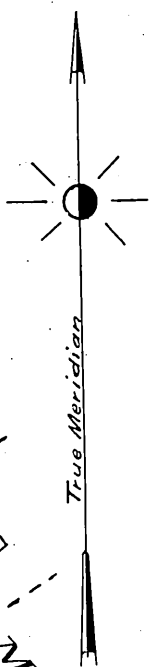


MAP  
OF THE  
GARDEN  
OF  
FRANK SABICHI ESQ.

SITUATED  
IN THE N.E. PART OF LOS ANGELES CITY,  
COUNTY OF LOS ANGELES, STATE OF CALIFORNIA  
SURVEYED MARCH 4<sup>th</sup> 1875 ON REQUEST OF  
SAID SABICHI BY GEO. HANSEN AND  
ALFRED SOLANO  
TRUE COURSES.  
VARIATION 14°45' E.  
Scale: of 1/3 inch to 1 chain



Vacation Portion CHAVEZ ST. Ord. 7546

BOUNDARIES	
St. Courses	Distances
1 N. 5 1/4° E.	0.86
2 N. 24 1/2° E.	4.61
3 N. 47° E.	2.62
4 N. 52 1/2° E.	9.00
5 N. 59° E.	4.45
6 S. 35 1/2° E.	9.50
7 S. 21° W.	2.03
8 S. 36° W.	2.10
9 S. 48° W.	9.85
10 S. 59° W.	6.90
11 N. 37 1/2° W.	2.60
12 N. 33 1/2° W.	5.95
Area	23.40 Acres
of which is contained	
in the Lot 1	18.737
" 2	2.038
" 3	.341
R. R.	2.284
Total:	23.400

A FULL TRUE AND CORRECT COPY OF THE ORIGINAL MAP.  
RECORDED (ON A ONE THIRD SCALE TO ACCOMMODATE THE  
SIZE OF THIS BOOK) ON MARCH-12, 1875 AT 45 MIN'S PAST 4 P.M.

By Request of C.J. SHEPHERD ETAL.  
J.W. GILLETTE  
County Recorder.