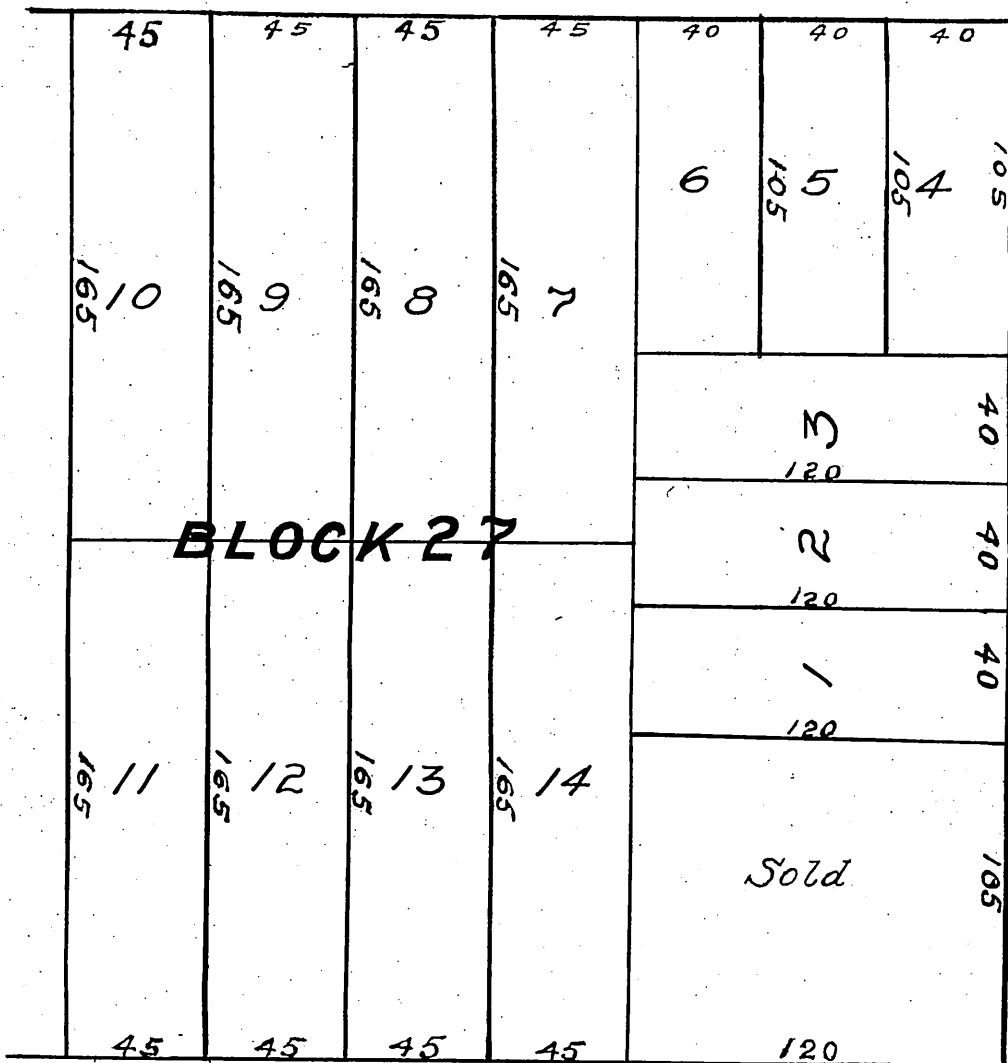


E. BOUTONS



MAP OF SUBDIVISION
OF
NORTH HALF OF BLOCK 27
ORD'S SURVEY
OF
LOS ANGELES CITY, CAL.

CHARITY STREET



7th STREET

OLIVE STREET

A FULL TRUE AND CORRECT COPY OF THE ORIGINAL MAP
RECORDED THE 20th DAY OF MARCH A.D. 1875 AT 15 MIN'S PAST 12 P.M.
BY REQUEST OF E. BOUTON.

J.W. GILLETTE County Recorder

The said map is here recorded on 3/8 scale to meet size of page

Widening of Grand Ave. D:11-24