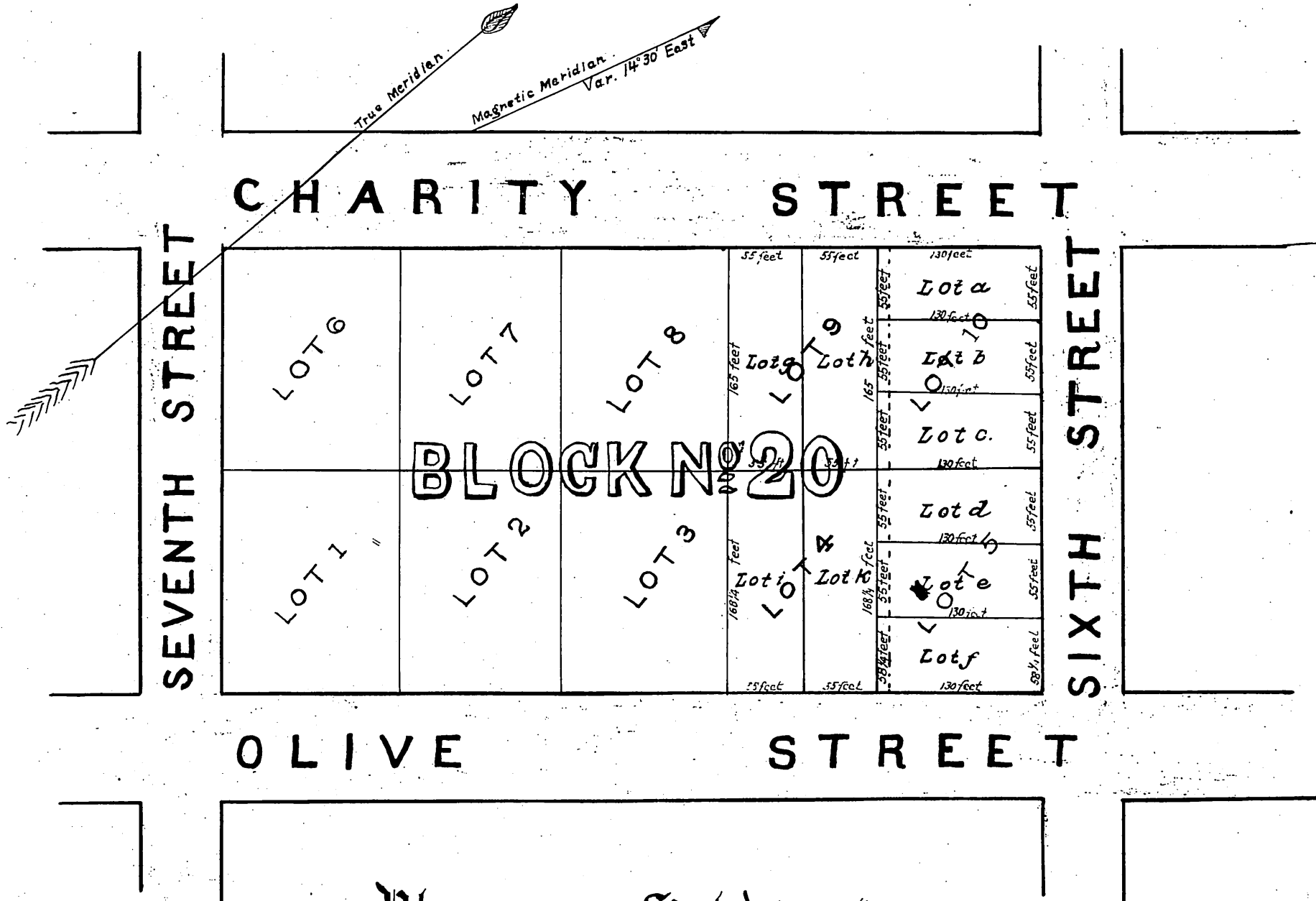


Comp'd
1877

True Meridian
Magnetic Meridian
Var. 14° 30' East



For condemnation widening 6TH ST. see C.F. 905 D. 31-27 D. 7106-334

Recorded at the request of Constant Meyer, Mayor AD-1875 at 9 o'clock A.M.
 J. N. Gillett, County Recorder.
 H. S. Langley, Deputy.
 {Recorded on 1/2 scale to meet size of this book.}

Plan of the Subdivision
 of
 LOTS NO 4, 5, 9 & 10, BLOCK NO 20, ORD'S SURVEY,

LOS ANGELES CITY, CALIFORNIA,

the Property of

Constant Meyer Esq^{re}.

SCALE OF 50 FEET TO ONE INCH

LOS ANGELES January 26th 1870

Frank Leouvreur

