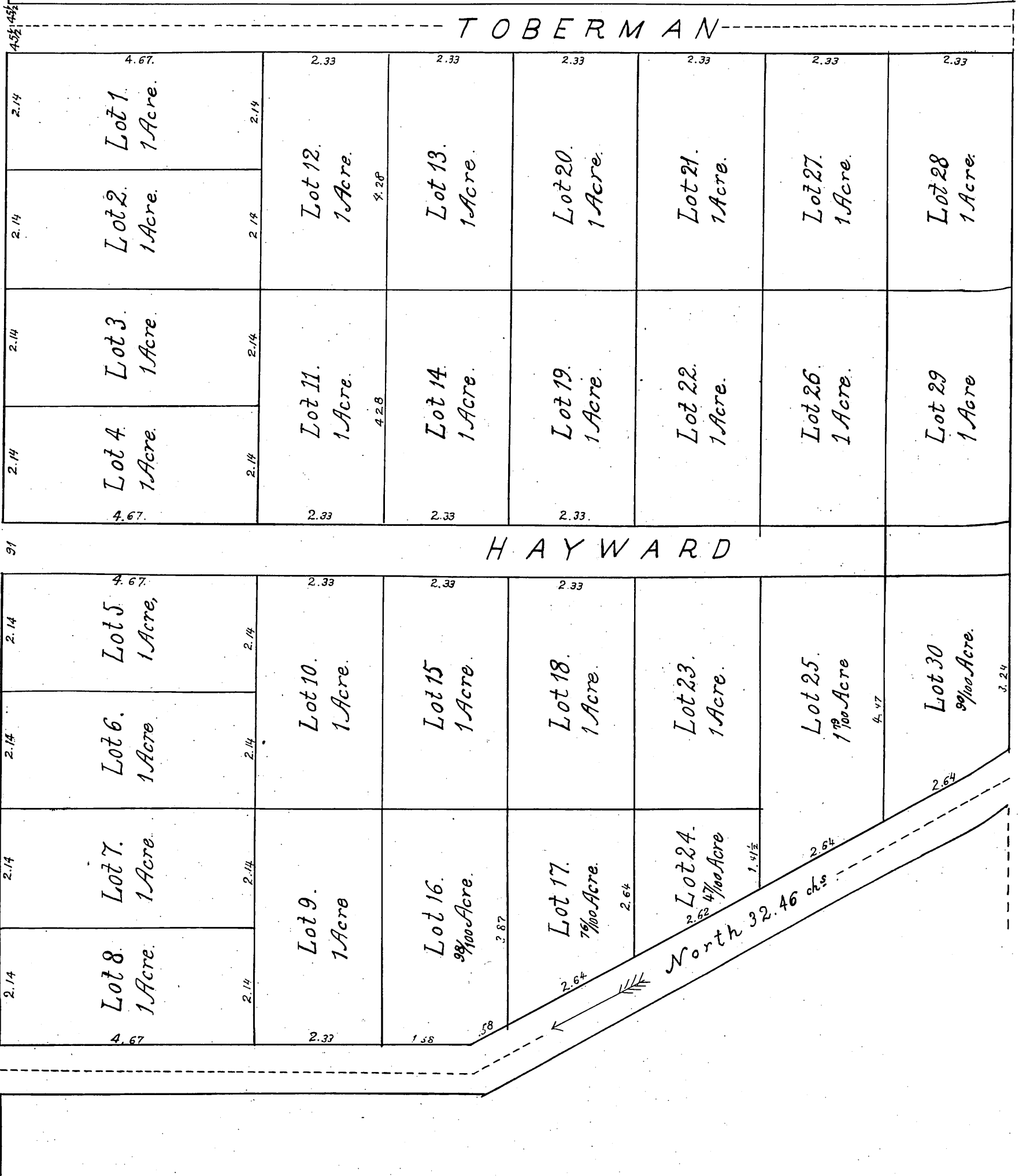


WASHINGTON STR.



Recorded at the request of W. A. Hoover, Esq.
 May 1st A.D. 1875, at 30 minutes past 11 o'clock A.M.

J. A. Gillette, Co. Recorder
 By D. S. Lovejoy, Deputy.

{Recorded on a 1/2 scale to meet size of this book}

For subdivision of Lots 8, 9, 10 - part of 5 See 83-1

For opening 24th St. par. Lot 37 II 1237-130 II 7-183

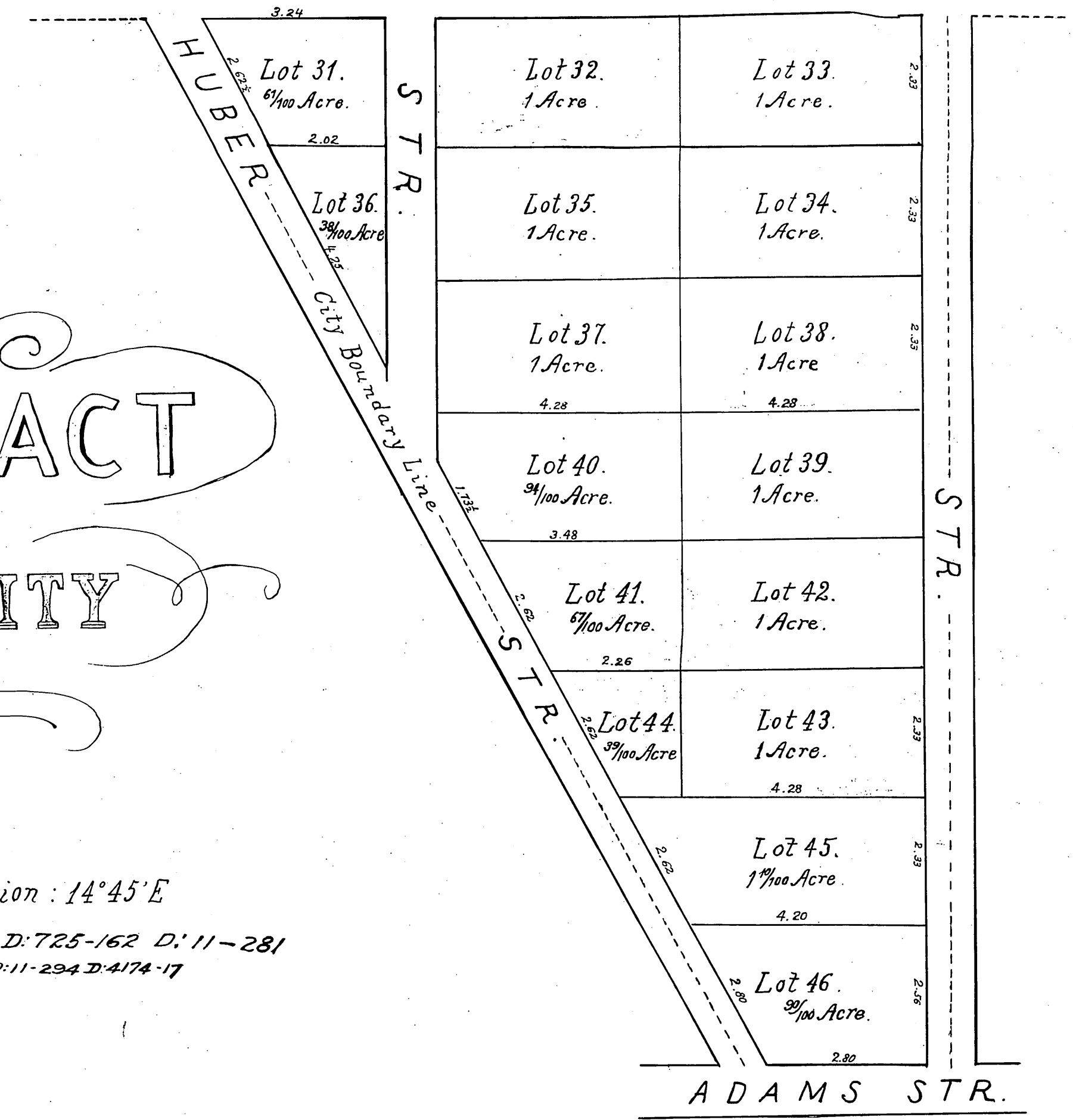
V.V.

MAP
 (OF THE)
HOOVER TRACT
 IN
LOS ANGELES CITY
 CAL.

John Goldsworthy Surveyor

Scale: 1 chain to 1 inch. True Courses. Variation: 14° 45' E

Deed N49° lots 34 & 35 58' lot 32 D: 11-44 D: 725-162 D: 11-281
 " Swly 8' lot 33 D: 11-284 D: 4102-194 D: 11-294 D: 4174-17



46

