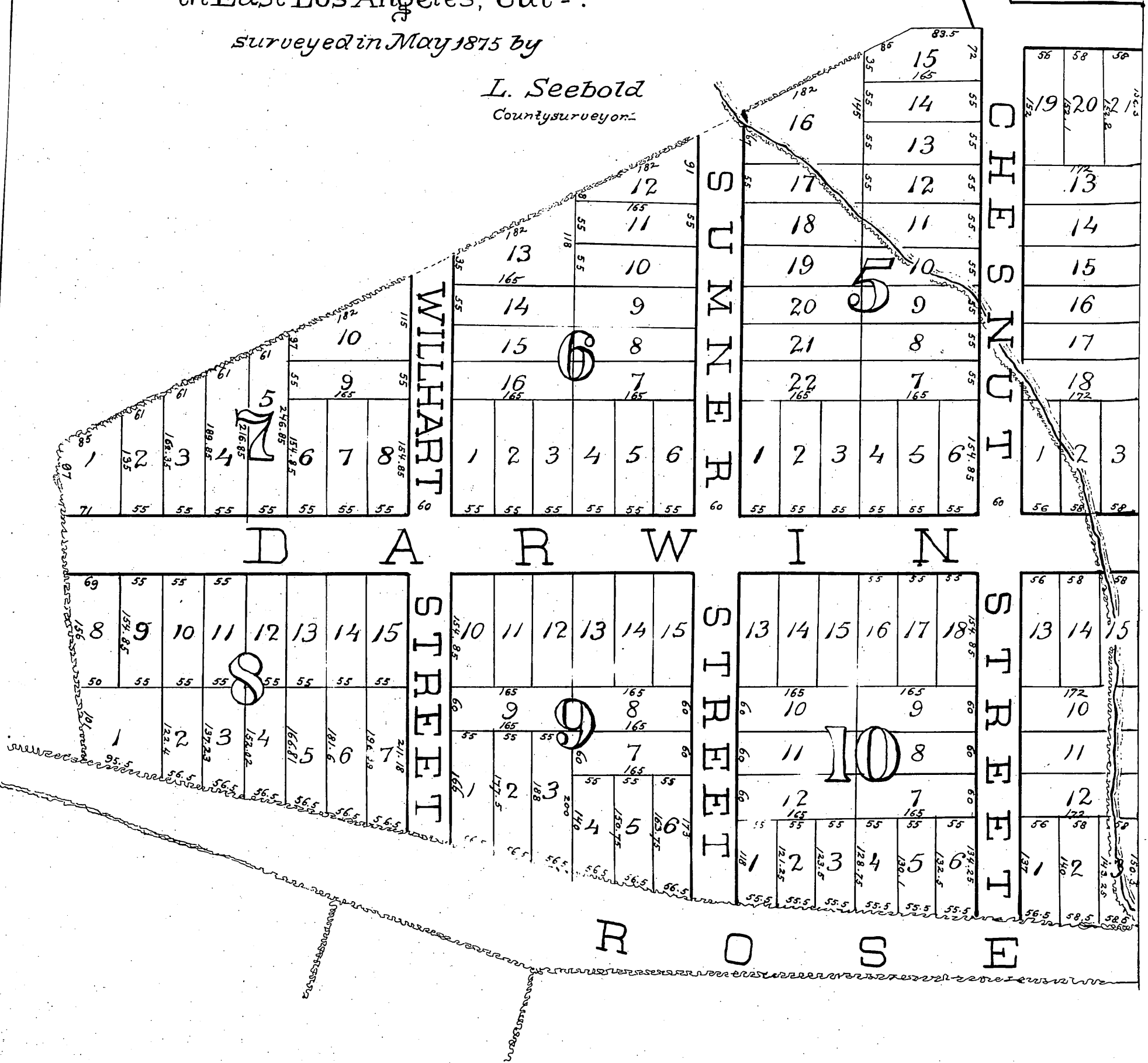


Homestead tract OF THE PIONEER BUILDING LOT ASSOCIATION

in East Los Angeles, Cal^a.

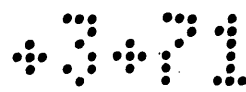
surveyed in May 1875 by

L. Seebold
County surveyor.

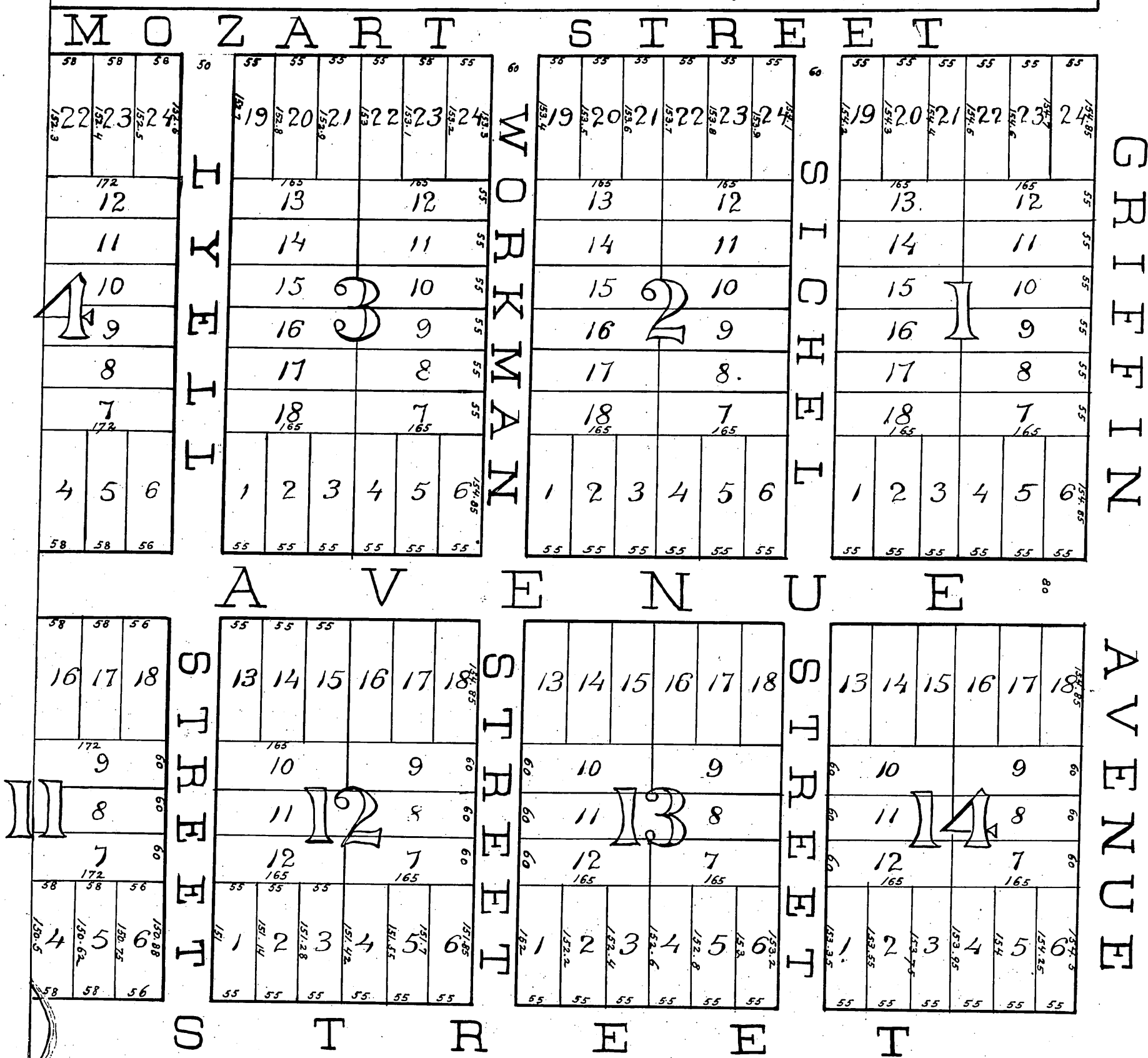


Scale 150 Feet Per Inch.
True Meridian Courses.
Var. 14° 45' East.

For copy of this map
See M.R. 32-64



264 LOTS.



A full, true, and correct copy of the above expressed portion of an original map,
which portion of such original map recorded June 12, A.D. 1875 at 11 A.M.

At the request of Pioneer Building Lot Association.

- Lots 5 & 6 Blk. 1 to L.A. City Sch. Dist. D:37-8 O.R. 2047-159
- Lot 3 " 1 " " " " " D:42-29-Cert. C.F. 28673
- Lot 3 " 1 " " " " " D:42-37-O.R. 3436-144
- Lot 2 " 1 " " " " " D:43-2 O.R. 3565-184