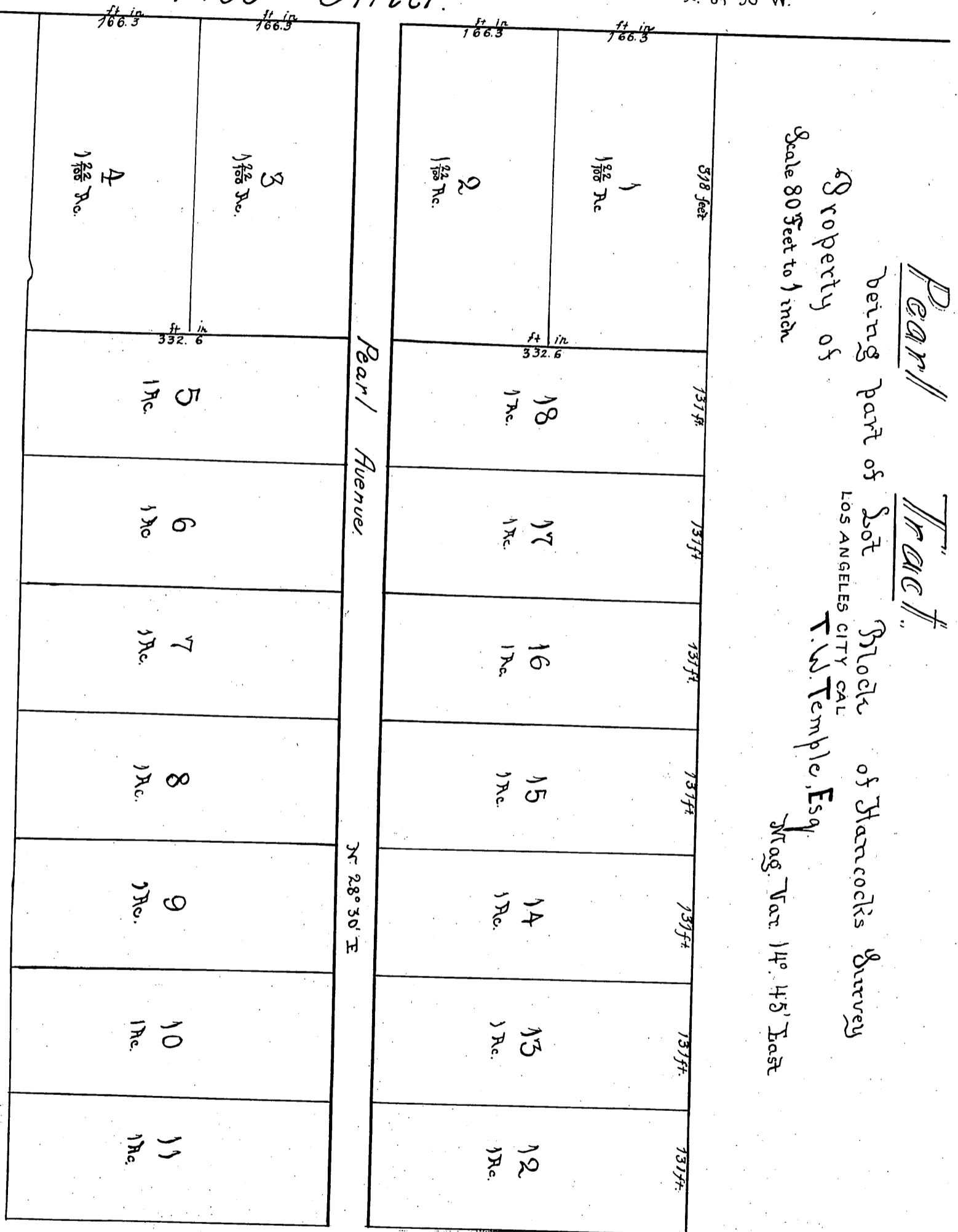


# Pico Street

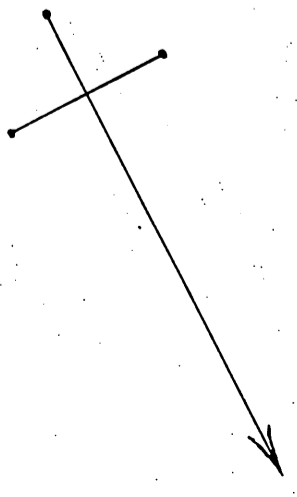
N. 61° 30' W.



Pearl Tract  
 being part of Lot Block of Hancock's Survey  
 LOS ANGELES CITY CAL  
 T.W. Temple, Esq.  
 Mag. Var. 14° 45' East  
 Scale 80 Feet to 1 inch

A full, true and correct copy of the original,  
 recorded June 18, 1875 at twenty mins past 3 P.M.  
 At the request of T.W. Temple  
 Recorded at a 2/3 scale to meet size of Book.

J.W. Gillette. County Recorder.



Comp  
 J.W. Temple