

FRONT	14	15	16	17	18	BAY	14	15	16	17	18	OCEAN	14	15	16	17	18	PACIFIC	14	15	16	17	18	STRAND
	6				10		6				10		6				10		6				10	
	7	1			11		7	2			11		7	3			11		7	4			11	
	8				12		8				12		8				12		8				12	
	9				13		9				13		9				13		9				13	
	1	2	3	4	5		1	2	3	4	5		1	2	3	4	5		1	2	3	4	5	
60					80					60					40									

PROMENADE

Pacific

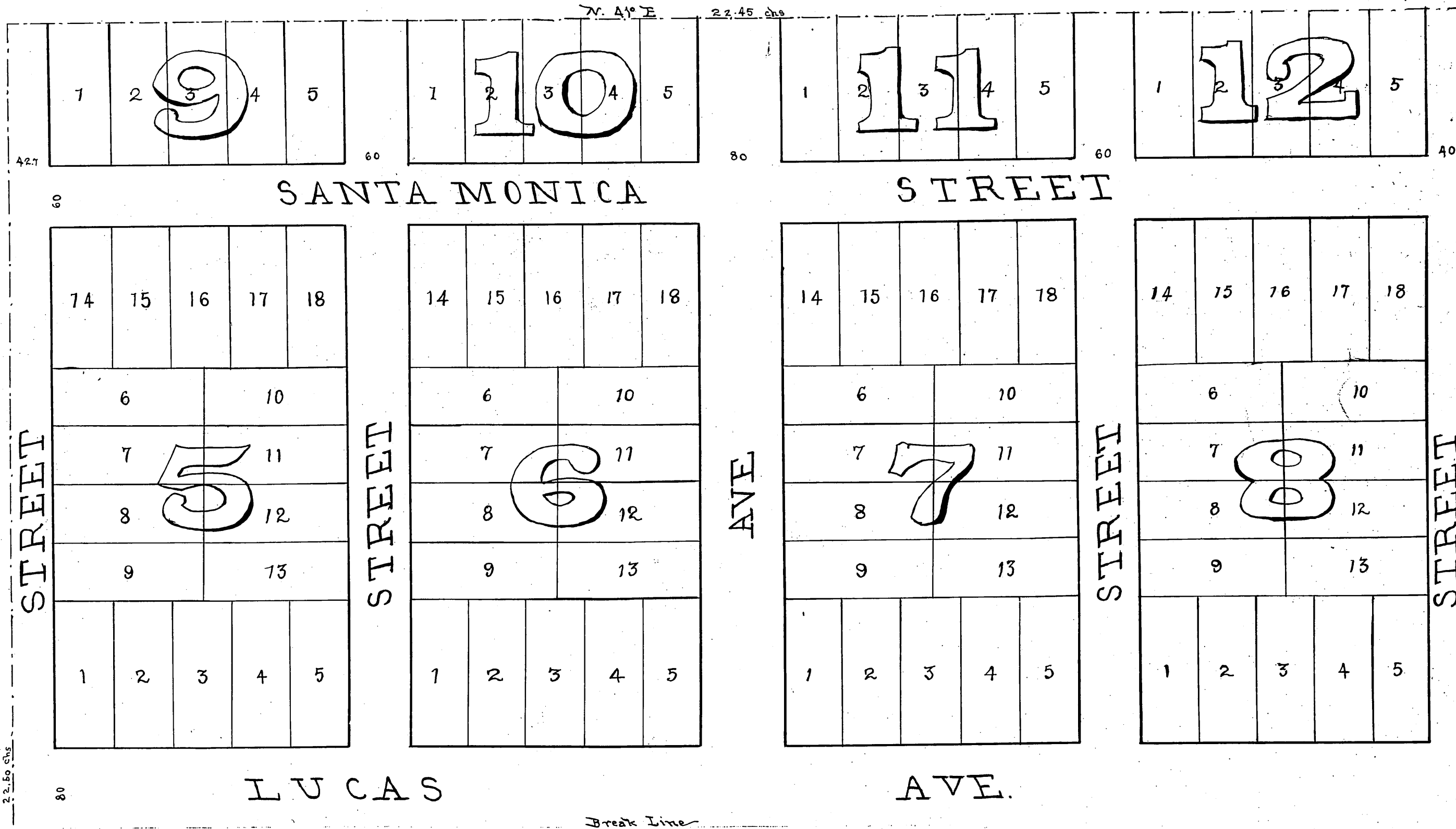
Ocean

Deed for strip for sidewalk K.D. 9-187 D: 3245-154
 " " 20.62 street D: 9-187 D: 3312-28 D: 9-198
 For Crescent Bay Park see D: 18-159 Ord. 149

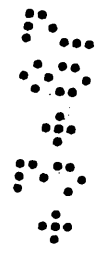
For Strand St., Pacific St. and Promenade see D: 6-222 D: 1054-140 S.C.C. 24,443

Recorded July 14, A.D. 1875. at twenty mins past 3 PM, by request of J.W. Haverstick.

Scale 100 feet to 1 inch
 SURVEYED AND DRAWN May 1875 Rumble & Baertner



Note: All lots have the dimensions of 60 feet by 150 feet.



Completed