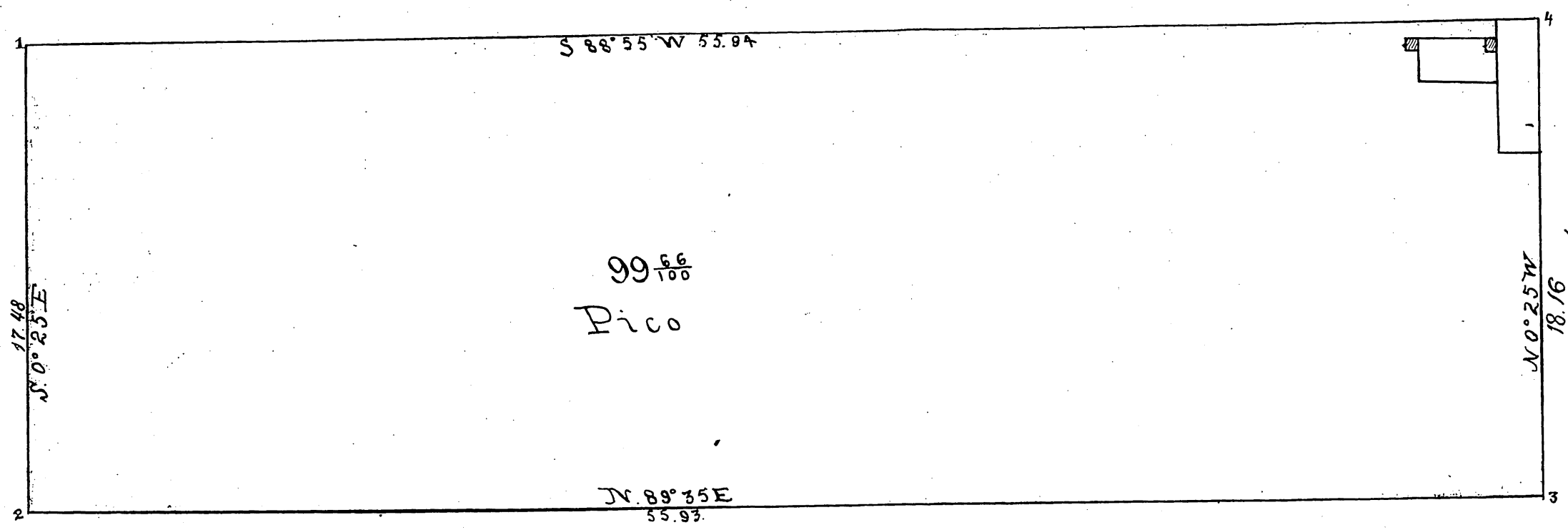
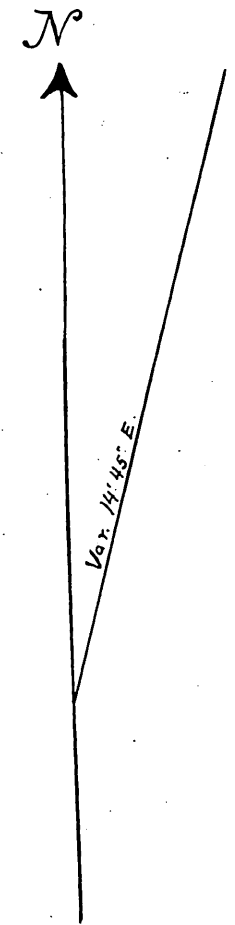


Conf'd.
1875

I hereby certify that this is a correct Map of a survey made by me Aug 21 1875 and that the lines and courses are the same as shown to me by Felipe Sugo and is the land stated by him to have been conveyed to Pio Pico by him by Deed of April 15. 1872 containing 100 Acres more or less.
Geo. Bridges Surveyor.

MAP OF SURVEY
OF THE
PICO TRACT.
ON THE
San Antonio Rancho
O'Donnell



Recorded the 24th day of Aug. A.D. 1875 at 35 mins past 3 P.M. by request of P. Pico. Surveyed Aug. 21st 1875

J. W. Gillette
Co. Recorder.

W. A. Locke C.E.

Scale 1 inch = 5 chains.