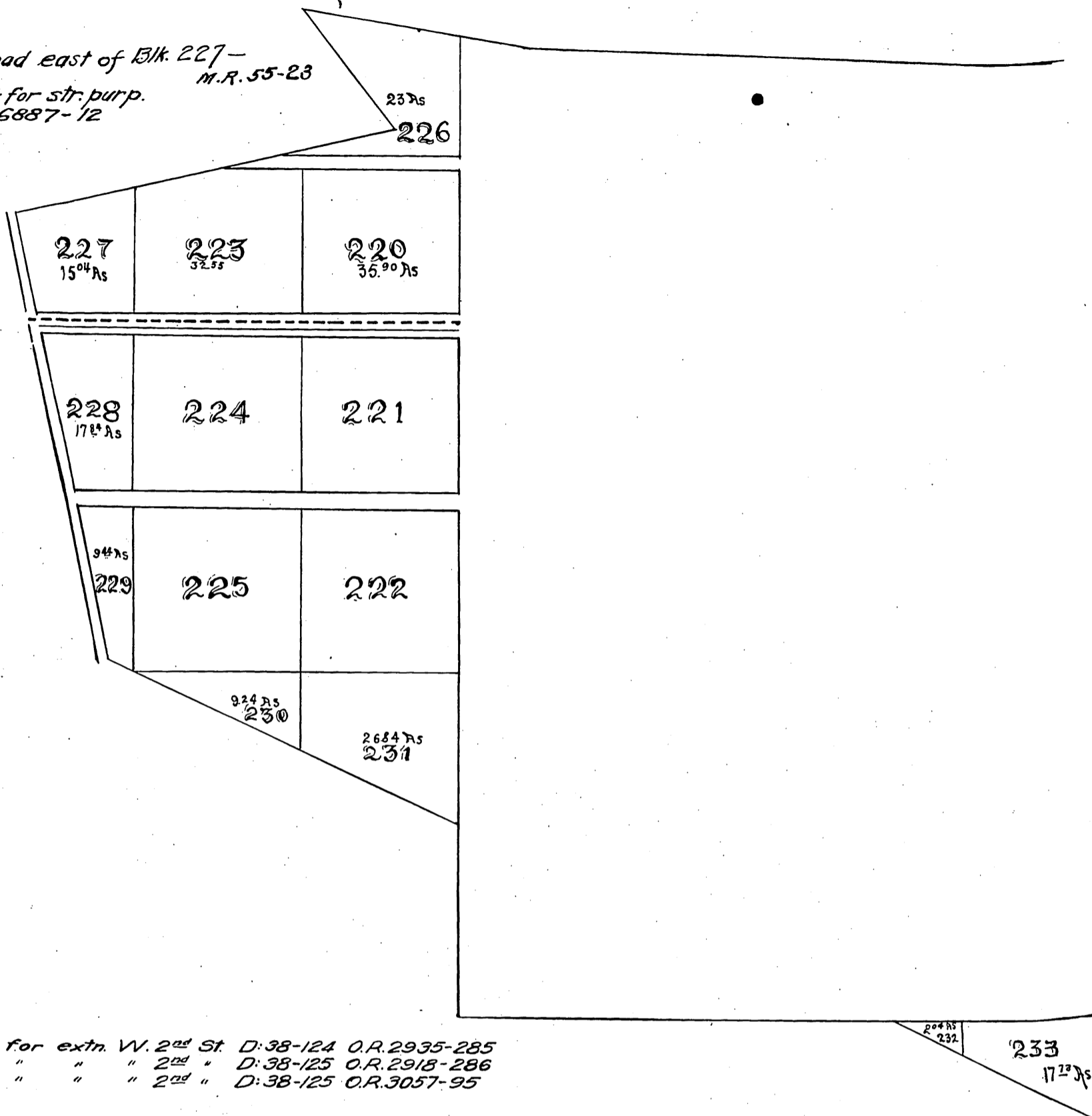


For copy of this map  
See M.R. 32-69

Vacation of road east of Blk. 227 -  
M.R. 55-23  
Por. of Blk. 224 for str. purp.  
D: 25-229 D: 6887-12



Por. Blk. 228 for extn. W. 2<sup>nd</sup> St. D: 38-124 O.R. 2935-285  
Por. " 224 " " " 2<sup>nd</sup> " D: 38-125 O.R. 2918-286  
Por. " 224 " " " 2<sup>nd</sup> " D: 38-125 O.R. 3057-95

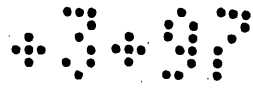
# PLAT OF THE POMONA TRACT

Reduced to 1/3<sup>rd</sup> size  
For map of POMONA see pages 90 and 91

### Note

Full Blocks in the above map are of three sizes. The largest size contain 40 Acres each. The second size 10 Acres each and the smaller size 2 1/2 Acres each, measuring in every instance to the centres of the adjoining Streets. The 40 Acre blocks are subdivided into Five and Ten acre lots measuring from the centre of the streets. The 10 Acre blocks are subdivided into 8 equal lots. Not including Streets. The 2 1/2 Acre blocks are subdivided into lots on the same basis. Similar lots in the same blocks all being of the same width. Lots in the 2 1/2 Acre blocks along Garey and 31<sup>st</sup> Avenues are only 105 feet deep. All other lots in full blocks are 120 feet deep. The Depot Grounds which cuts into Blocks 29, 30, 31, 32, 33, 34, 35, and 36 takes a strip of land 30 feet in width from said blocks. Lots in Blocks 20, 21, 22, 23, 24, and 13 are 65 by 160 ft. except the lots in block 20 which are only 50 ft 8 inches wide and lot 1 block 13 which is 88 feet wide. Lots 3 & 4 in Blocks 159 and 150 are 195 feet wide. All Alleys are 20 ft wide. The land embraced in Pomona and the Pomona Tract as described in those certain Contracts with the L.A. S. & C. Association recorded respectively in book 35 of Deeds page 635 Same Book page 630 and Book 37, page 599. Records of Los Angeles County.

For copy of this map  
See M.R. 32-70



Mountain Ave Blk 199 = D. 14-57  
 Dead por Holt Ave D: 6-178 D: 3221-170  
 " " " " " " in Blk 200 D: 14-48 D: 3650-245  
 " " " " " " 202 D: 14-61 D: 5772-242.  
 Vac. por. road bet. Blk. 200 & 201 See D: 14-300 Ord No. 393  
 Vac. of Str. and por. of Streets in Blk. 198 see D: 25-275 M.R. 299-18  
 and M. 14-9

	200 18.87 Rs	201 17.42 Rs	215 15.22 Rs	216 14.24 Rs	601 Rs 241
	199 35.90 Rs	202 35.90 Rs	214 35.90 Rs	217 35.90 Rs	240 7.64 Rs
	198 41.00 Rs	203 41.00 Rs	213 41.00 Rs	218 37.88 Rs	
	197	204	212	219 22.00 Rs	
	196	205	211	239 87.65 Rs	
	195	206	210 35.42 Rs		
	38.20 Rs 234	193	194	207	209 22.00 Rs
		17.00 Rs 235	35.30 Rs 236	208	238 8.80 Rs
				13.22 Rs 237	

I  
 hereby certify  
 that pages 90 and 91 and  
 these pages 96 and 97 of this Book,  
 show and contain a full, true and correct  
 copy of the original map, recorded this  
 20 day of August, A.D. 1875 at 3 o'clock  
 P.M. at request of L. M. Holt, Sec'y  
 of Los Angeles Immigration and  
 Land Co-Operative Associa-  
 tion. J. W. Gillette.  
 County Recorder.

*Handwritten mark or signature*