

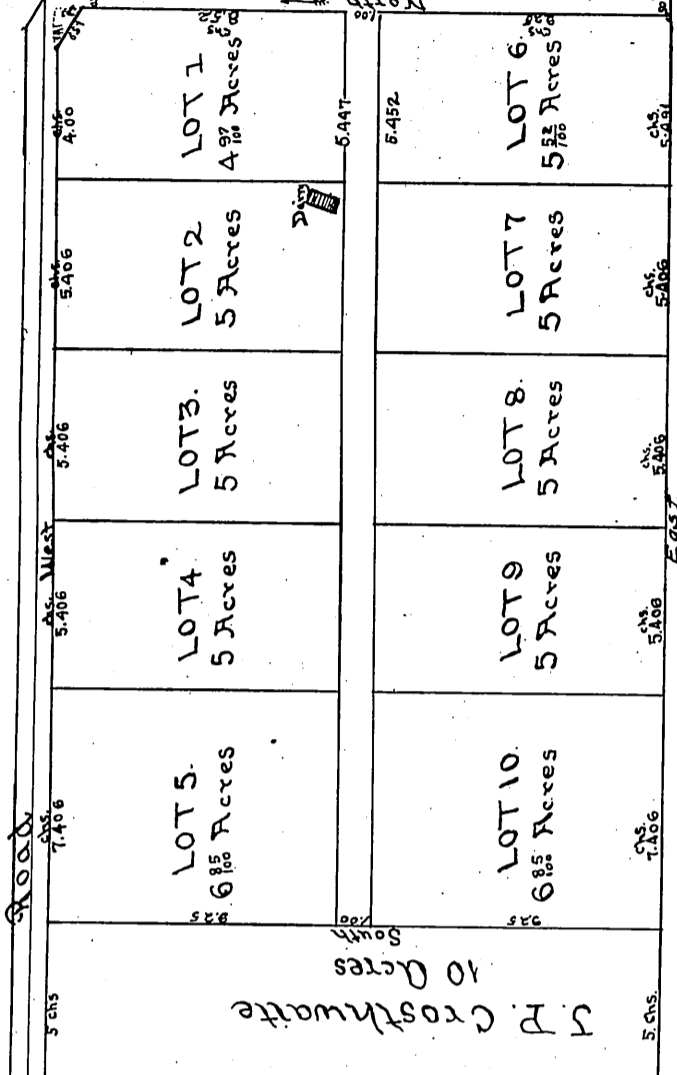
SEC 31

SEC 36

WASHINGTON STREET

HOOPER TRACT

Western Boundary Line of the City of Los Angeles



D. FREEMAN
80 Acres

FREEMAN TRACT

3-11-1875
OF THE

A full true and correct copy of the original map recorded Nov 1st AD 1875 at 10 o'clock, at request of D. Freeman.
{Recorded on a one-half scale}

J.W. Gillette — County Recorder

Surveyed September 1875

by Rumble & Co. Surveyors

Scale 3 Chains to 1 Inch

51.00

Copy by J.W. Gillette