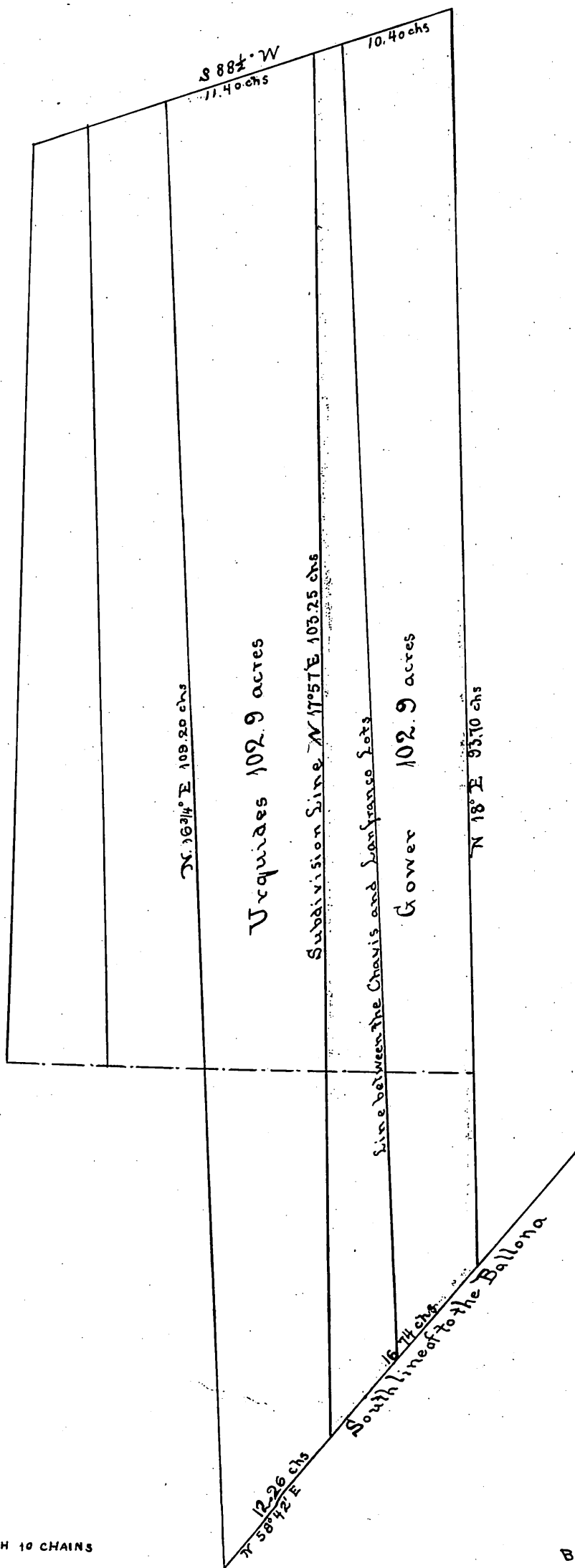


MAP showing the subdivision OF THE URQUIDEZ & GOWER TRACTS

Dec. 8 1875



SCALE 1 INCH 10 CHAINS

BALDWIN & LOCKE SURVEYORS

Recorded at the request of John T. Gower, December 20th A.D. 1875 at 58 minutes past 9 P.M. of said day

J. B. Gillette - County Recorder

Comp'd
1875