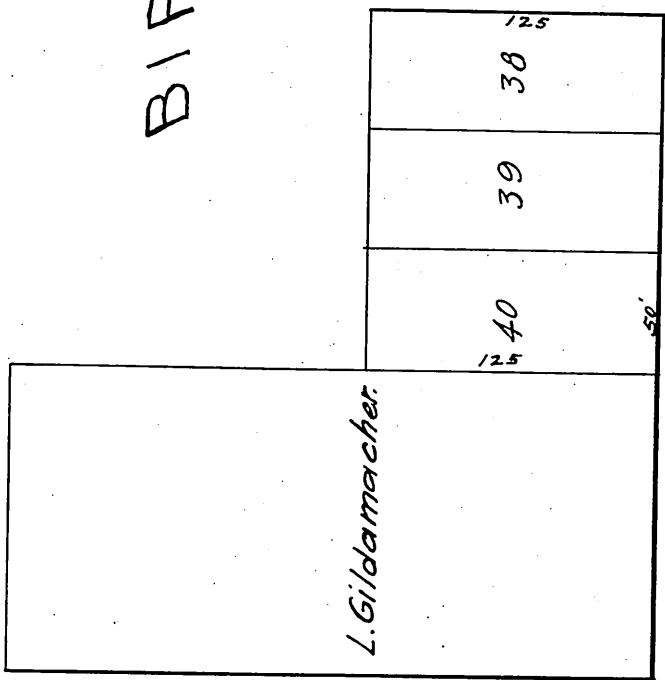
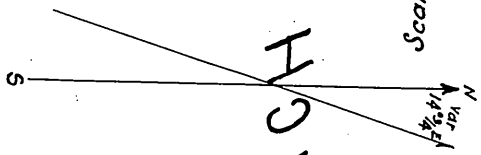


MAP OF THE BIRCH ADDITION TO SANTA ANA

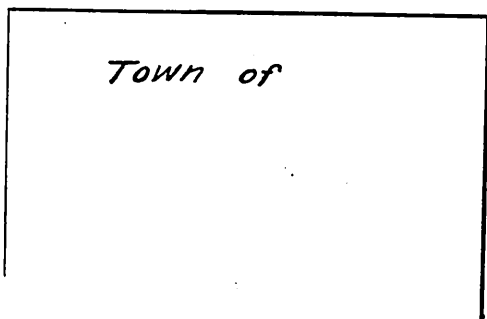
Surveyed Jan 26 AD 1876

by T. J. Ellis Surveyor.

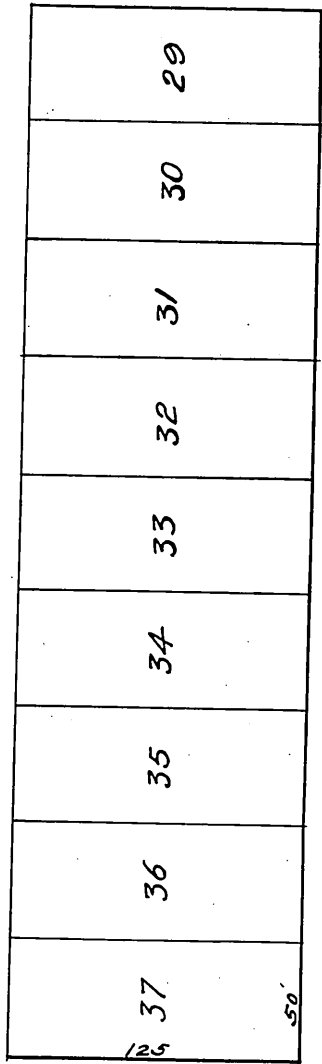
Scale 40' to 1 inch



WEST



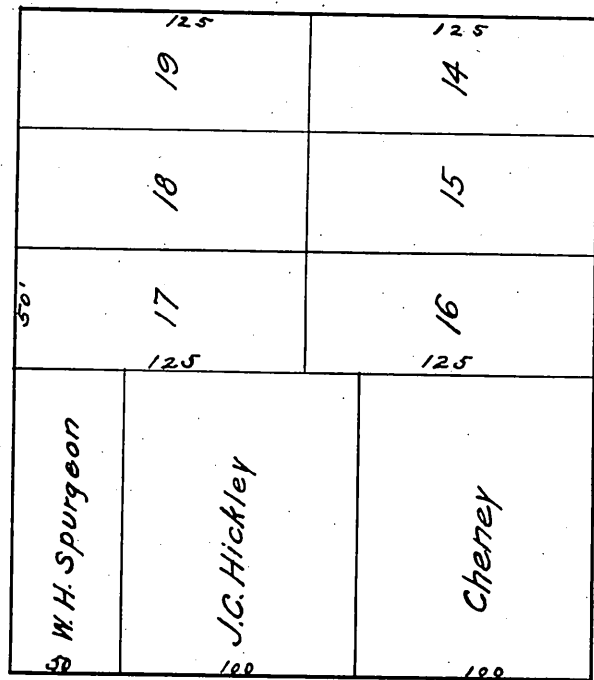
Town of



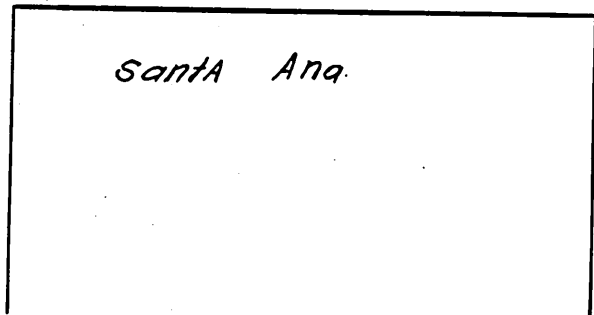
BIRCH

FOURTH

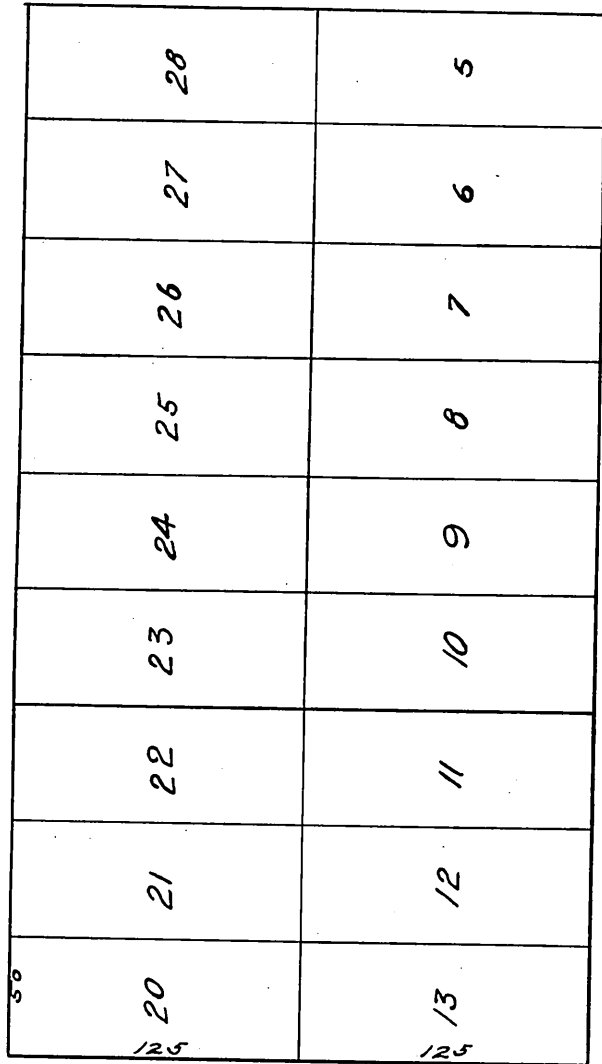
ST. 80 FT



ST.



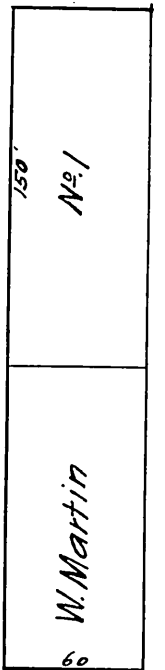
Santa Ana.



ST 60 FT

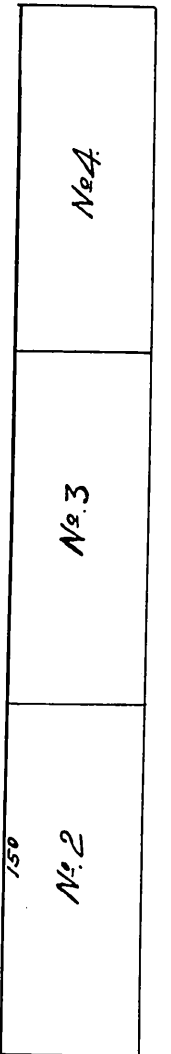
FIFTH

ST 60 FT



W. Martin

No. 1



No. 2

No. 3

No. 4

Recorded Jan. 28 1876 at 1:30 P.M. at request of C. W. Humphreys.

Comp'd [Signature]

A. C. N.