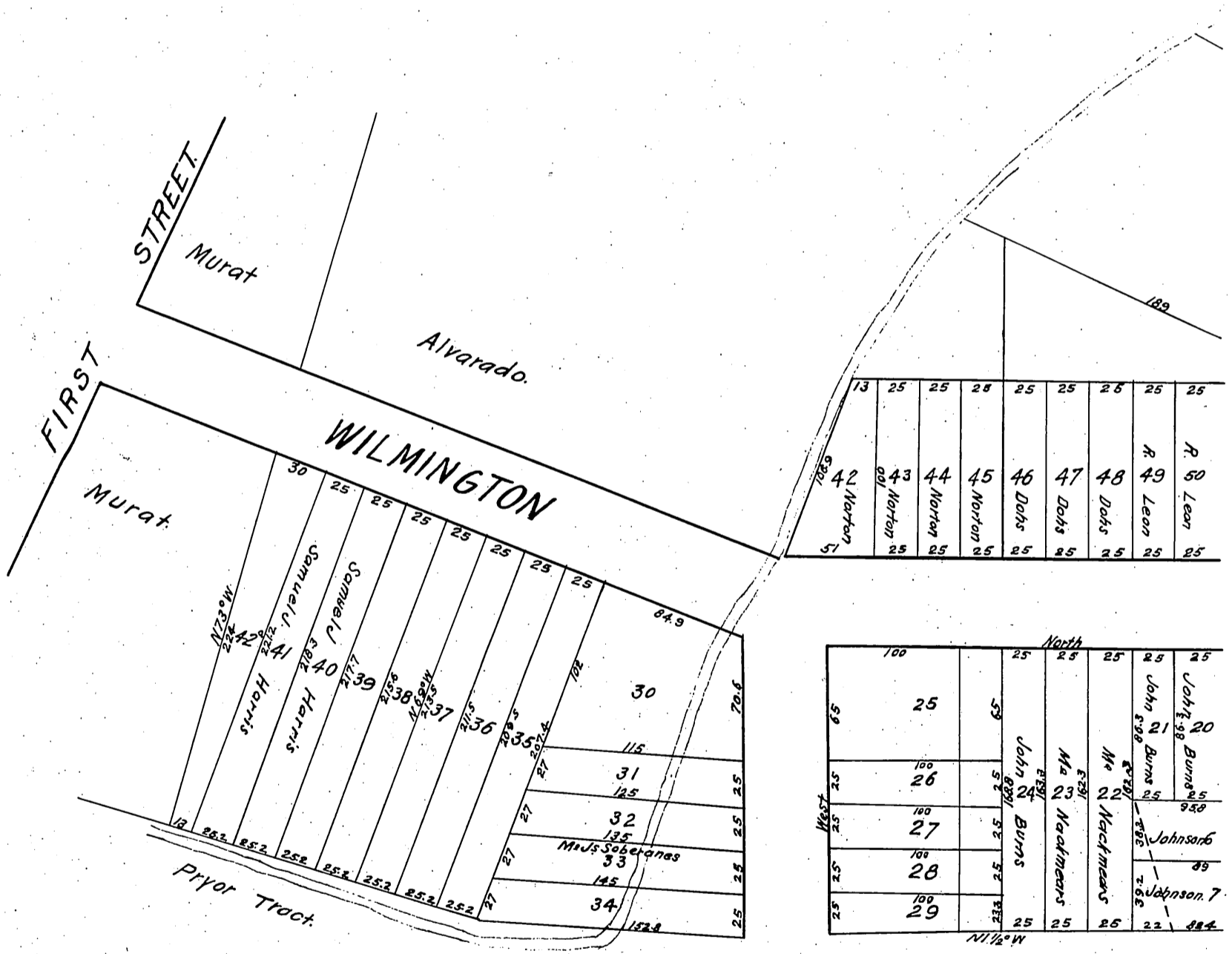


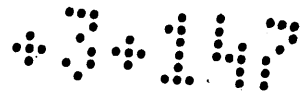
For copy of this map  
See M.R. 32-73

*Subdivision*  
of property of Don Manuel Requena Surveyed  
by Moore and Kelleher Scale 40ft to one inch

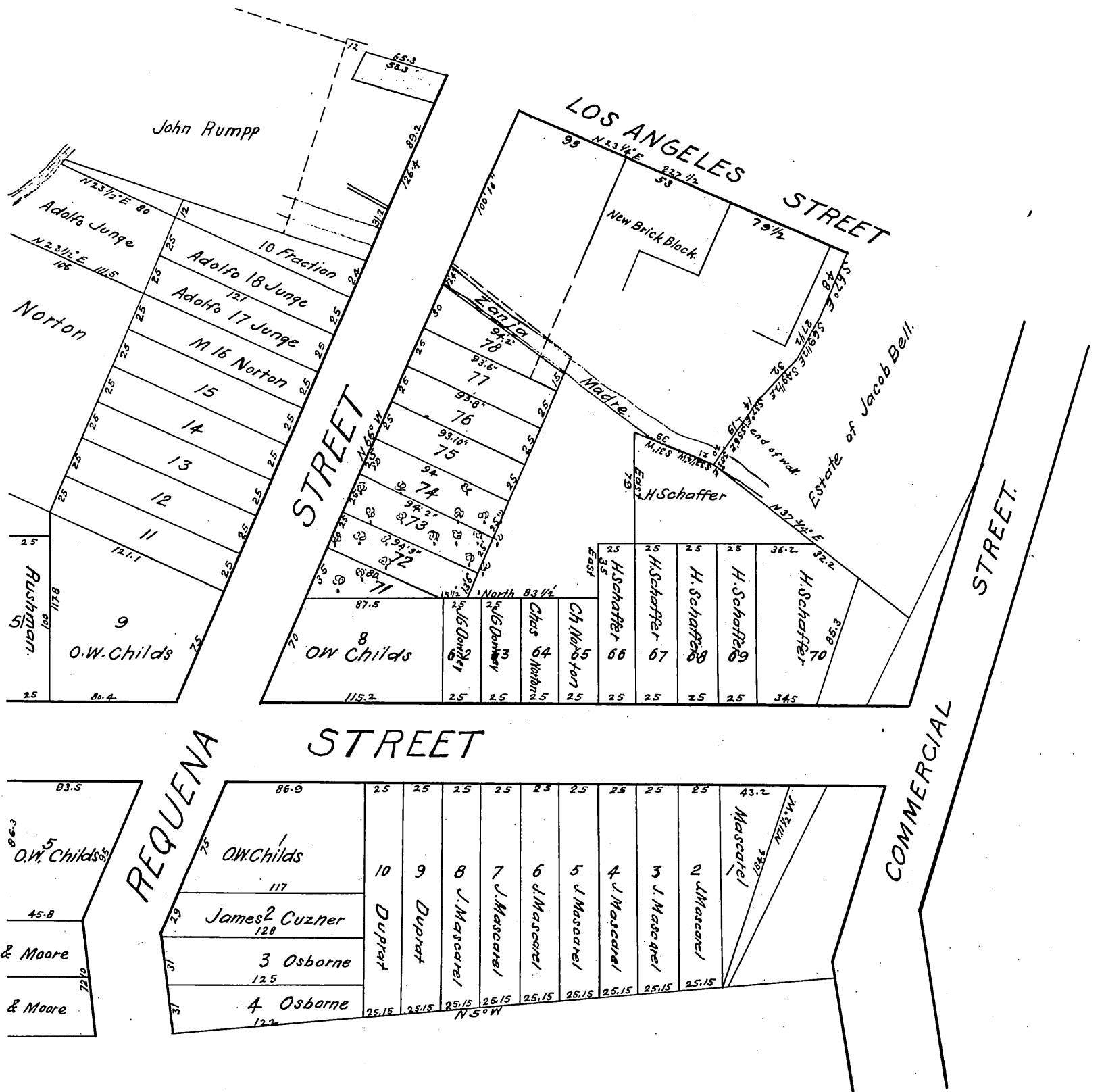


Opening San Pedro St D: 3924-264 D: 11-263 C.F. 464  
 Per lots 36+37 quitclaimed by L.A. City D: 40-235 O.R. 4842-326  
 Lot 17+18 + land in rear of 17+18 decided by City of L.A. D: 40-244 O.R. 3946-3

Copy of 1933



For copy of this map  
See M.R. 32-74



Recorded Feb 11 1876 at 5<sup>00</sup> P.M.  
at request of Manuel Requena

Handwritten initials or marks in the bottom left corner.