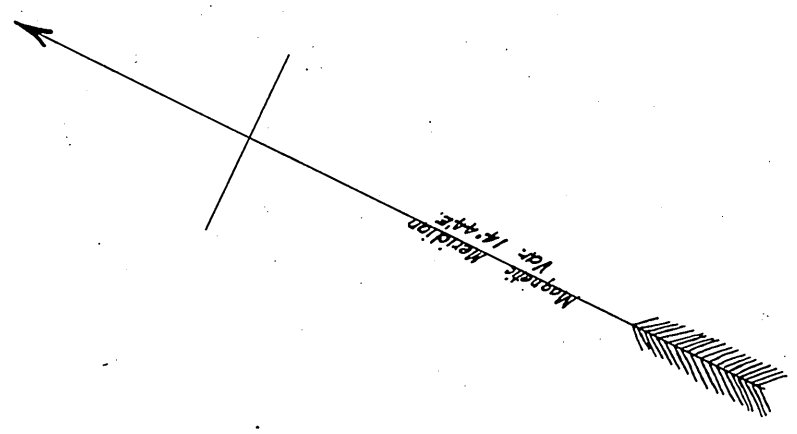


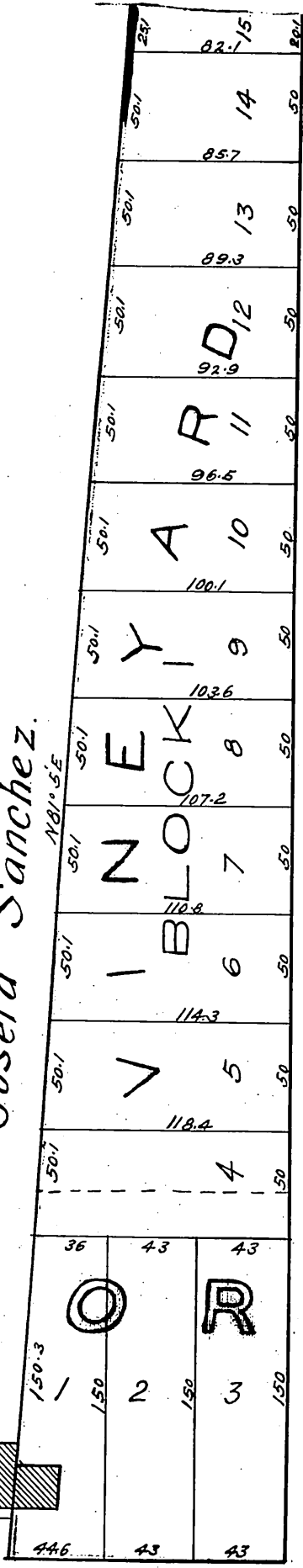
For copy of this map
See M. R. 32-75



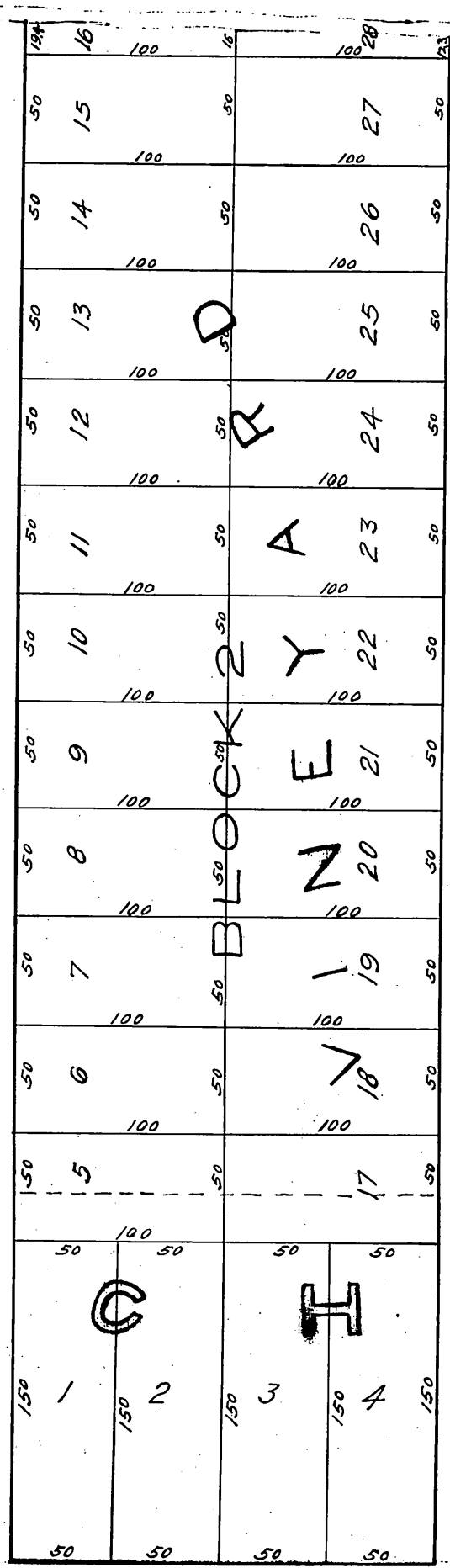
E. Meyer.

Lafayette Street

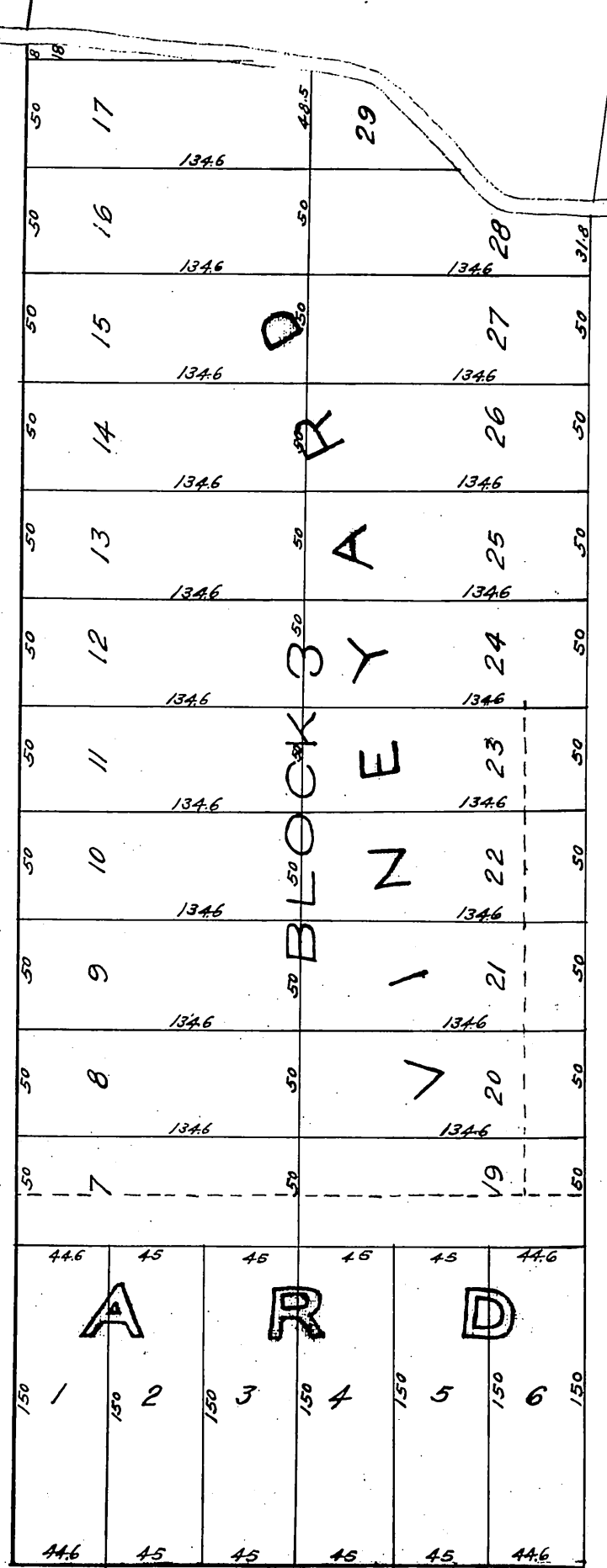
Josefa Sanchez.



Sepulveda Street



Turner Street



Alameda Street.

RAIL ROAD TRACK

Copyright
1913

3
18

For copy of this map
See M. R. 32-76

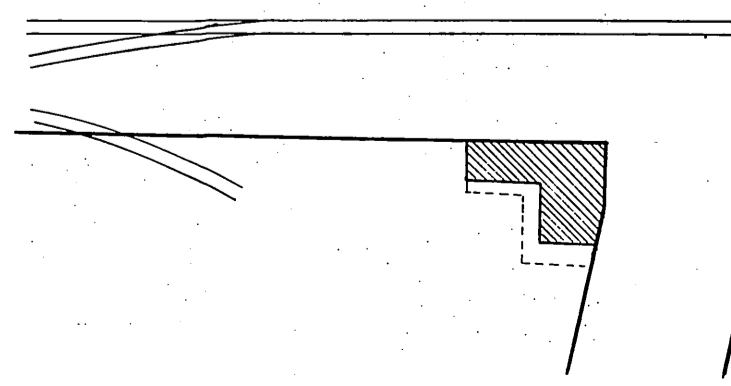
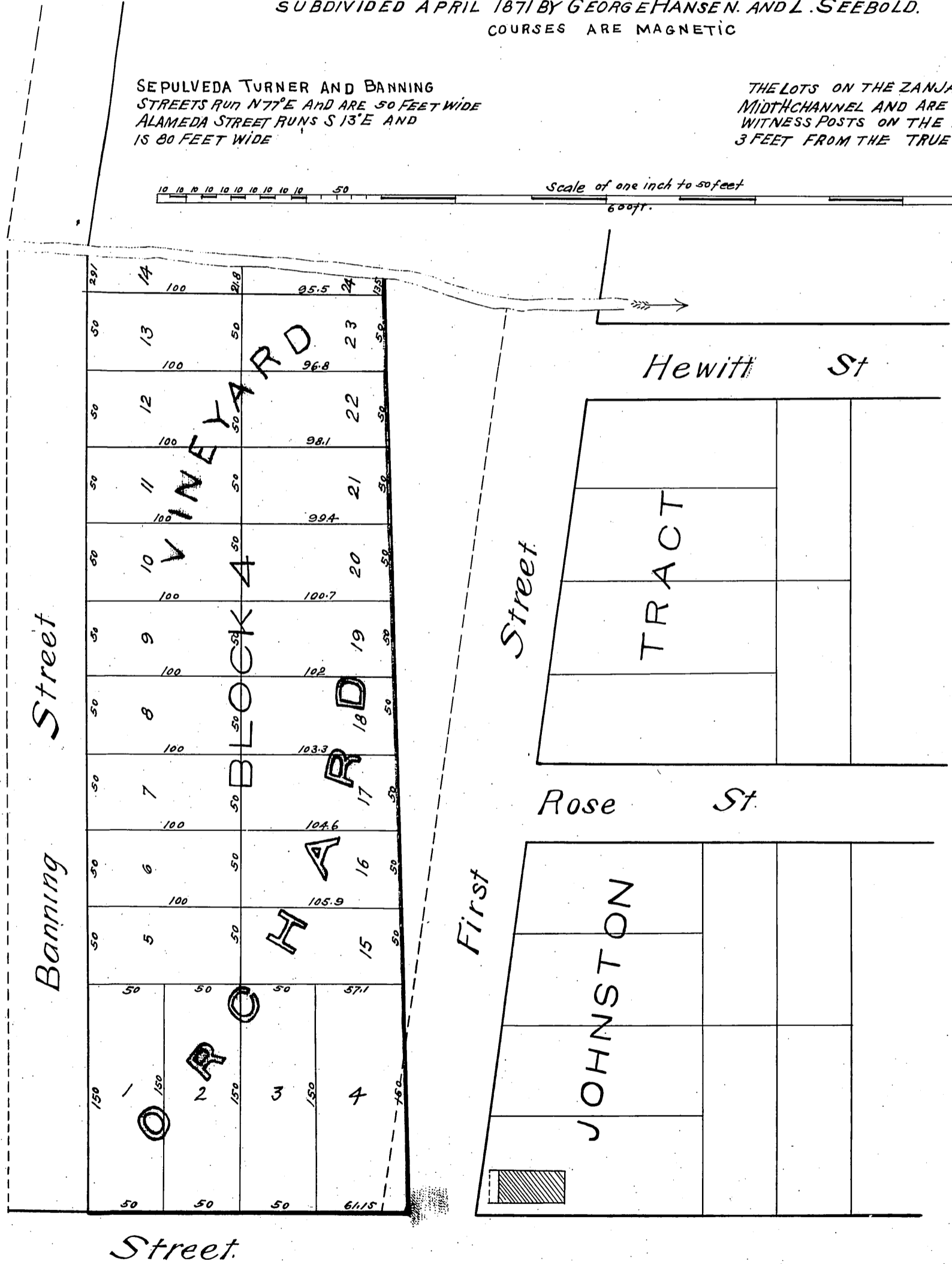
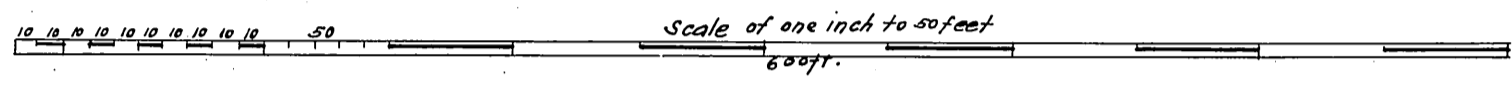
MAP OF THE SANCHEZ TRACT

SITUATE NEAR THE
RAILROAD DEPOT IN THE
CITY AND COUNTY OF LOS ANGELES CAL.

SUBDIVIDED APRIL 1871 BY GEORGE HANSEN AND L. SEEBOLD.
COURSES ARE MAGNETIC

SEPULVEDA TURNER AND BANNING
STREETS RUN N 77° E AND ARE 50 FEET WIDE
ALAMEDA STREET RUNS S 13° E AND
IS 80 FEET WIDE

THE LOTS ON THE ZANJA EXTEND TO ITS
MID CHANNEL AND ARE MARKED BY
WITNESS POSTS ON THE RIGHT BANK
3 FEET FROM THE TRUE CORNERS.



Recorded Feb. 23 1876 at 4⁰⁰ P.M.
at request of S.I. Hubbell et al.

Comp'd
29/7