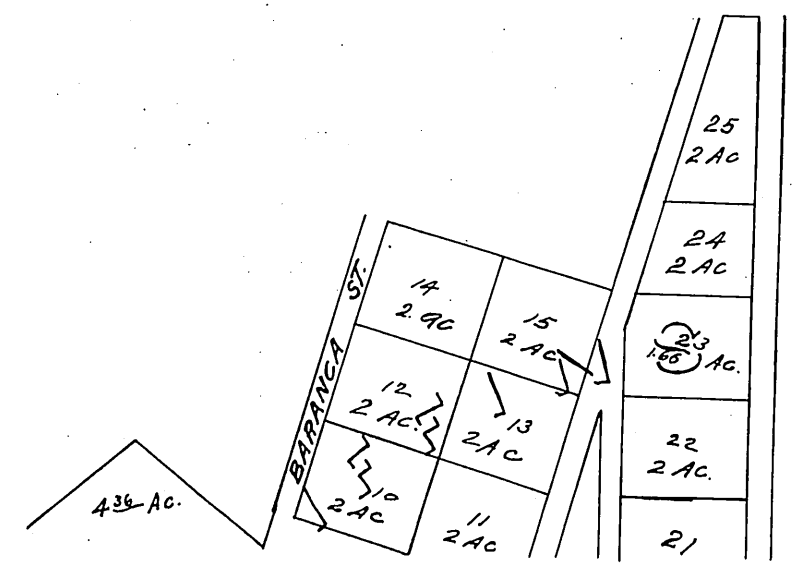


For copy of this map
See M.R. 32-77

RECORD MAP
OF

EAST LOS ANGELES
PROPERTY
OF

JOHN S. GRIFFIN JOHN G. DOWNEY AND HANCOCK M. JOHNSTON:
Surveyed and Subdivided in Dec. 1873 by
Frank Lecouvreur Co. Surv.
and in
January 1873 by *Moore & Kelleher.*



3275

