

MR 3004

MAP

OF THOSE PARTS OF THE RANCHO

LA BALLONA

IN
LOS ANGELES COUNTY CALIFORNIA

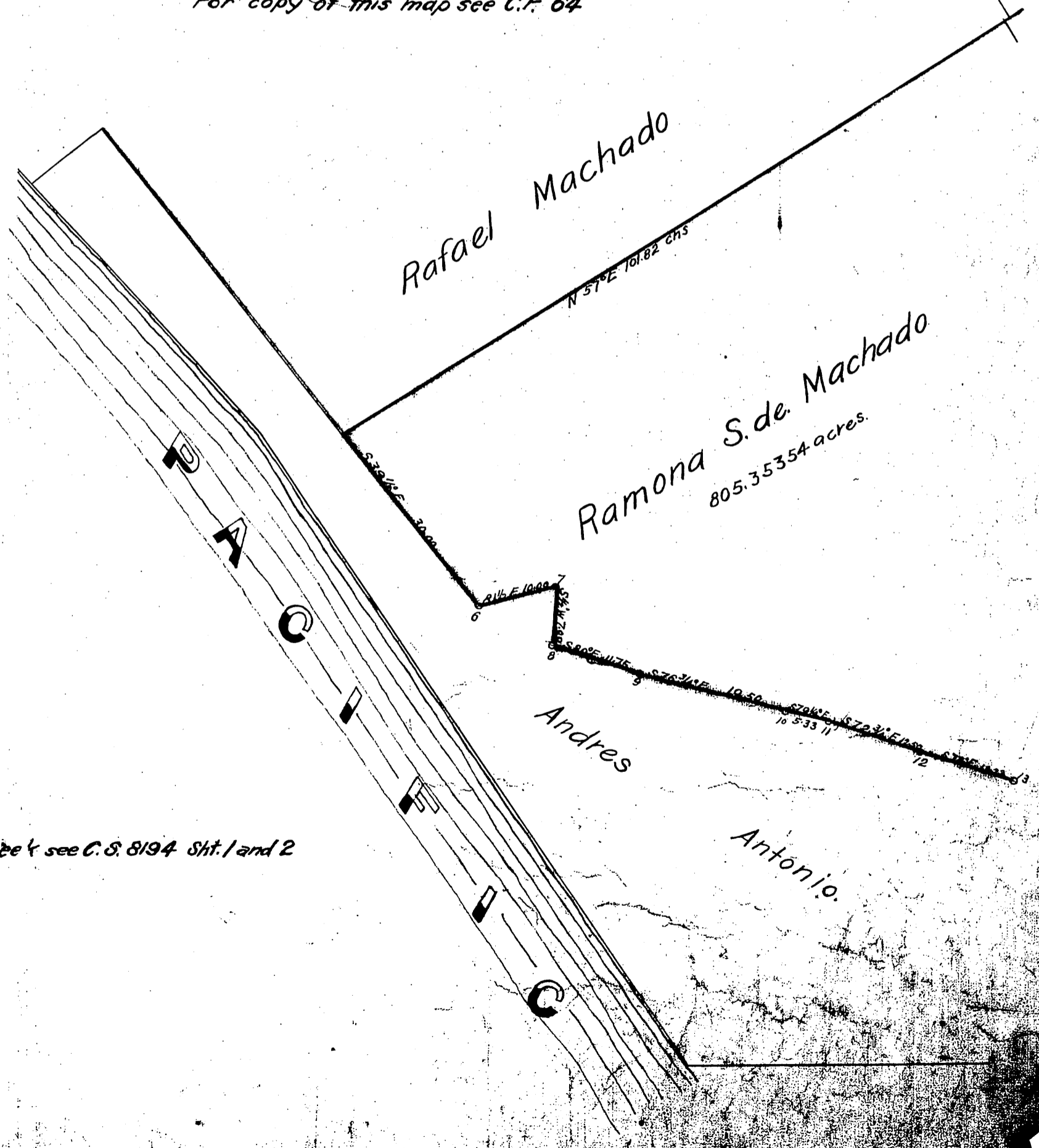
which in the suit of John D Young et.al. vs. Ygnacio Machado etal No 965 of the register of actions were allotted to the Heirs of Augustina Machado decd. by Decree of the District Court of the 1st Judicial District Cal of 14 December 1868

showing

the partition of said lands made in the suit of Ramona S. de Machado vs Domingo Machado et.al. in the District Court of the 17 Judicial District California by Geo. Hansen sole referee of partition appointed by the decree of said District Court of October 11th 1875.

SCALE OF ONE INCH TO 10 CHS TRUE COURSES VAR 14°30'E ASSISTANT SURVEYOR AND DRAUGHTSMAN ALFRED SOLANO

For copy of this map see C.F. 64



For Ball n Cree k see C.S. 8194 Sht. 1 and 2

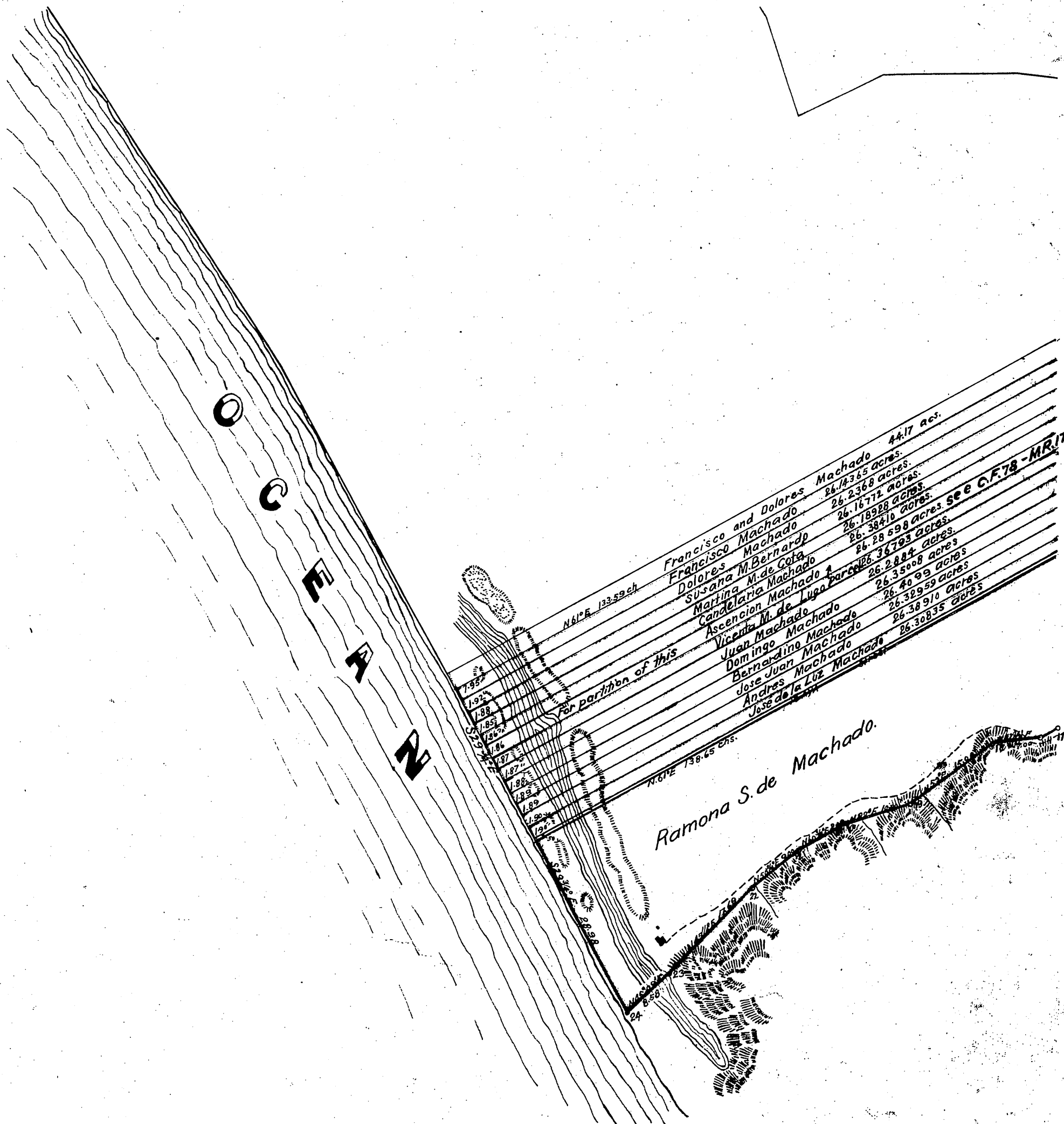
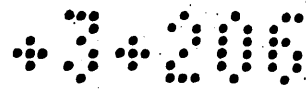
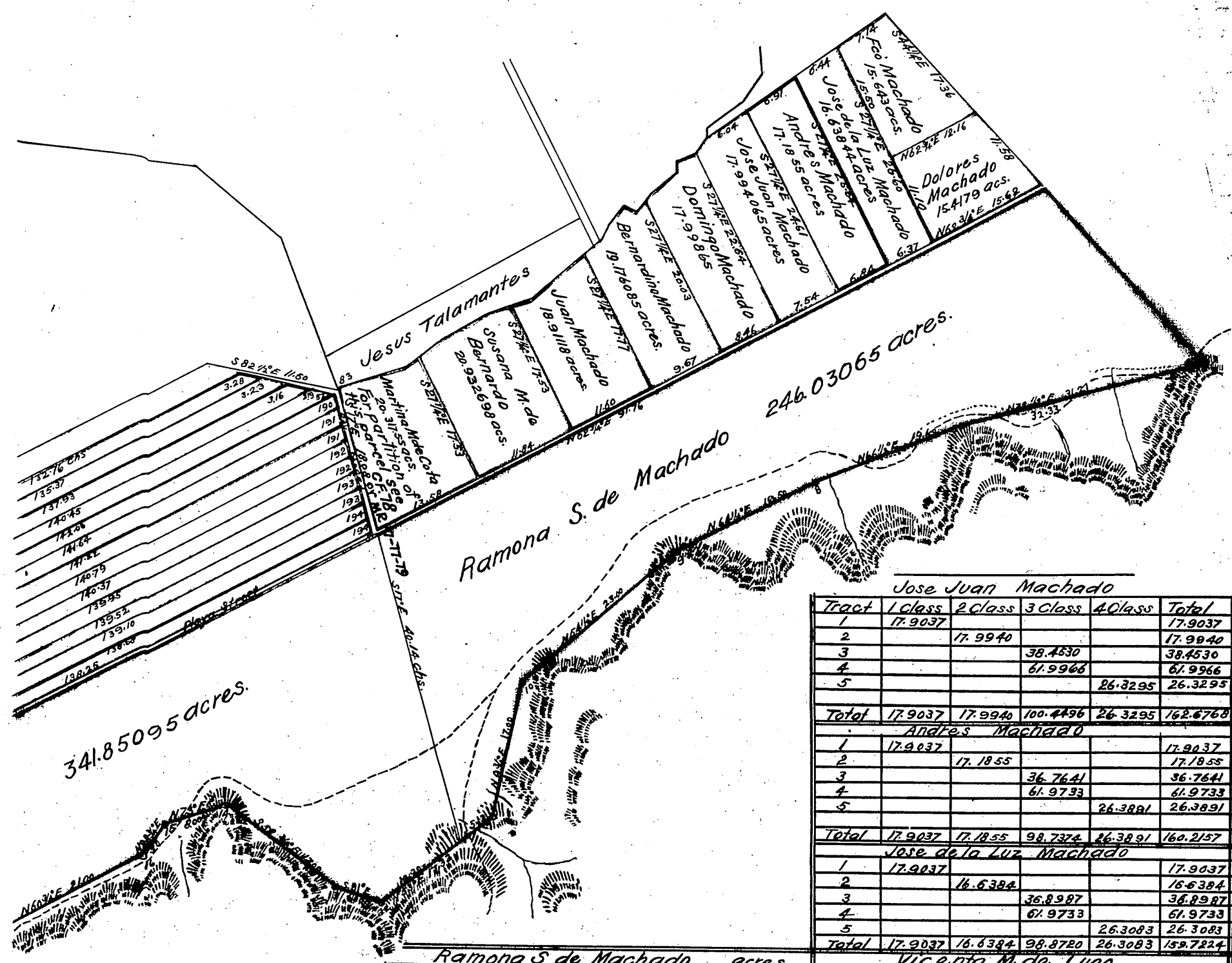
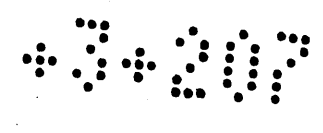


Table of Partition

	Interest	1st Class	2nd Class	3rd Class	4th Class	Total
Ramona S. de Machado	1/2	230.6910	246.0306	1271.8881	341.8509	2090.4606
Domingo Machado	1/26	17.9617	17.9986	100.6755	26.3500	162.9858
Dolores Machado	1/26	17.9466	17.4479	98.4981	26.2368	158.0994
Bernardino Machado	1/26	18.0905	19.1760	103.1282	26.4099	166.8047
Francisco Machado	1/26	17.0868	15.5643	98.0573	26.1436	156.8520
Juan Machado	1/26	17.1983	18.9111	99.2544	26.2884	161.6522
Jose Juan Machado	1/26	17.9037	17.9942	100.4496	26.3295	162.6768
Andres Machado	1/26	17.9037	17.1855	98.7374	26.3891	160.2157
Jose de la Luz Machado	1/26	17.9037	16.6384	98.8720	26.3083	159.7224
Vicente M. de Lugo	1/26	17.9470	21.2800	99.8869	26.3679	165.6818
Ascencion Machado	1/26	17.8334	21.4100	99.1070	26.2859	164.6363
Susana M. de Bernardo	1/26	17.9000	20.9326	98.7703	26.1677	163.7706
Candelaria Machado	1/26	17.8700	21.1530	97.8636	26.3841	163.2707
Martina M. de Cota	1/26	18.0246	20.3175	99.7932	26.1892	164.3245
Roads & Streets		5.4680	4.6340	18.3320	8.4100	36.8530
Total acres		467.7290	494.6435	2582.5147	692.1193	4237.0065

Comp'd
1917



Jose Juan Machado					
Tract	1 Class	2 Class	3 Class	4 Class	Total
1	17.9037				17.9037
2		17.9940			17.9940
3			38.4530		38.4530
4			61.9966		61.9966
5				26.3295	26.3295
Total	17.9037	17.9940	100.4496	26.3295	162.6768

Andres Machado					
Tract	1 Class	2 Class	3 Class	4 Class	Total
1	17.9037				17.9037
2		17.1855			17.1855
3			36.7641		36.7641
4			61.9733		61.9733
5				26.3891	26.3891
Total	17.9037	17.1855	98.7374	26.3891	160.2157

Jose de la Luz Machado					
Tract	1 Class	2 Class	3 Class	4 Class	Total
1	17.9037				17.9037
2		16.6384			16.6384
3			36.8987		36.8987
4			61.9733		61.9733
5				26.3083	26.3083
Total	17.9037	16.6384	98.8720	26.3083	159.7224

Ramona S de Machado acres					
Tract	1 class	2 class	3 Class	4 class	Total
1	7.4360				7.4360
2			15.5712		15.5712
3	47.3600		21.5200		68.8800
4	7.0907				7.0907
5	86.9555				86.9555
6	81.8488		12.1132		93.9620
7		246.0306			246.0306
8				341.8509	341.8509
9			417.3302		417.3302
10			805.3535		805.3535
Total	230.6910	246.0306	1271.8881	341.8509	2090.4606

Vicenta M de Lujo					
Tract	1 Class	2 Class	3 Class	4 Class	Total
1	17.9470				17.9470
2		21.2800			21.2800
3			37.1263		37.1263
4			61.9606		61.9606
5				26.3679	26.3679
Total	17.9470	21.2800	99.0869	26.3679	164.6818

Ascencion Machado					
Tract	1 Class	2 Class	3 Class	4 Class	Total
1	17.8334			5.7758	23.6092
2		21.4100			21.4100
3			31.5967		31.5967
4			61.7345		61.7345
5				26.2859	26.2859
Total	17.8334	21.4100	99.1070	26.2859	164.6363

Domingo Machado					
Tract	1 Class	2 Class	3 Class	4 Class	Total
1	17.9617				17.9617
2		17.9986			17.9986
3			38.6862		38.6862
4			61.9893		61.9893
5				26.3500	26.3500
Total	17.9617	17.9986	100.6755	26.3500	162.9858

Susana M de Bernardo					
Tract	1 Class	2 Class	3 Class	4 Class	Total
1	16.6929			7.0900	23.7829
2		20.9326			20.9326
3			1.2071	29.6837	30.8908
4				61.9966	61.9966
5				26.1677	26.1677
Total	17.9000	20.9326	98.7703	26.1677	163.7706

Dolores Machado					
Tract	1 Class	2 Class	3 Class	4 Class	Total
1	17.9466				17.9466
2		15.4179			15.4179
3			37.3198		37.3198
4			61.1783		61.1783
5				26.2368	26.2368
Total	17.9466	15.4179	98.4981	26.2368	158.0994

Candelaria Machado					
Tract	1 Class	2 Class	3 Class	4 Class	Total
1	17.8700			3.9700	21.8400
2		21.1530			21.1530
3			32.9556		32.9556
4			60.9380		60.9380
5				26.3841	26.3841
Total	17.8700	21.1530	97.8636	26.3841	163.2707

Bernardino Machado					
Tract	1 Class	2 Class	3 Class	4 Class	Total
1	18.0905				18.0905
2		19.1760			19.1760
3			41.1390		41.1390
4			61.9893		61.9893
5				26.4099	26.4099
Total	18.0905	19.1760	103.1283	26.4099	166.8047

Martina M de Gota					
Tract	1 Class	2 Class	3 Class	4 Class	Total
1	18.0246				18.0246
2		20.3175			20.3175
3			37.8039		37.8039
4			61.9893		61.9893
5				26.1892	26.1892
Total	18.0246	20.3175	99.7932	26.1892	164.3245

Francisco Machado					
Tract	1 Class	2 Class	3 Class	4 Class	Total
1	17.0868				17.0868
2		15.5643			15.5643
3			37.4972		37.4972
4			60.5601		60.5601
5				26.1436	26.1436
Total	17.0868	15.5643	99.0573	26.1436	158.8520

Rozas y Streets					
Tract	1 Class	2 Class	3 Class	4 Class	Total
1				1.5240	1.5240
2				4.4090	4.4090
3			3.2030		3.2030
4				4.9040	4.9040
5				2.2650	2.2650
6				4.6340	4.6340
7				2.7420	2.7420
8				4.9720	4.9720
Total	5.4680	4.6340	18.3330	17.2400	25.6750

Juan Machado					
Tract	1 Class	2 Class	3 Class	4 Class	Total
1	17.1983				17.1983
2		18.9111			18.9111
3			37.4886		37.4886
4			61.7658		61.7658
5				26.2884	26.2884
Total	17.1983	18.9111	99.2544	26.2884	161.6522

Compl
0/2/7



For Port Road and por Playa St. changed
to Centinela Ave. D. 13-159 R. B. 24-174

