

MAP

of Block 35 1/2, being an extension of Ord's Survey of the City of Los Angeles
Scale 30 feet to 1 inch

M. Kelleher, City Surveyor.

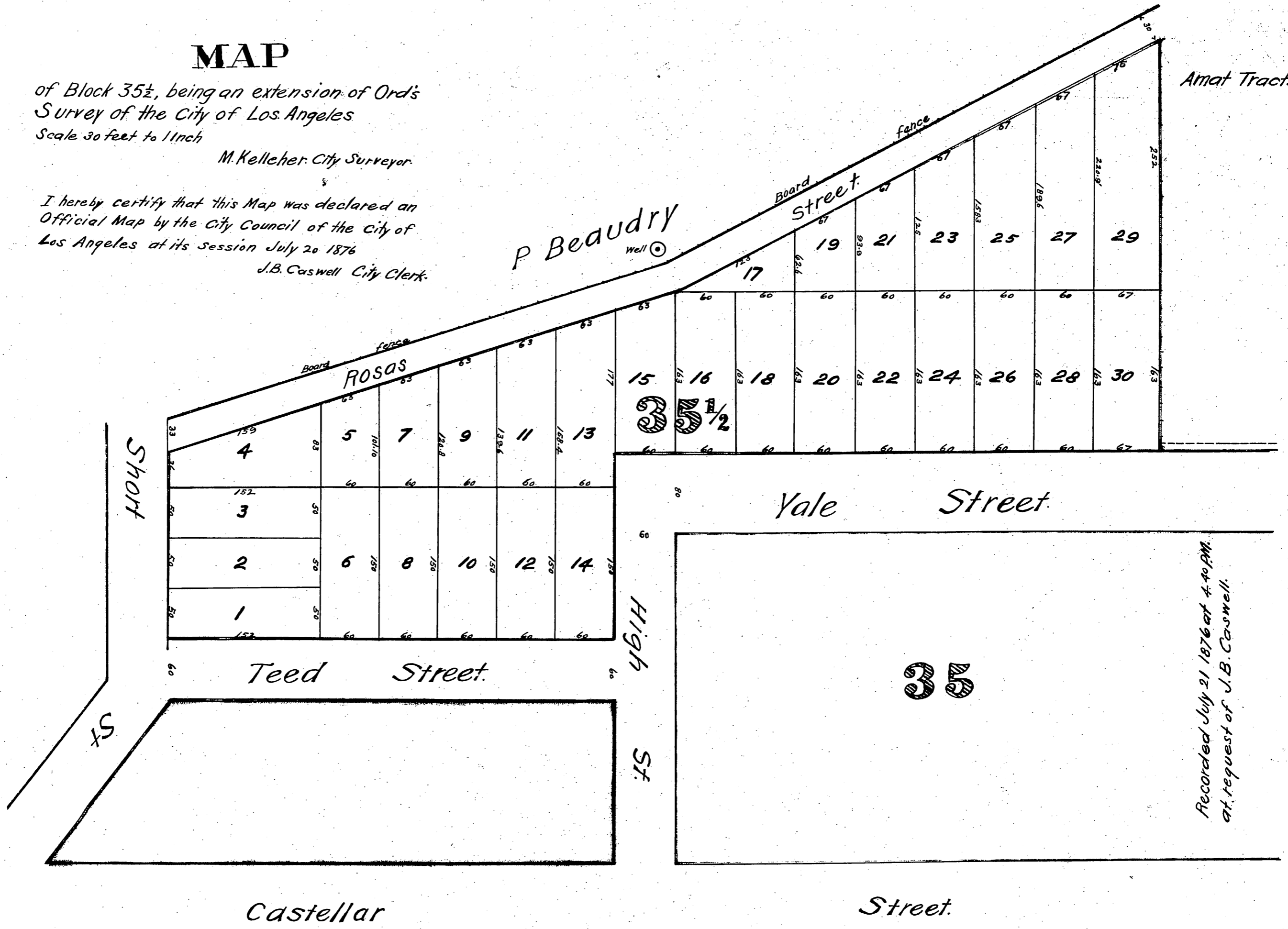
I hereby certify that this Map was declared an Official Map by the City Council of the City of Los Angeles at its session July 20 1876

J.B. Caswell, City Clerk.

Amat Tract.

P Beaudry Well

Lot 15 dedicated for St. Ord 12699



Recorded July 21 1876 at 4:40 PM.
at request of J.B. Caswell.

J.B. Caswell