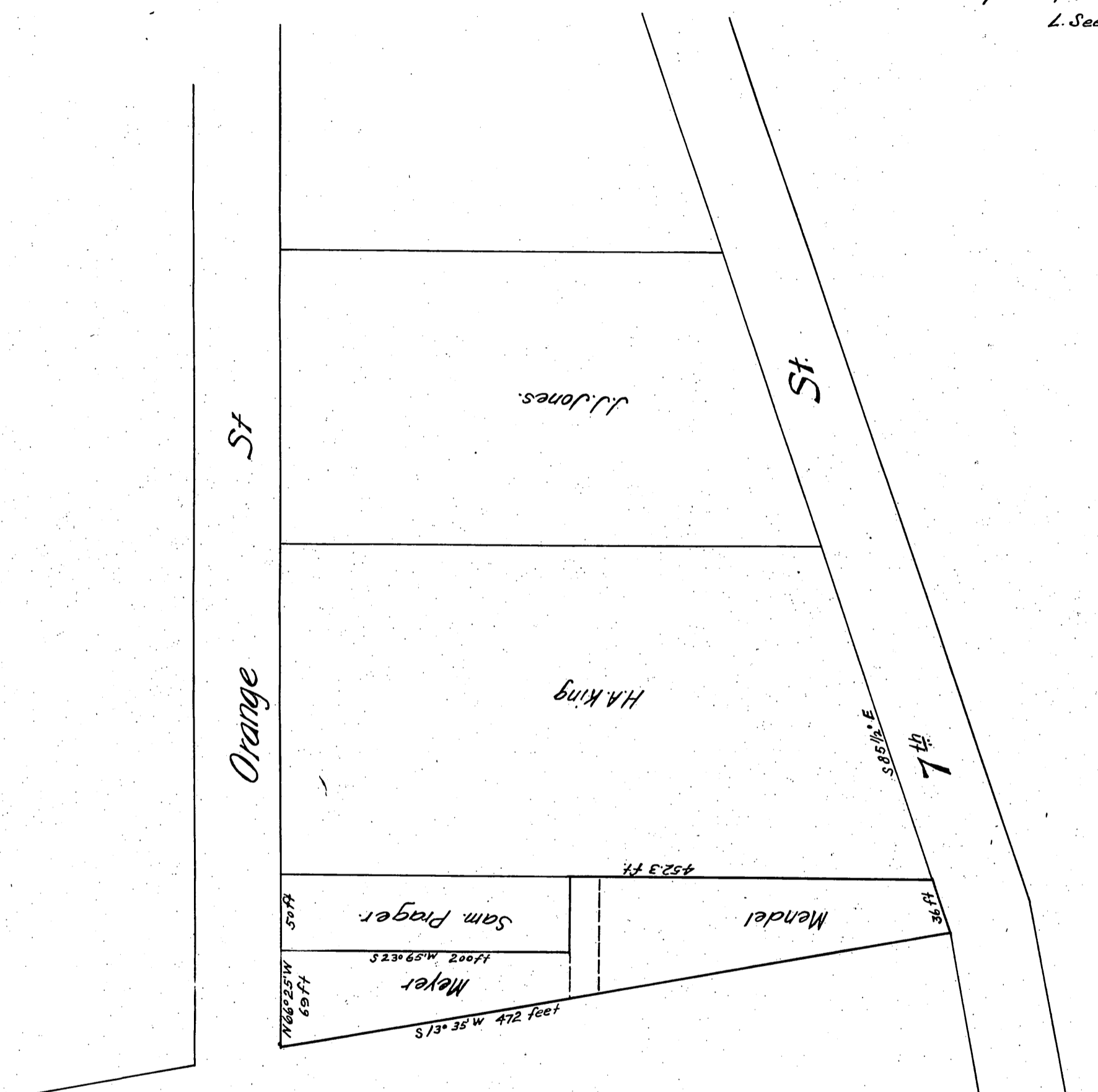




Courses are Magnetic  
Variation 14°45'E  
Scale of 1 inch to 80 feet  
Surveyed May 1 1872 by  
L. Seebold



Map referred to in deed from Lothar Seebold  
to Mendel Meyer. Dated May 2 1872  
Recorded in Book 45 page 186 of Deeds  
L. Seebold.

Recorded at request of Mendel Meyer  
Aug 15. 1876.

Comp'd  
pg 3

pg 4