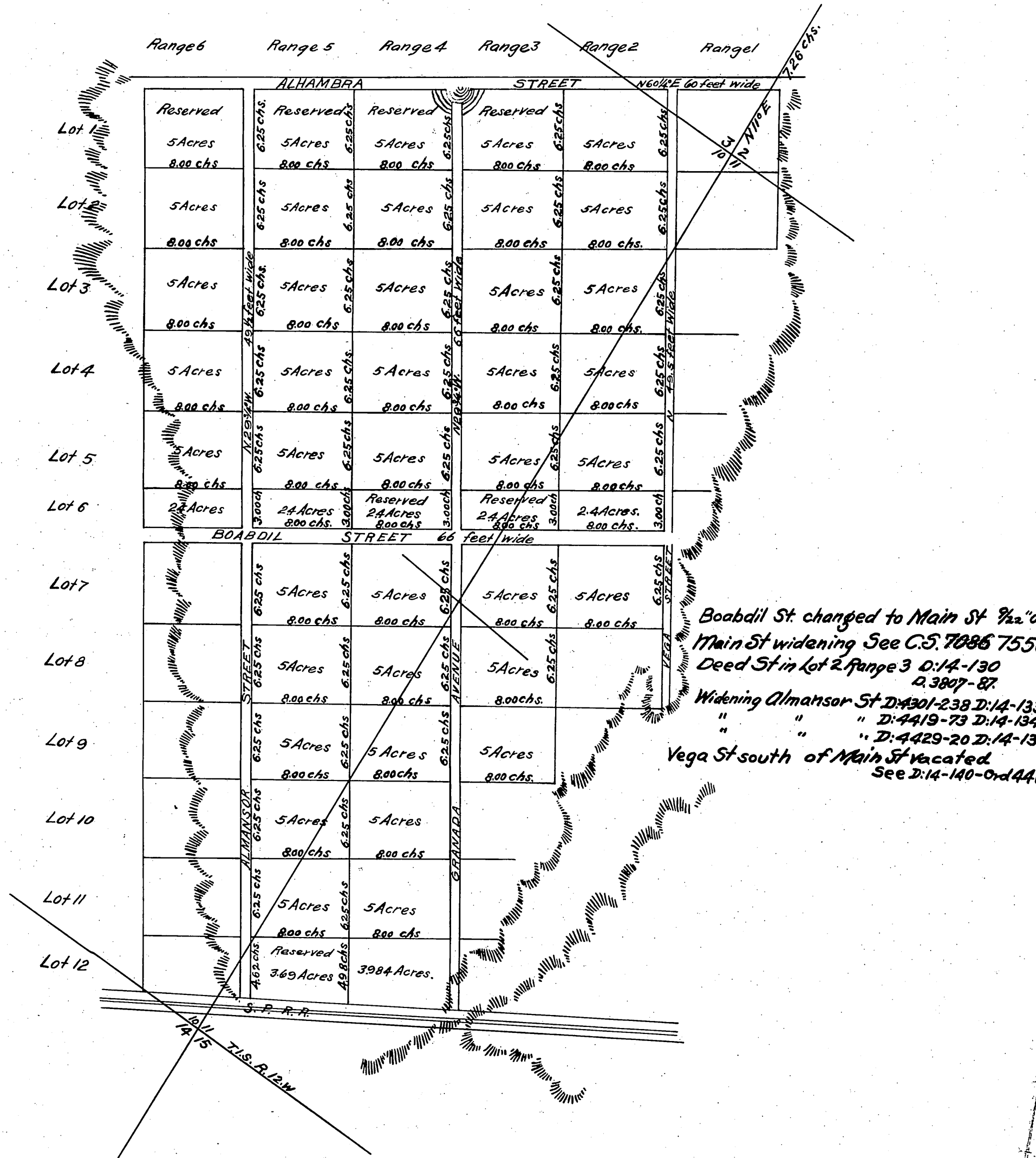


# Alhambra Tract

True Courses. Var. 14°45'E  
Surveyed June 1874- by G. Hansen.



Boabdil St changed to Main St 1/2" of  
Main St widening See C.S. 7086 7558  
Deed St in Lot 2 Range 3 O:14-130  
D. 3807-87.  
Widening Almansor St D:4301-238 D:14-133  
" " " D:4419-73 D:14-134  
" " " D:4429-20 D:14-134  
Vega St south of Main St vacated  
See D:14-140-Ord 441

Por. in S.W. 1/4 S.W. 1/4 of Sec. 11, T.15. R.12W., por. of lot 12 in Range 4, 5 & 6 D:25-241 D: 5735-61  
Por. Range 6 for confining water of Arroyo de San Pasqual D:36-256 O.R. 2656-332  
Por. lot 1 Rang. 6 For St. purp. D:38-150 O.R. 3062-87

Recorded at the request of J. de Barthe  
Shorb Sept. 1 1876 at 11:45 AM.

Comp. J. de Barthe