

# PLAT OF THE

## "YBARRA TRACT"

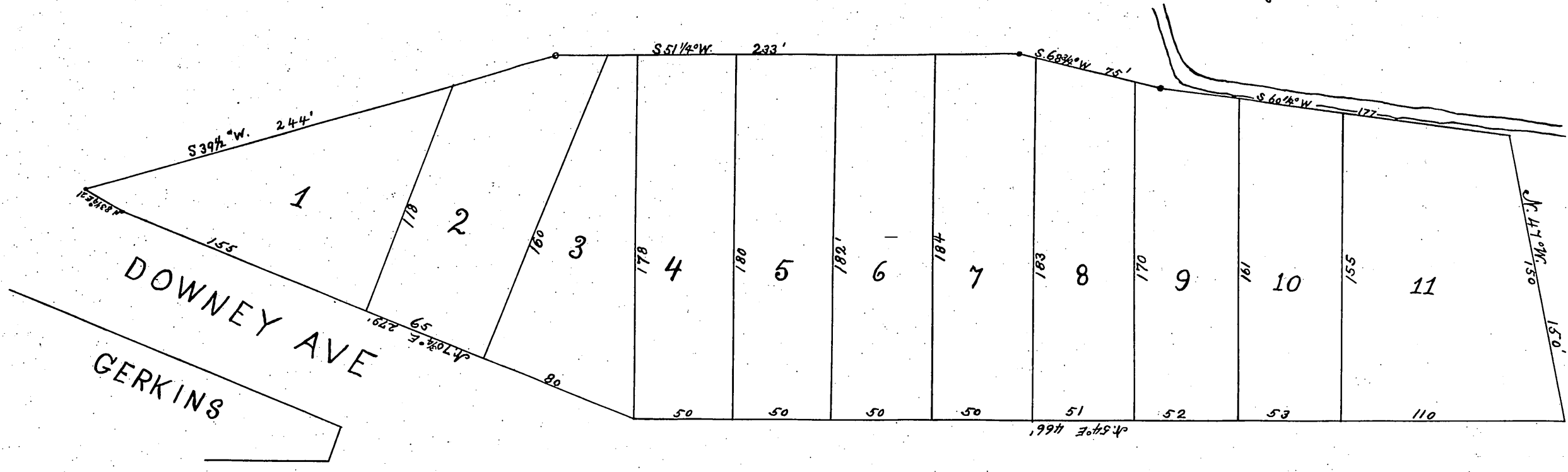
Surveyed Sept. 1876.

By M. Kelleher

City Surveyor

Scale 30 ft. per inch  
The above Map is Reduced to 1/2 its original size

*Description of the Ybarra Tract*  
Beginning at a point where the south line of San Fernando Street intersects the south line of Downey Avenue as confirmed by the County Court of Los Angeles County - and running thence North 70 1/2° East 279 feet to a point on the South line of Downey Avenue thence N 83 1/4° E 21 feet to a point on the South line of Downey Avenue thence S 39 1/2° W 244 feet to a point. Thence S 51 1/4° W 233 feet to a point. Thence S 68 3/4° W 75 feet to a point. Thence S 60 1/4° W 177 feet to a point in the line of an old Live fence thence N 41° W along the line of said Live fence 150 feet to a point on the South line of San Fernando St. Thence N 54° E along the South line of San Fernando Street 466 feet to the point of beginning.



SAN FERNANDO ST.

Downey Ave. changed to Olympia St. Ord. 482  
Olympia St. " " San Fernando St. Ord. 4093  
San Fernando St. changed to North Spring St. Ord. 36208

Recorded at request of L. Sotello  
Sept. 20 1876 at 10:25 AM.

Book 3

