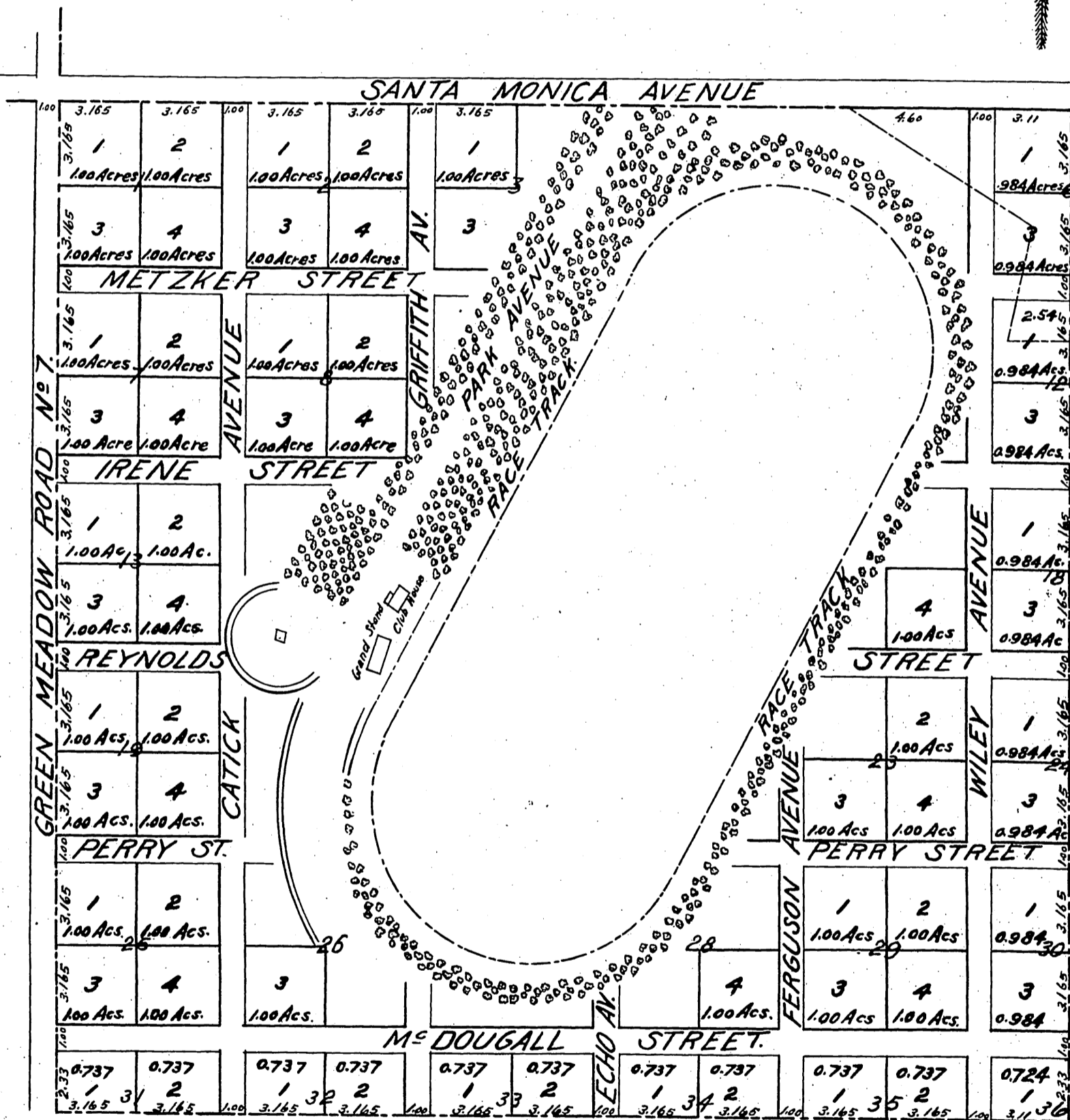


# SOUTHERN DISTRICT AGRICULTURAL PARK LOS ANGELES CALIFORNIA

True Meridian



Scale of 500 feet to 1 inch

Surveyed Dec. 20<sup>th</sup> by Hansen & Solano

Recorded at request of Southern Dist. Agricultural Association  
Jan 2 1877 at 10:50 AM

*Copy*

319