

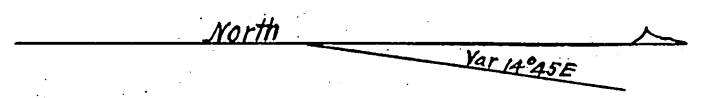
Compl'd
E.S.W.



PARK VILLA TRACT

Surveyed by E.S. Wright. January 5th 1877
Scale 3.75 chs. one inch

Recorded at request Thos H. Garey
Jan 17, 1877.

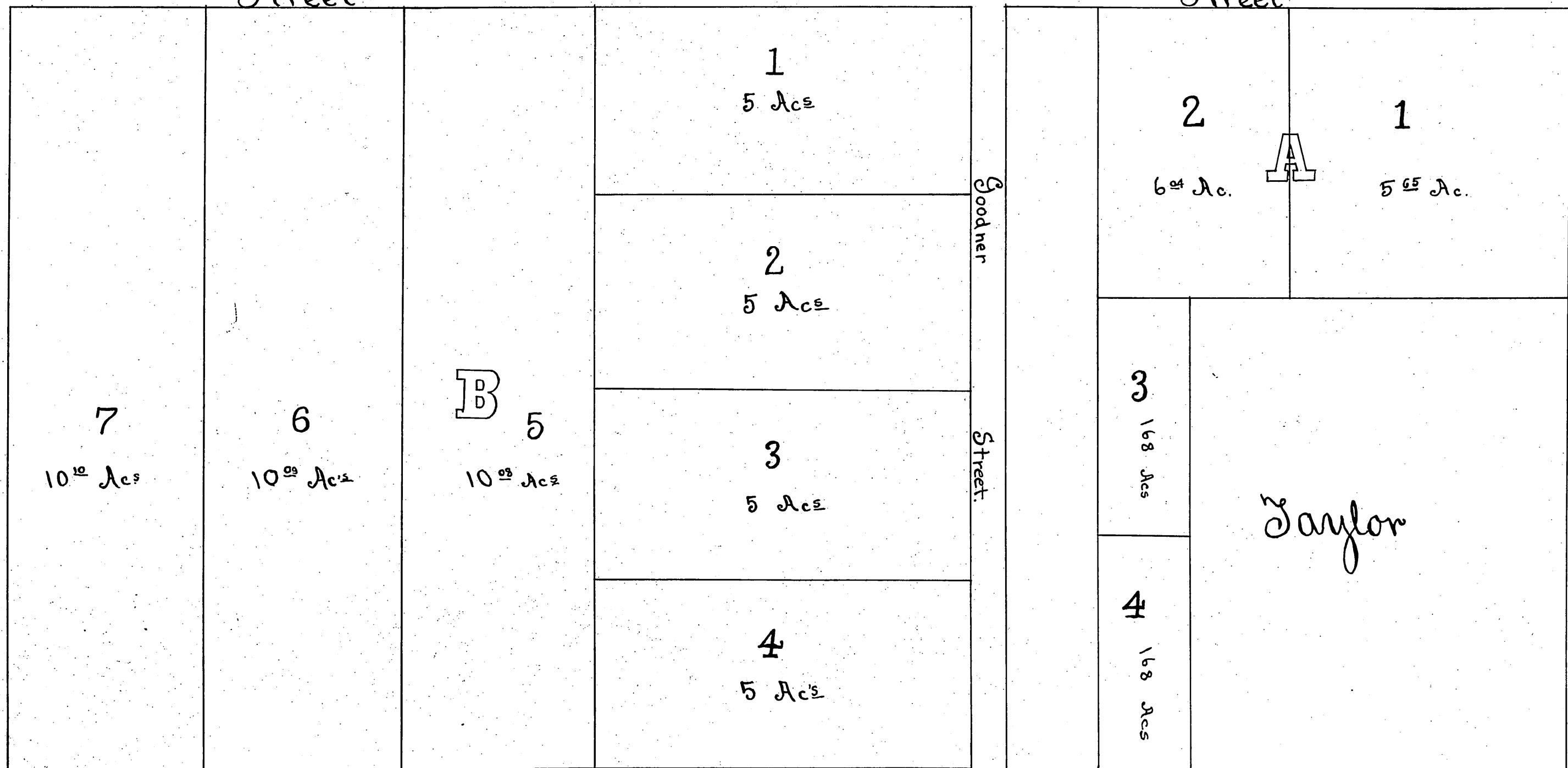


2 SEC 1
11 12
20 chains

Being part of E 1/2 of N W 1/4 of Section 12, T p. 2 S R. 14 W S. B. M.

Street

Street



Deed Halldale St D:11-48 D:9168-76 = 3251-67

