

MAP

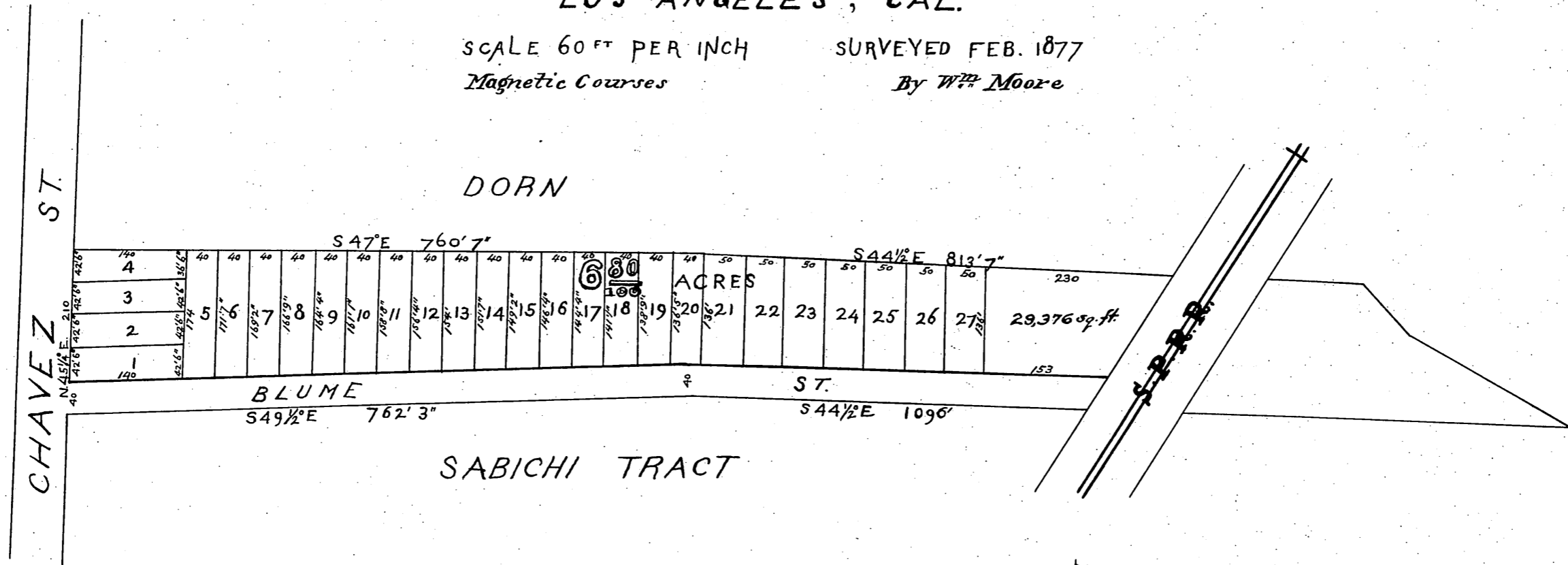
OF THE

HANCOCK TRACT

LOS ANGELES, CAL.

SCALE 60 FT PER INCH
Magnetic Courses

SURVEYED FEB. 1877
By W^m Moore



Recorded Feb. 21st 1877, at 1⁴⁰ P.M.
at request of H. L. Binford

Handwritten initials or signature