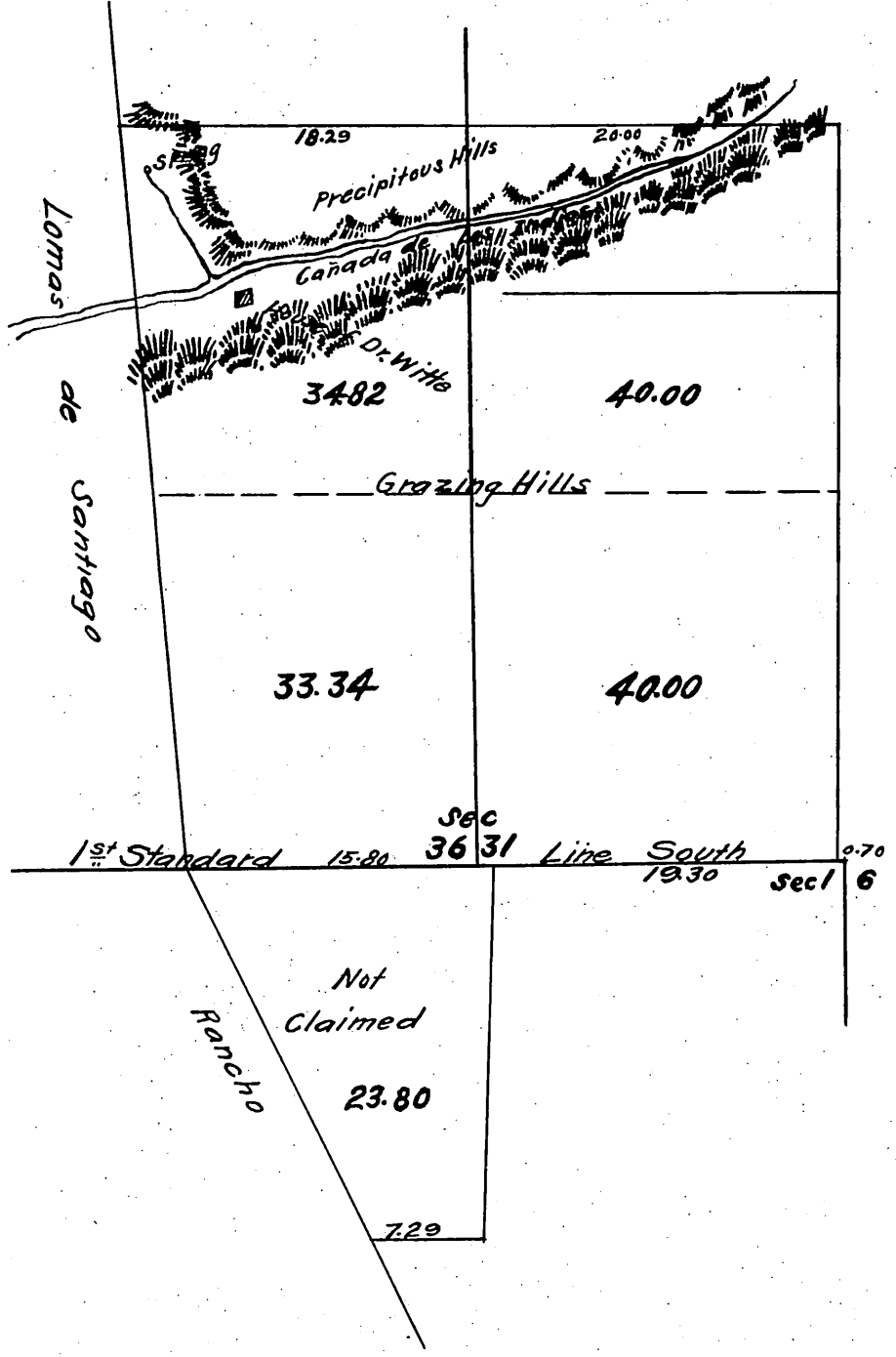


Possessory Claim of Dr. Aug. Witte  
 being frac. S.E. 1/4 of Sec. 36 T. 4 S. R. 8 W.  
 containing 68.16 Acres  
 West 1/2 of S.W. 1/4 of Sec 31 T. 4 S. R. 7 W.  
 Containing 80 Acres.  
 Frac. N.W. 1/4 of N.E. 1/4 Sec. 1 T. 5 S. R. 8 W.  
 Containing 23.80 Acres, Total 171.96 Acres.  
 Surveyed April, 23 1877.  
 Mag Var. 14 1/4° E San Bernardino B & M.  
 Scale 10 chs to 1 inch.  
 Geo E. Knox. Surveyor.



Recorded at request of Aug Witte  
 April 28 1877 at 10 17 AM.

Copy  
 1877

3  
 20