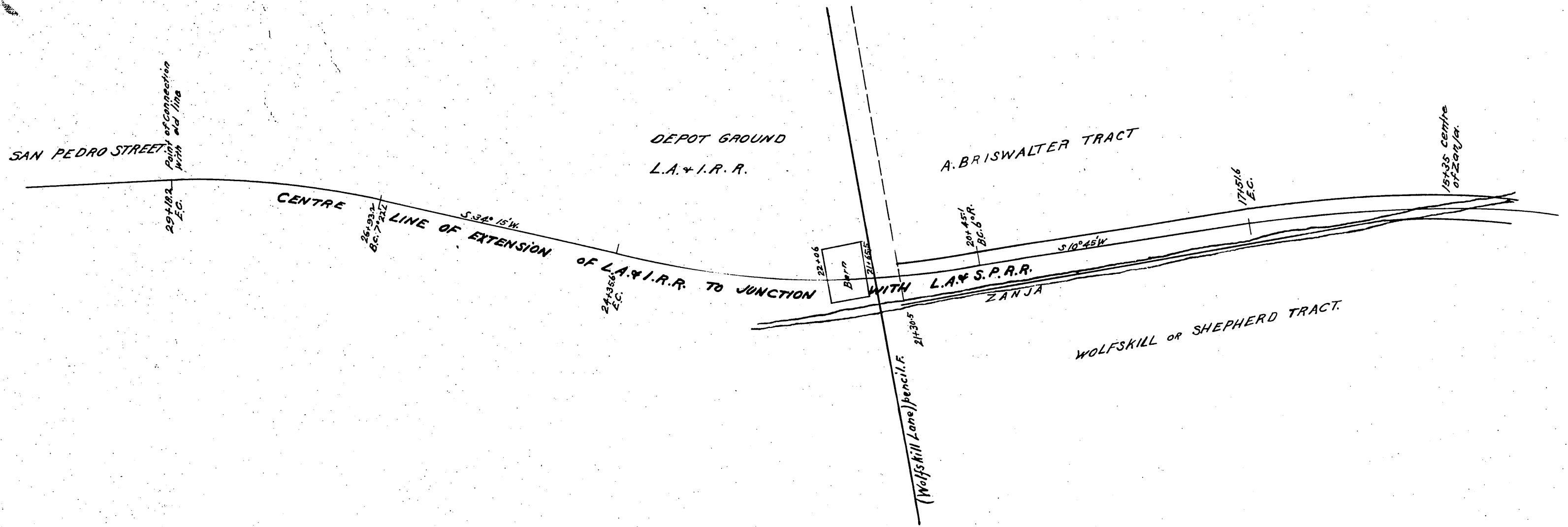


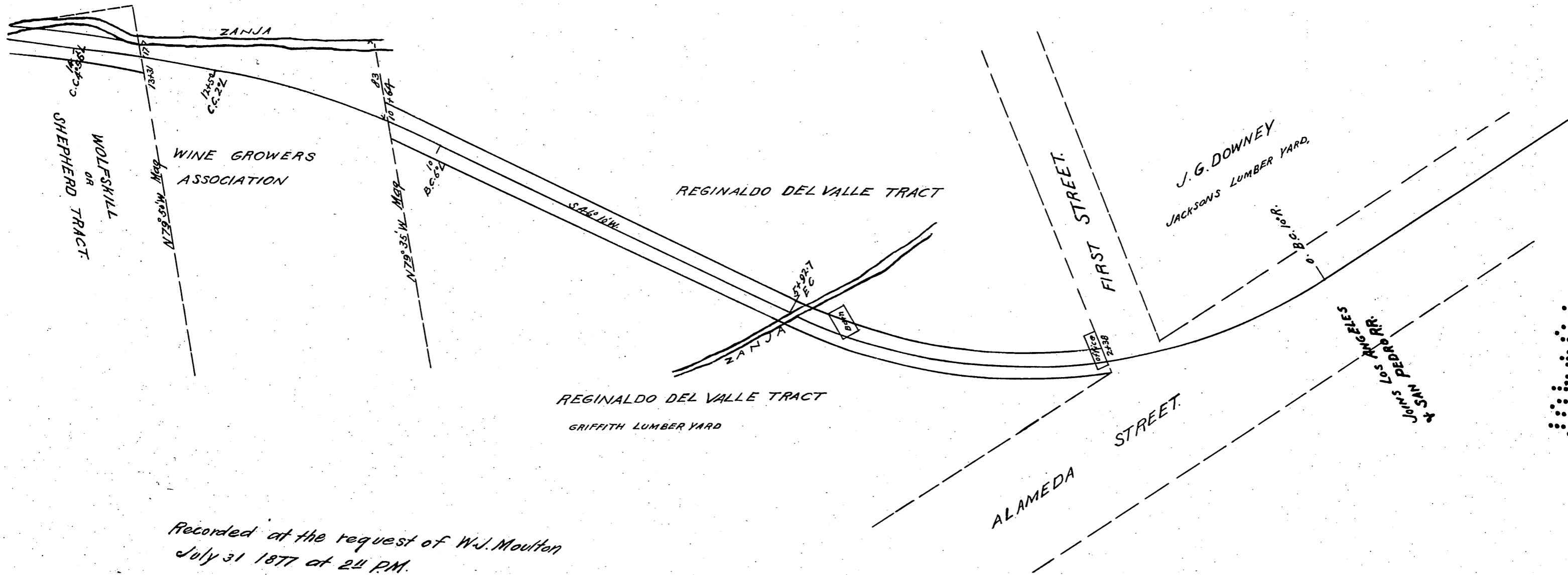
MAD
 OF THE
**EXTENSION OF THE
 LOS ANGELES + INDEPENDENCE RAIL ROAD
 to Junction with the
 LA + S.P.R.R.**

SCALE 100 FT. TO ONE INCH.

Location of "L" Line from near intersection of 1st +
 Alameda Sts. to Connection with old line - near
 Los Angeles + Independence R.R. Depot on San Pedro Street
 Said line being designated by stakes marked "L"
 July 28th 1877 W^m T. Lambie.



Comp'd. 1877.



Recorded at the request of W.J. Moulton
July 31 1877 at 2 1/2 P.M.

26. 3

407