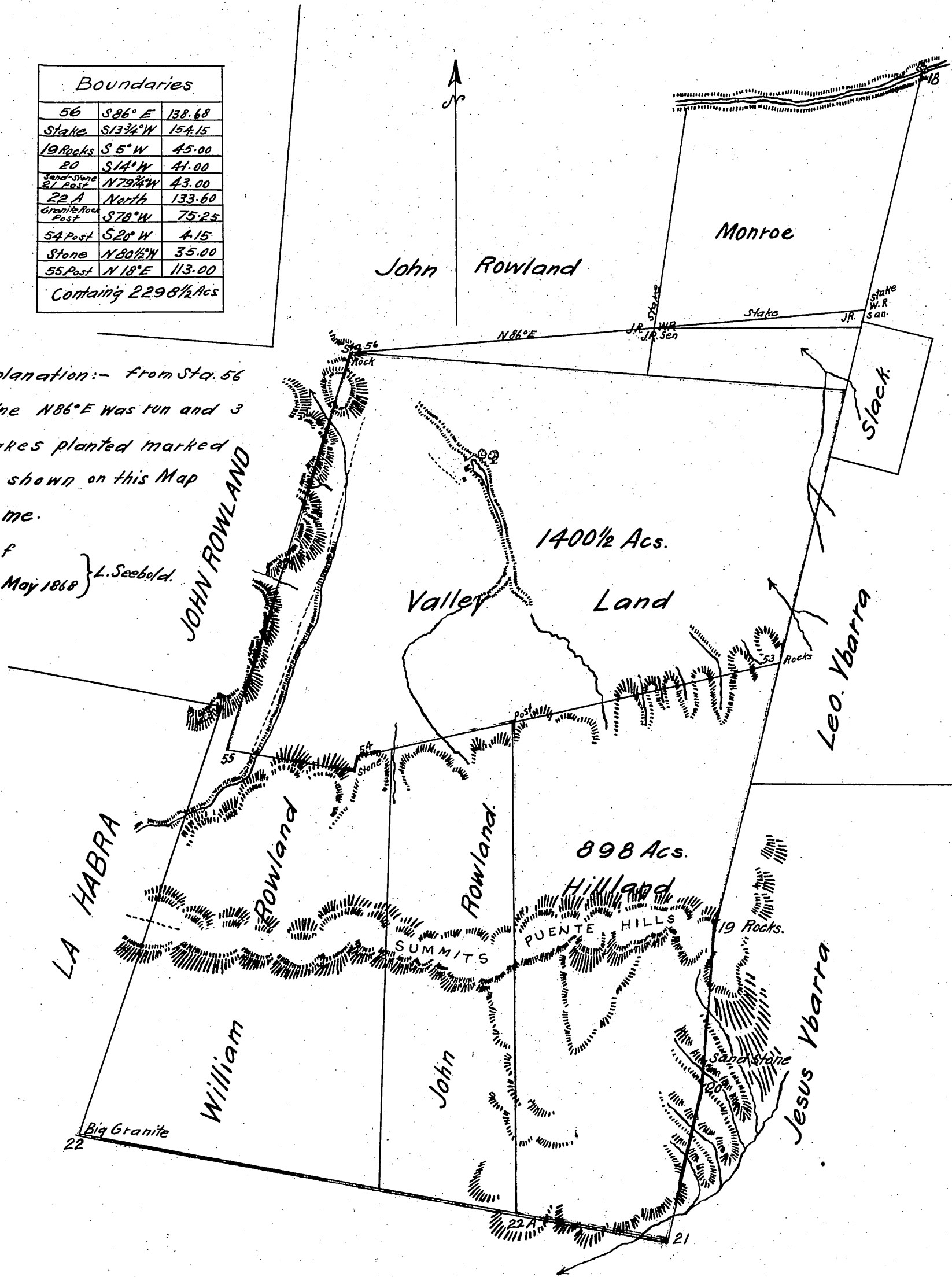


Boundaries		
56	S 86° E	138.68
Stake	S 13 3/4° W	154.15
19 Rocks	S 5° W	45.00
20	S 14° W	41.00
Stone Post	N 79 3/4° W	43.00
22 A	North	133.60
Granite Rock Post	S 78° W	75.25
54 Post	S 20° W	4.15
Stone	N 80 1/2° W	35.00
55 Post	N 18° E	113.00
Containing 2298 1/2 Acs.		

Explanation:- from Sta. 56
 a line N 86° E was run and 3
 stakes planted marked
 as shown on this Map
 by me.

Surveyor of } L. Seebald.
 Division in May 1868 }



MAP

of the Land of L.C. Goodwin
 and Fro. Graziade. Surveyed
 by L. Seebald. True courses.
 Scale 20 chs per inch
 Var. 14° 15' E.

Reduced to a scale of 30 chs to 1 inch
 Recorded at request of L.C. Goodwin
 Aug 17 1877 at 10:10 AM.

Copy