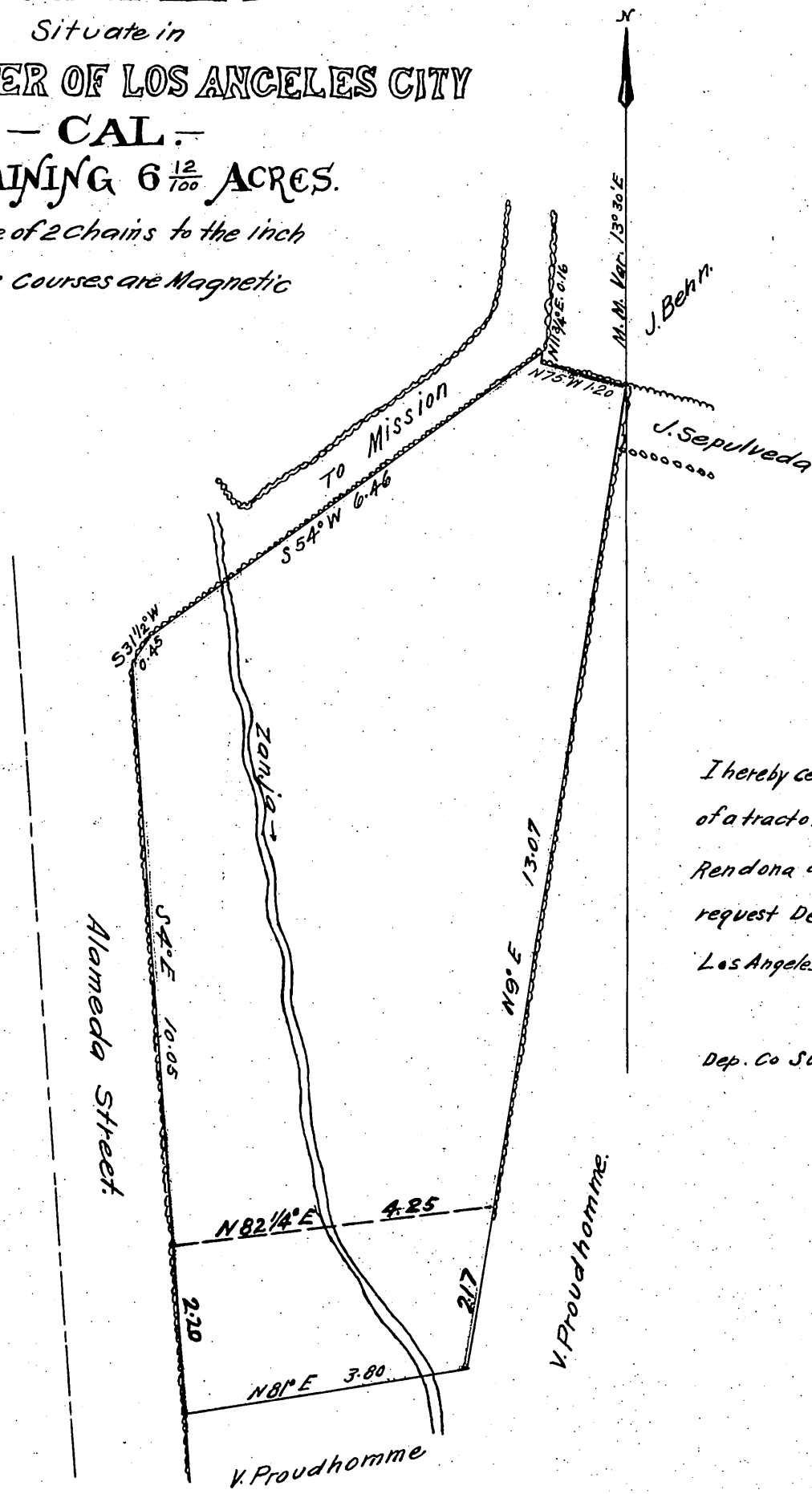


**TRACT OF LAND**  
 Situate in  
**N. E. QUARTER OF LOS ANGELES CITY**  
 - CAL. -  
**CONTAINING  $6 \frac{12}{100}$  ACRES.**  
 Scale of 2 chains to the inch  
 The Courses are Magnetic



I hereby certify this to be a correct plat  
 of a tract of land claimed by Do. Juana  
 Rendona and surveyed by me at her  
 request Dec 31 AD 1856

Los Angeles City May 2 1857

Adolphus F Waldemar.  
 Dep. Co Surv. Los Angeles Co. Cal.

I certify that I extended title in conformity with this plan on the 12th day of May AD 1857

John G Nichols  
 Mayor.

Recorded at request of J. M. Griffith Sept 3 1877 at 8<sup>20</sup> AM.

Comp'd  
 J. G. Griffith