

MAP

OF

NORWALK

ON

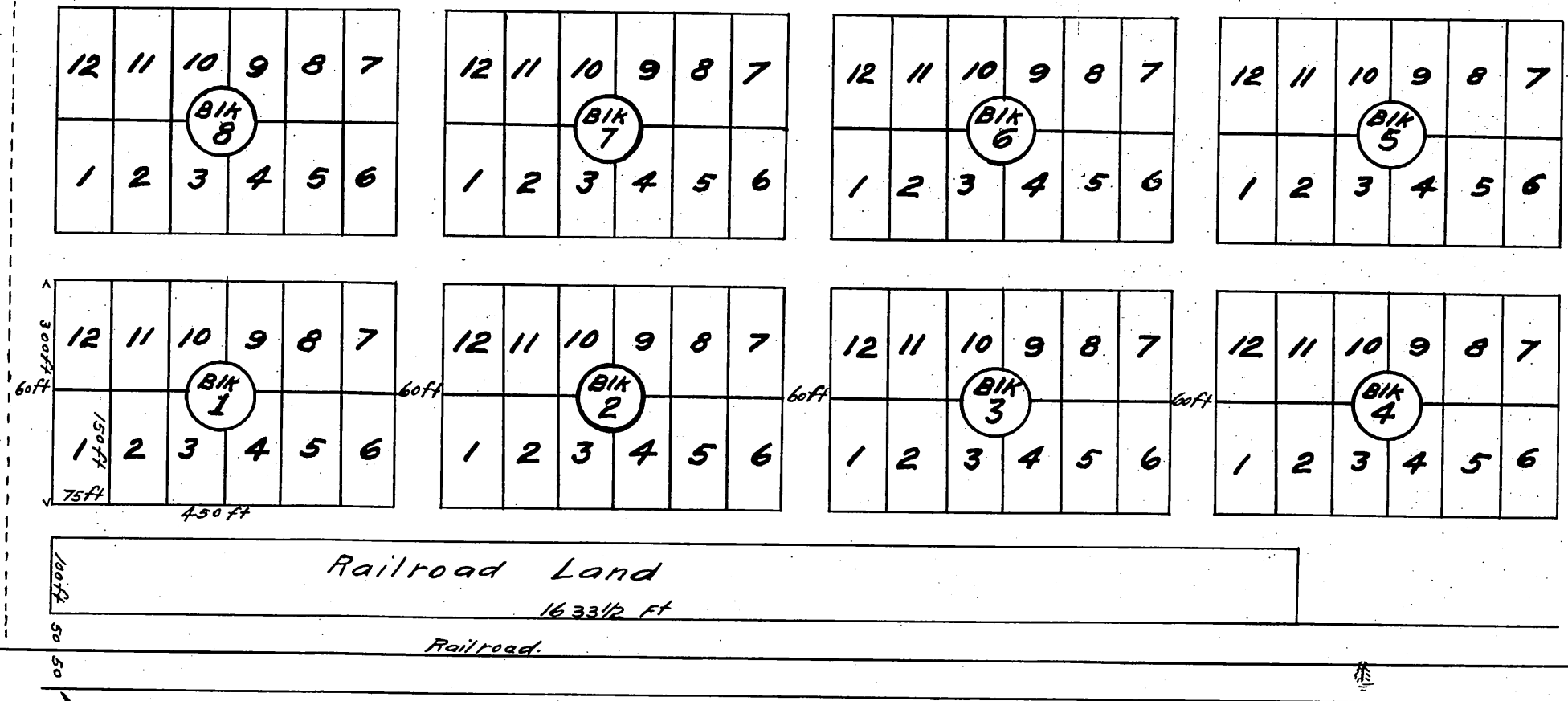
S 18 T 3 S R 11 W

Near Sycamore Grove
Coyote Rancho

Surveyed Decr 15-18
1874

by A Higbie
Scale 100' per 1 inch

Church St. changed to Broadway D:13-175
Front St. changed to Main St. D:13-175
Main St. changed to Front St. D:13-195



Extension of Front St. See R B 14-181-2 D:19-9
Deed for Spraul St. adjacent to Blks. 6 and 7 - D:29-80 D:7151-242
Par. lot 1 Blk. 8 for First St. D:39-32-O.R. 2742-383
Par. lots 1 & 2 " 8 " Church St. " " " " " " " "
Par. " 1 & 2 " 8 " alleys " " " " " " " "
Par. " 1 & 12 " 1 " First St. D:39-33-O.R. 2942-185

Recorded at the request of G. H.
Spraul Sept. 25 1877 at 10^o AM.
Scale reduced to 200ft. to 1 in.

Par. lots 11 & 12 Blk. 1 for Church St. D:39-33-O.R. 2942-185
Par. lot 12 --- " 8 " First St. D:39-33-O.R. 2916-80
Par. " 3 --- " 8 " Church St. D:39-34-O.R. 2916-79
Par. " 12 --- " 8 " First St. D:39-61-O.R. 2497-387
Vac. par. alley in Blk. 8 D:25-280 O.R. 3840-184