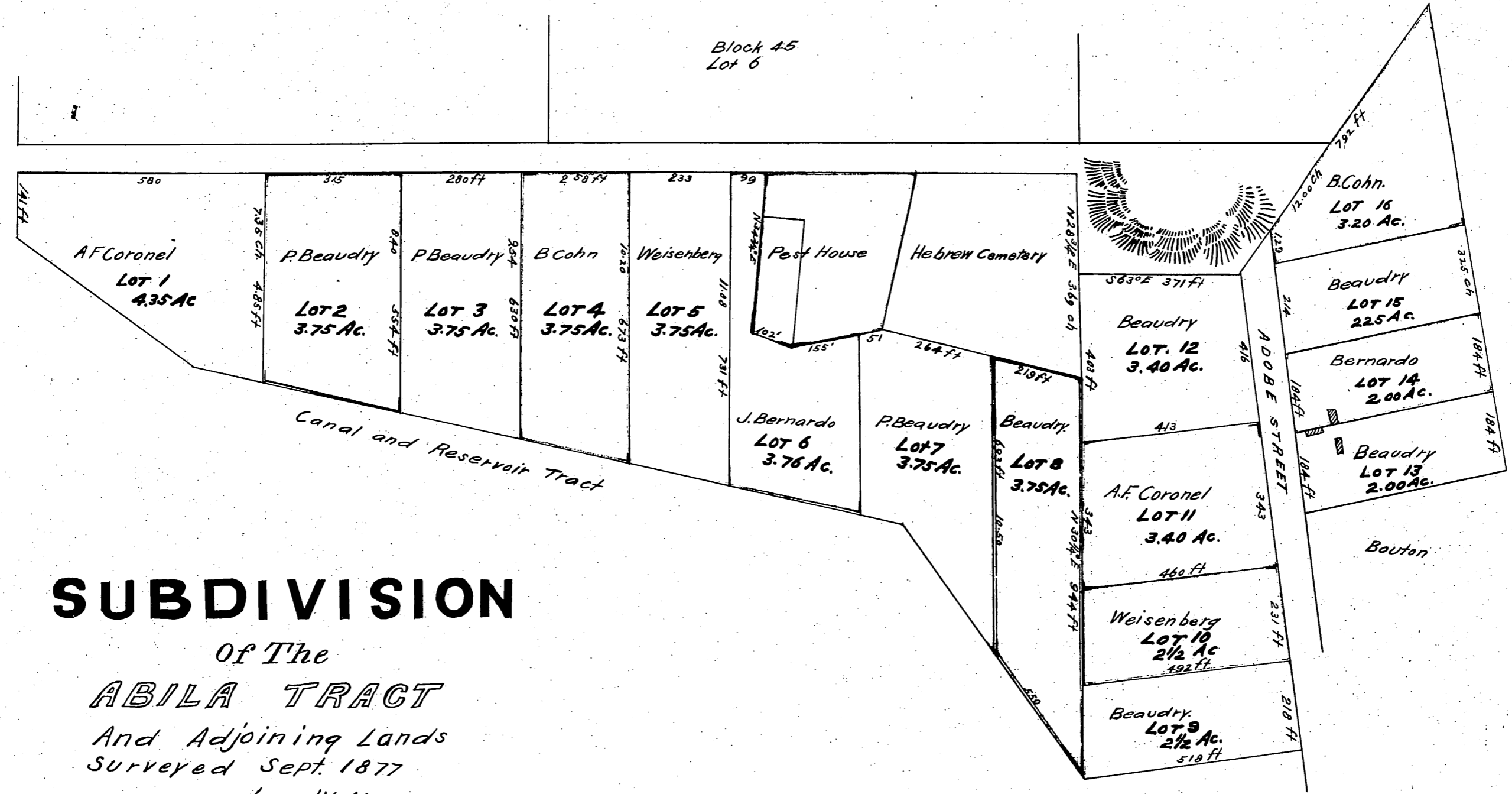


Comp'd. by J.

Block 45
Lot 6



SUBDIVISION

Of The

ABILA TRACT

And Adjoining Lands

Surveyed Sept. 1877

by W. Moore

Scale 1 inch to 2 chains

Reservoir St. changed to Park Terrace Ord. 15742

Park Terrace " " Reservoir St. - ord. 36867

Reservoir St. " " Lilac Ter. - ord. 37627

Por. of College St. decl. publ. street see ord. 38991

Reduced to scale of 1 inch to 4 chains

Recorded at the request of Wm Moore.

Oct 24 1877 at