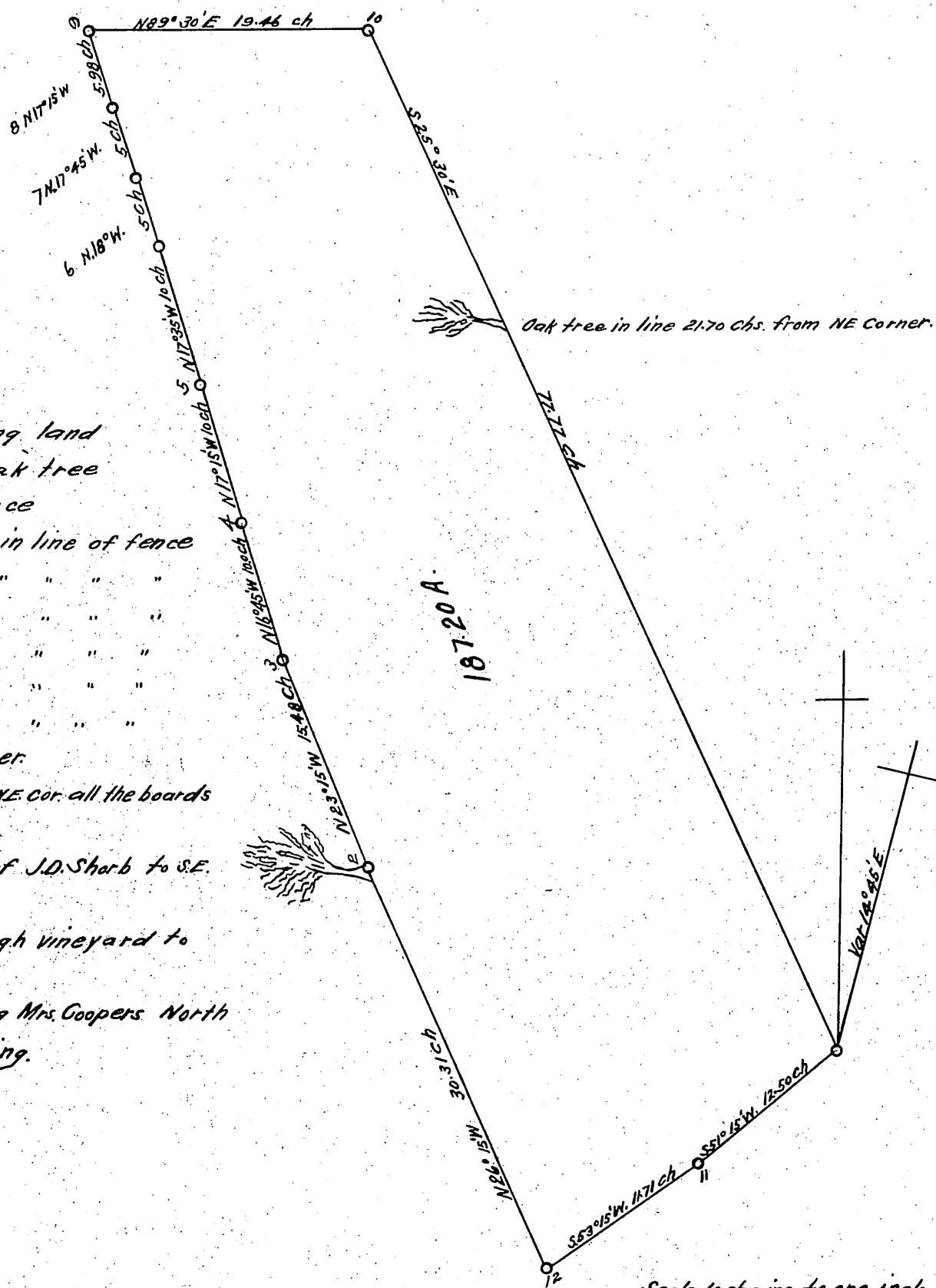


Survey of a tract of land in the B.D. Wilson Ranch  
 in Town 1 N. R 12 W San Bernardino Base and Merid-  
 ian lines in Sections 25, 26, 34 & 35

Com. at a post on Mrs. Coopers N. line N53°15'E 2585 chs  
 distant from a post in corner of fence on West side  
 of B.D. Wilson's Road 5 feet distant from the nearest  
 of two pear trees, said pear trees are in a north westerly  
 direction from cor. post.

- Sta 1 N26°15'W 30.31 chs along land  
 of B.D. Wilson to a large oak tree
  - " 2 N23°15'W 15.48 chs. to a fence
  - " 3 N16°45'W 10.0 ch following in line of fence
  - " 4 N17°15'W 10.0 ch " " " "
  - " 5 N17°35'W 10.0 ch " " " "
  - " 6 N18°W 5.00 ch " " " "
  - " 7 N17°45'W 5.00 ch " " " "
  - " 8 N17°15'W 598. ch. " " " "
  - to North fence at N.W. corner.
  - " 9 N89°30'E 19.46 ch to the NE. cor. all the boards  
 in the fence marked
  - " 10 S25°30'E 77.77 ch. along of J.D. Shorb to S.E.  
 cor. just south of reservoir
  - " 11 S51°15'W 12.50 ch through vineyard to  
 center of Mission ditch
  - " 12 S53°15'W 11.71 chs. along Mrs. Coopers North  
 line to place of beginning.
- Containing 187.20 A.



187.20 A.

Scale 10 chains to one inch  
 Var 14°45'E

Survey Made April 1 1876 by S. Mosley  
 Recorded at the request of M. De B. Shorb  
 Dec. 22 1877 at 12<sup>th</sup> M.

Copy  
 1877

22