

Hawkins

C.C. Mason

30	63.75	63.75	63.75	63.75	63.75	63.75	63.75	63.75	63.75	63.75	63.75	63.75	63.75	63.75
240	1	2	3	4	5	6	7	8	9	10	11	12	13	14

FULTON

80											63.75						
290	36	37	38	39	40	41	42	43	44	LOS ANGELES ST				46	47	48	49

30																	
290	58	59	60	61	62	63	64	65	66	LOS ANGELES ST				68	69	70	71

M<sup>c</sup>LEAN

66																	
293.20	88	89	90	91	92	93	94	95	96					98	99	100	101
	63.75	63.75	63.75	63.75	63.75	63.75	63.75	63.75	63.75	63.75	63.75	63.75	63.75	63.75	63.75	63.75	63.75

Hawkins 50° 2' W 1322.20'

Center of Sec 6 T. 3 S. R. 11 W. S. B. M. N89° 55' E

PLAA

Beck

OF

Fulton Sulphur Wells

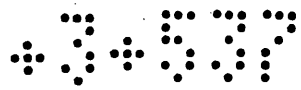
SITUATED IN

RANCHO SANTA GERTRUDES Los Angeles Co. Cal.

Surveyed Jan 1878 by ET Wright C.E.

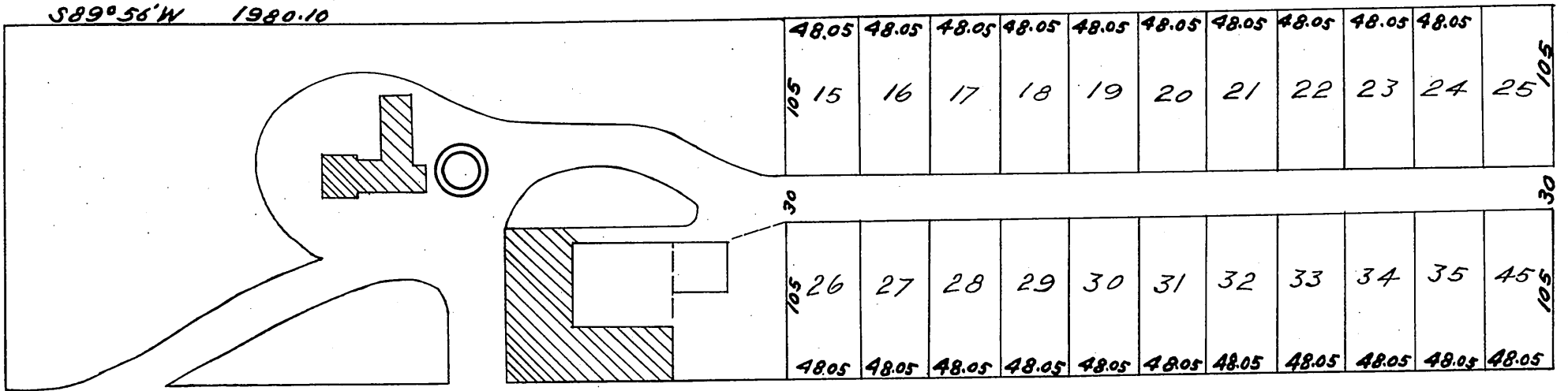
Scale 100 feet one inch

3 26

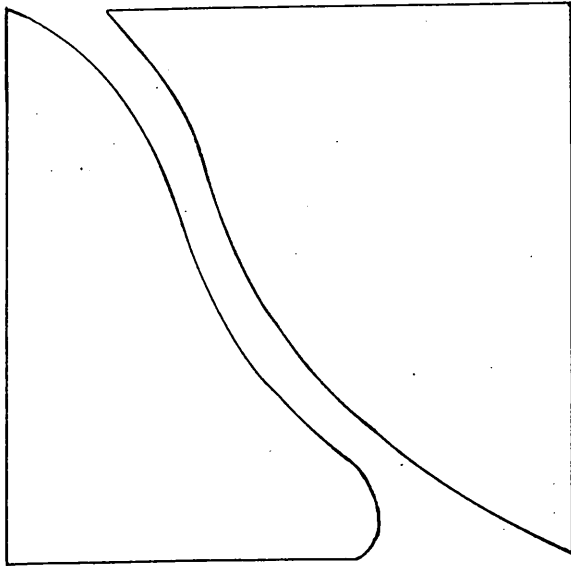


L Mason

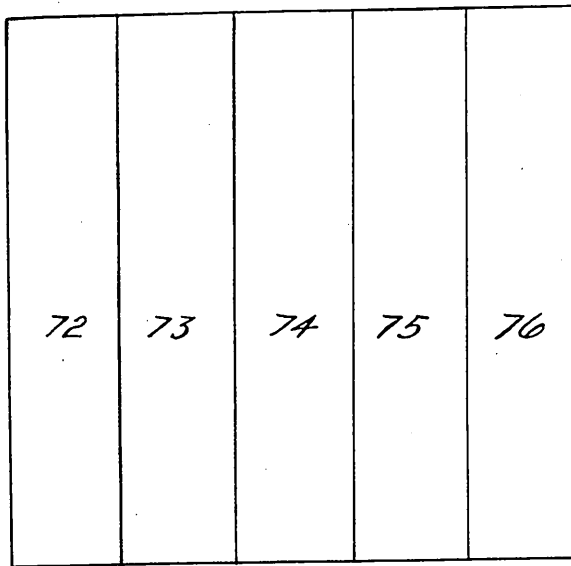
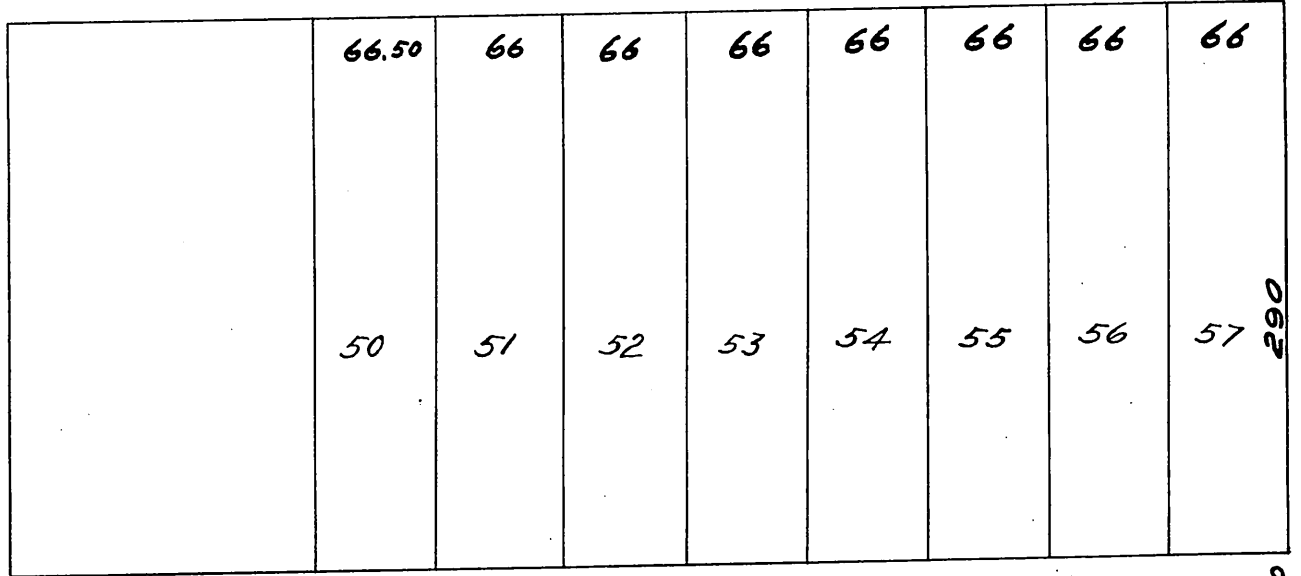
S89°56'W 1980.10



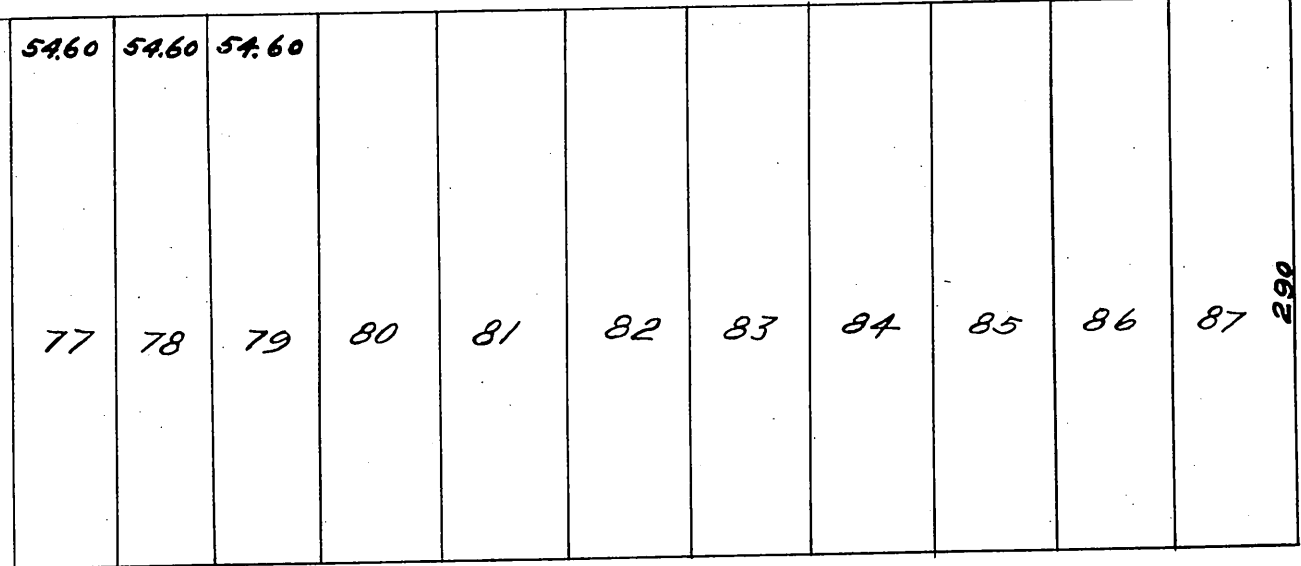
AVE



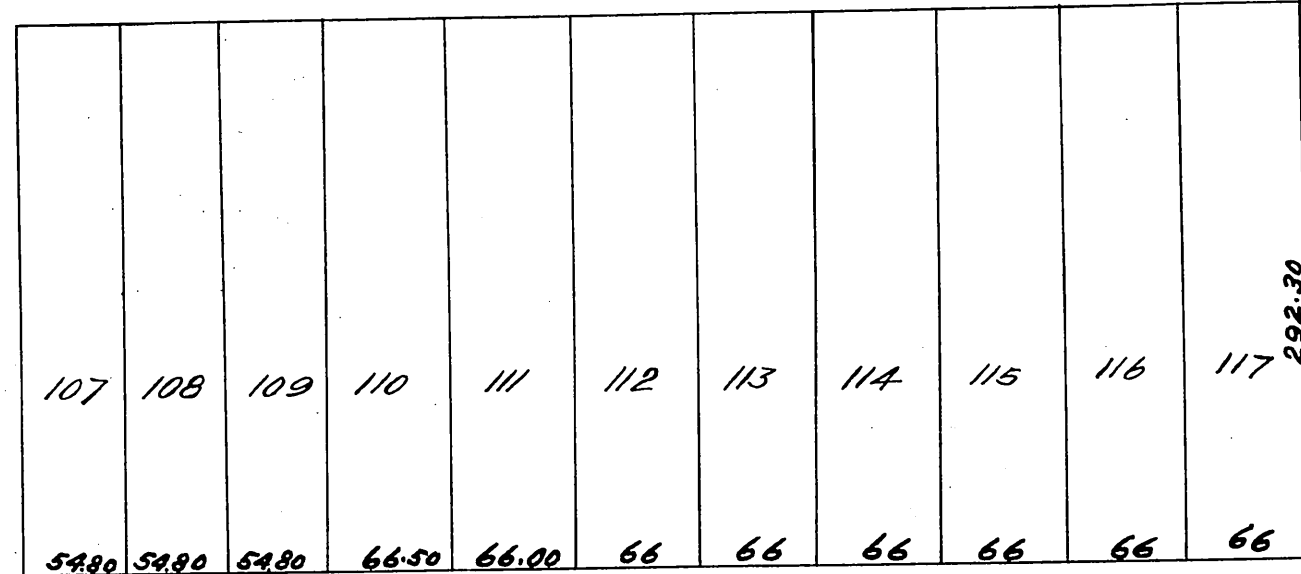
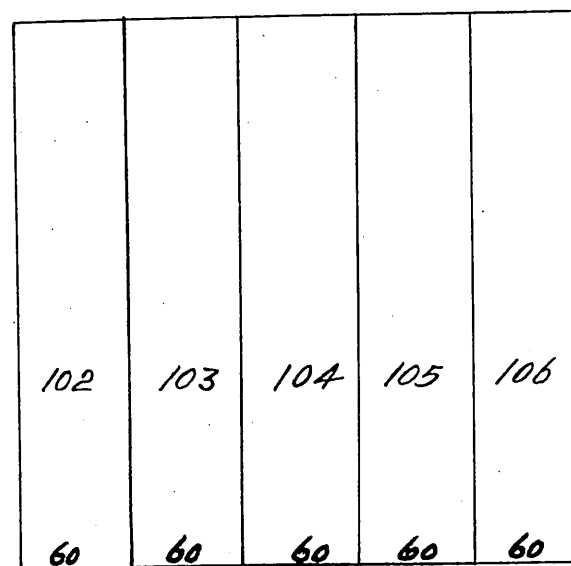
ST



SPRING



STREET



1981.40

All Streets and Avenues shown on this map  
 Declared to be Public Highways. D: 27-216 R.B. 1-212  
 Fulton Ave. changed to Anaheim Telegraph Rd. D: 13-111

Recorded at the request of J.E. Fulton.  
 Jan. 18 1878 at 12:30 M.

Camped

Santa Gertrudes Assn.  
North 1321.30

33

3  
26.