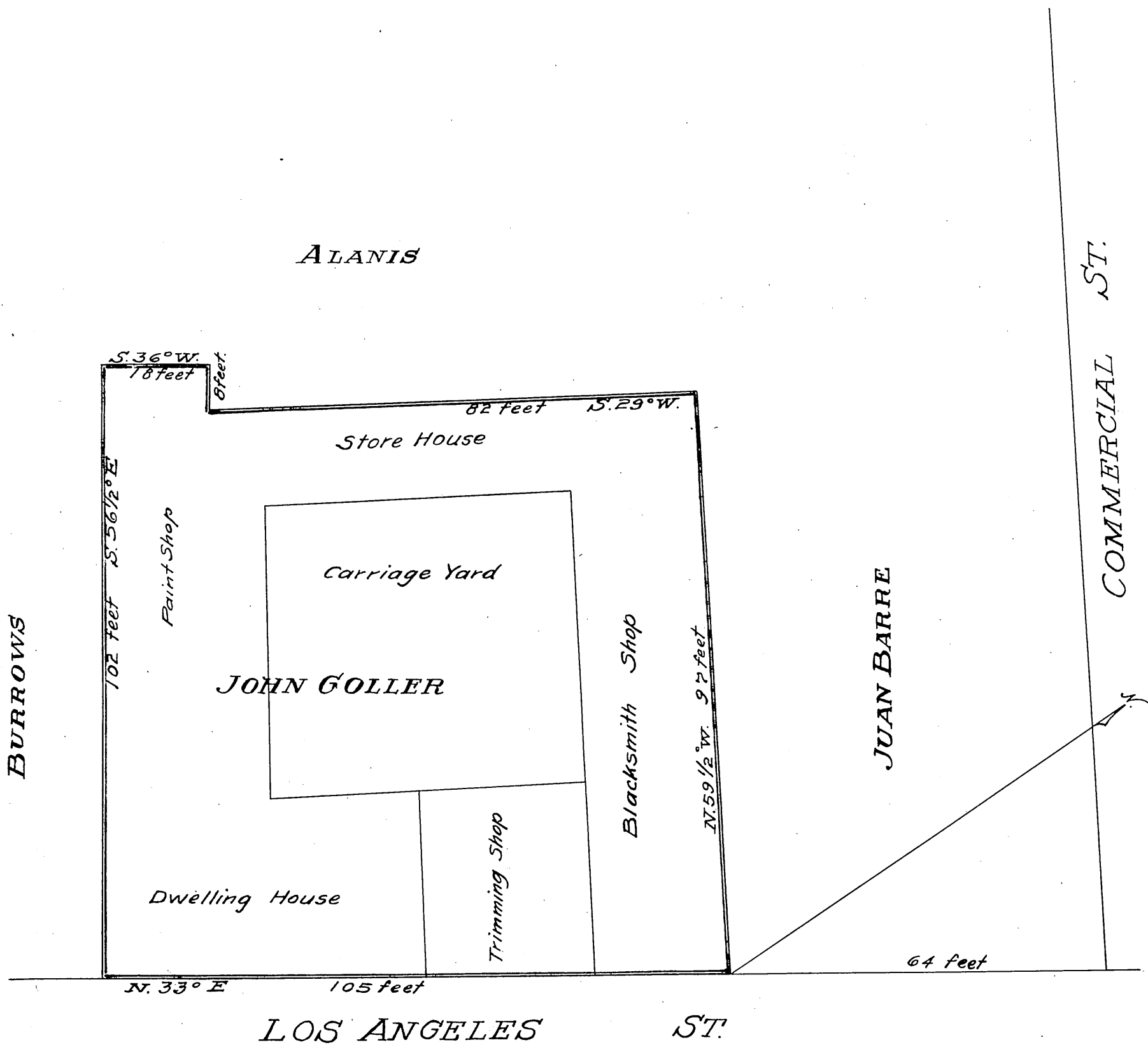


PLAN OF JOHN GOLLER'S LOT
 Situated on Los Angeles Street formerly known
 as Requena St. Surveyed Dec. 19 1873 by request
 of John Goller, by William Moore.
 City Surveyor of Los Angeles City
 Courses true Mer.



RECORDED AT THE REQUEST OF J. GOLLER
 SEPT. 12 1878 AT 3.40 P.M.