

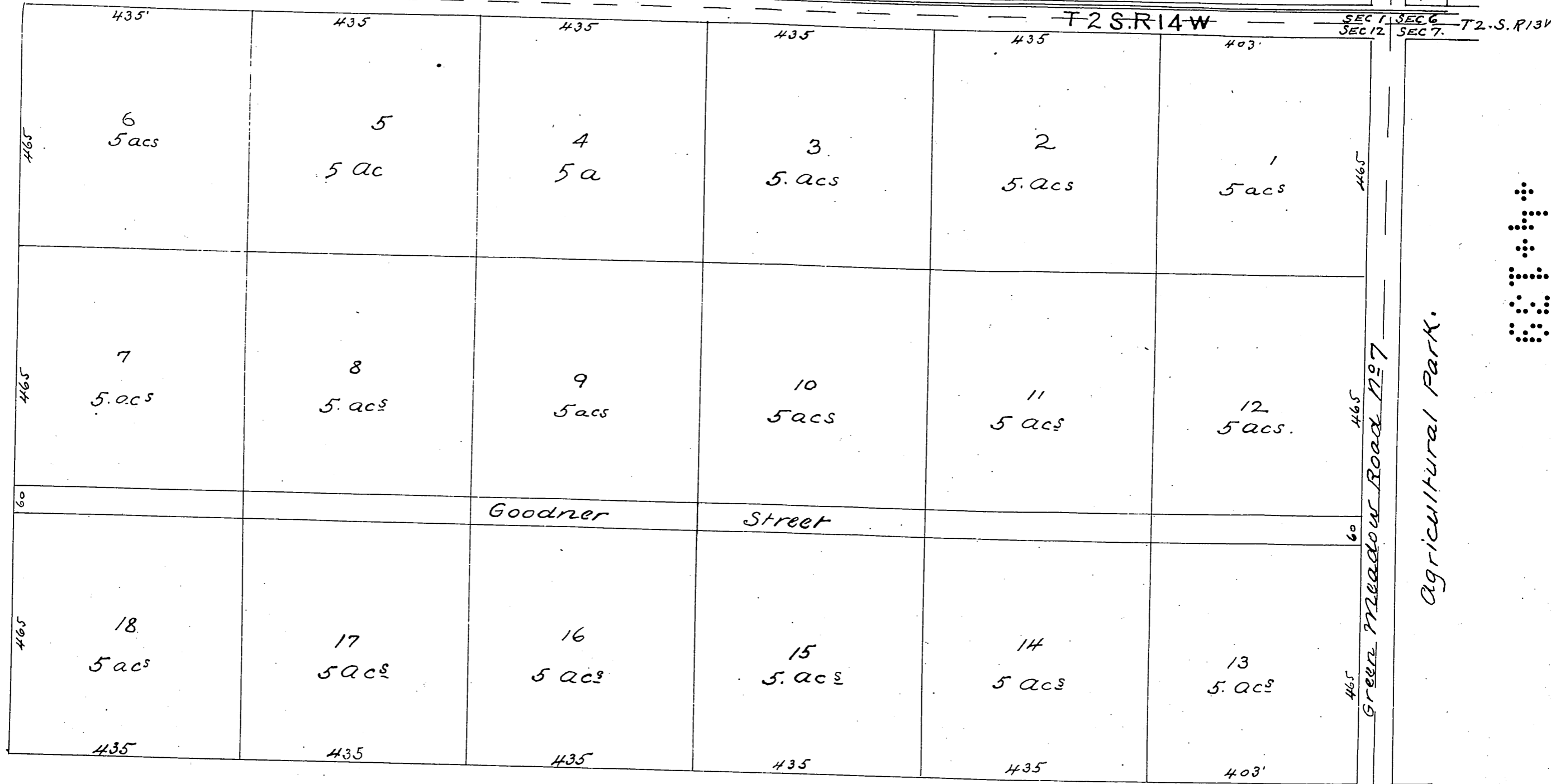
The Goodner & O'Melveny Tract at the Agricultural Park
Los Angeles Cal.

Scale 100ft to one inch

Los Angeles and Independence Rail Road

Surveyed Dec 1875 By E. T. Wright

Depot



a full true and correct copy of the original, Record at request of
H. K. S. O. Melveny July 22nd 1879 at 45 mins past 9 a.m.
(this map reduced to 1/2 the Original Size)

Chas. E. Miles Co. Recorder

by G. E. Gard Depy.

