

Subdivision
of the

N 1/2 of Lot 7 Block 73 Hancock's Survey

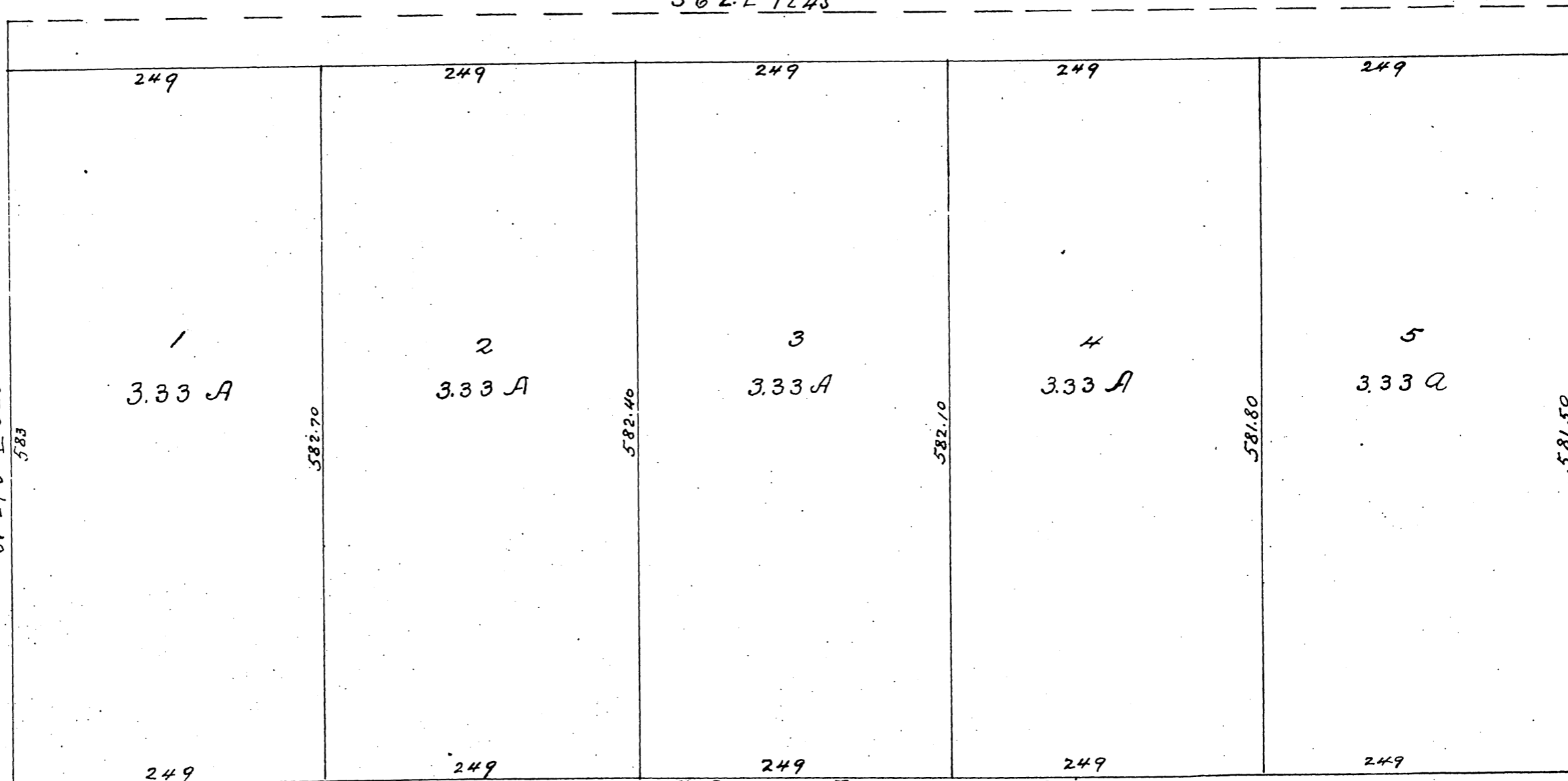
Los Angeles City Cal

for A. B. Judson et al

Surveyed September 22 1879
By E. J. Wright C.E.

Scale 100ft one inch

S 62° E 1245



N 62° 4' W 1245

A full true and correct copy of the original
Recorded at request of A. B. Judson Sept 26 1879
at 45 mins past 3. P. M.

Chas E. Miles Co Recorder
221 E. 2nd St. Los Angeles

RECORDED
INDEXED