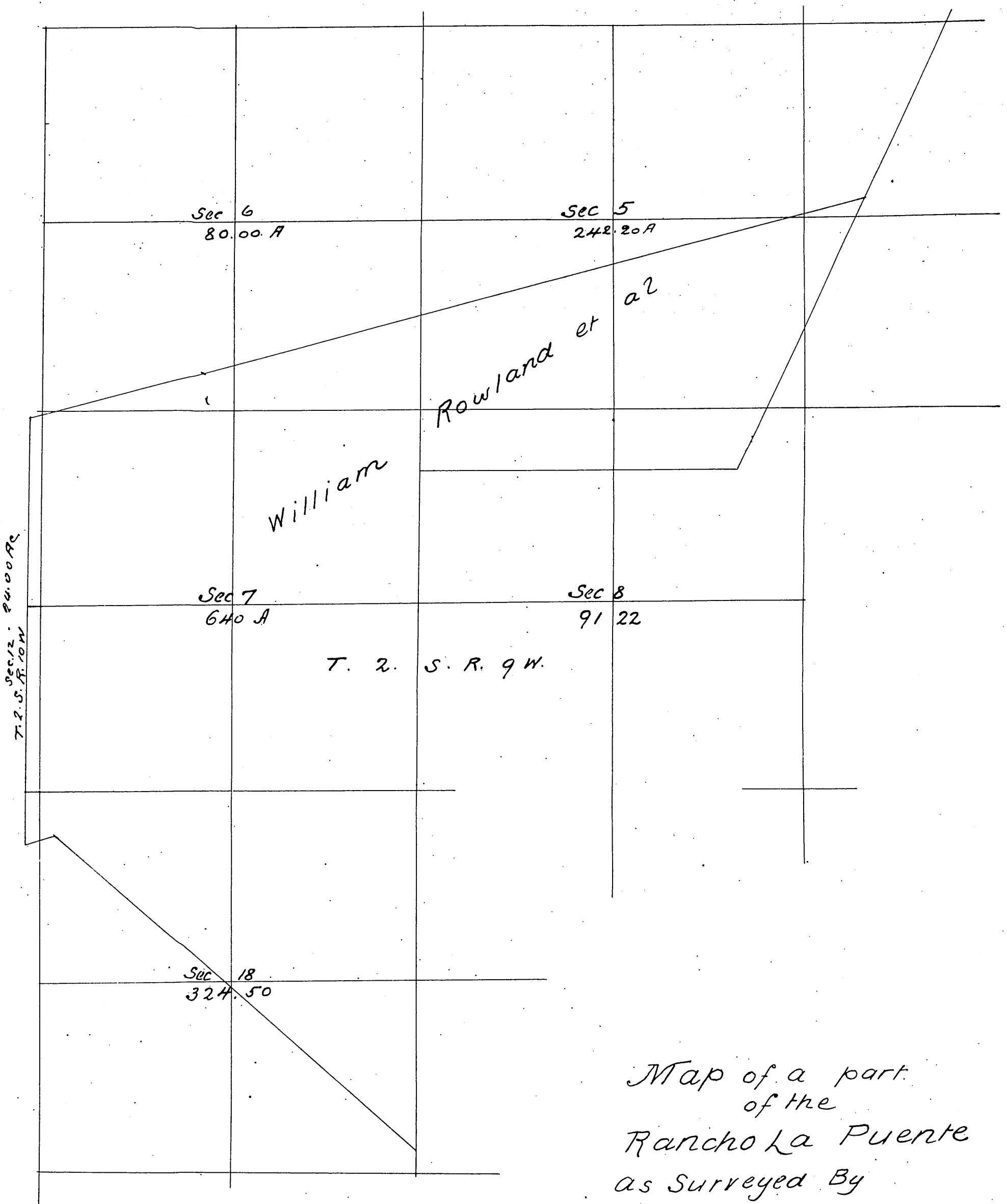


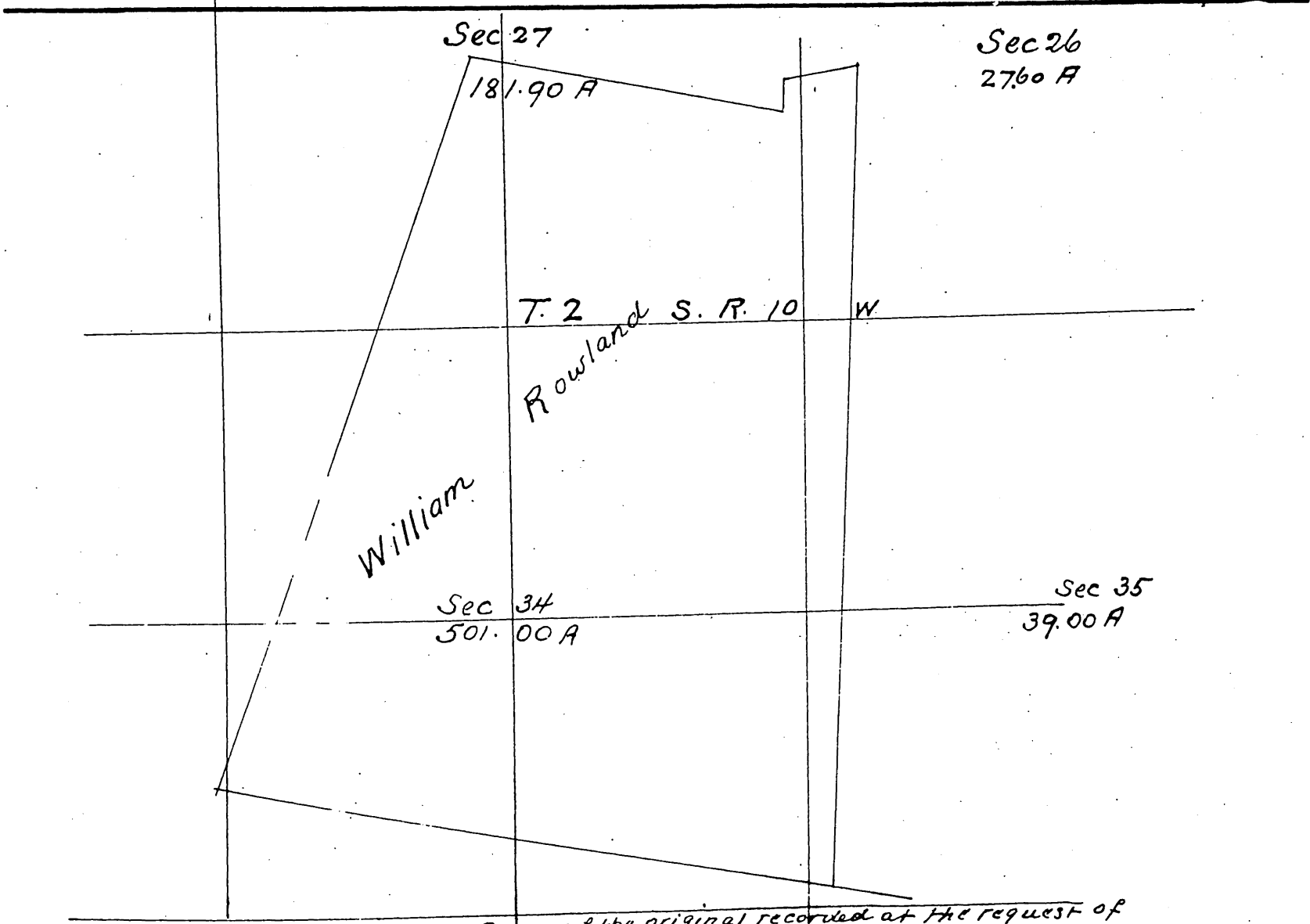
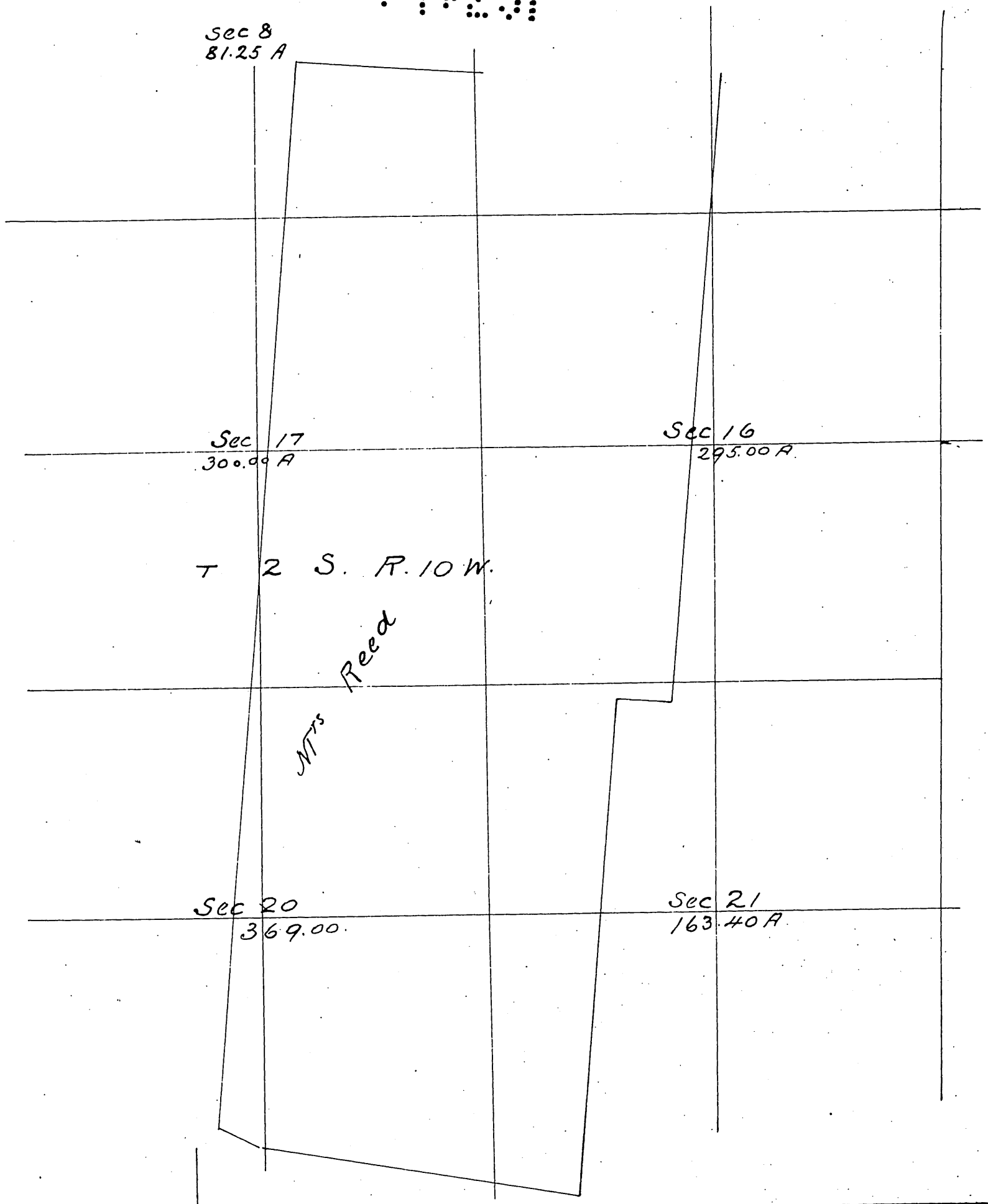
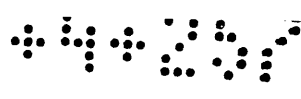
Map
of
That Portion of the
La Puente Rancho allotted
to
Thomas Rowland
surveyed by L. Seibold

A full true and correct copy of the original recorded at the request of W. R.
Rowland April 24 1880 at 55 min past 9. A.M

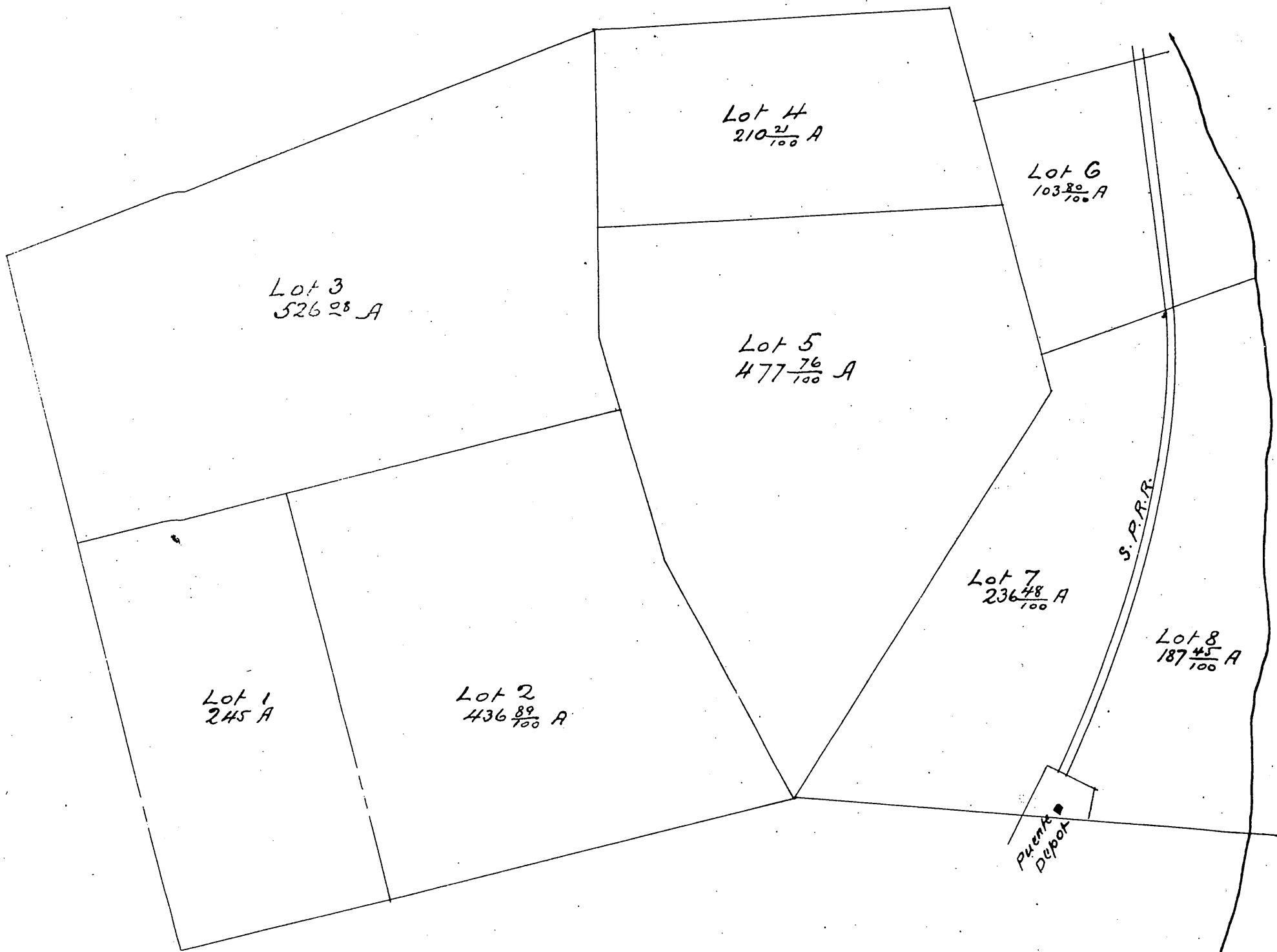
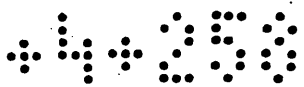
Chas L Lamb County Recorder
C. H. Dunsmoor Deputy



Map of a part
of the
Rancho La Puente
as Surveyed By
L. Seibold

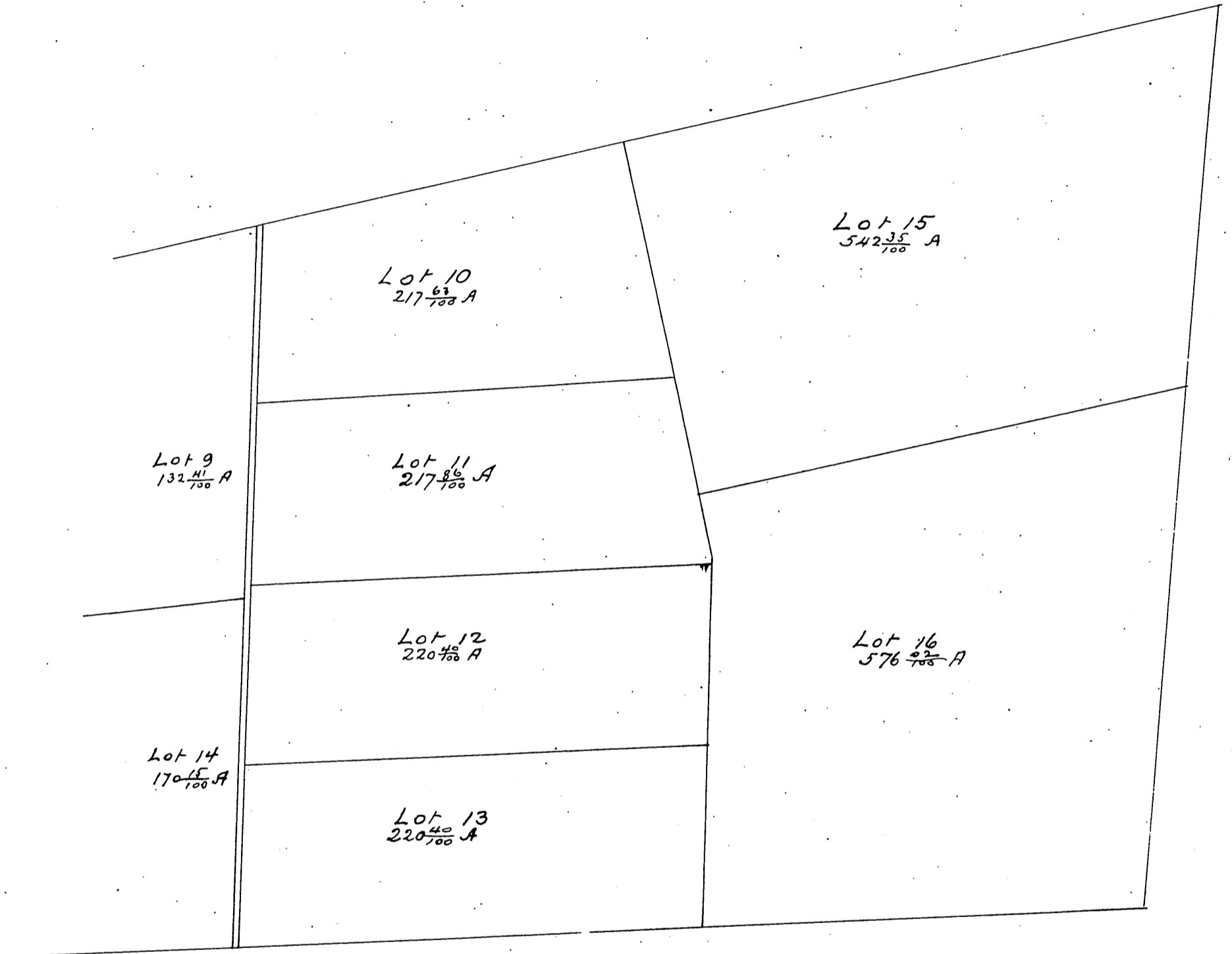


A full true and correct copy of the original recorded at the request of
 W. R. Rowland April 24. 1880 at 54 min past 9 o m Chas. C. Lamb County Recorder
 By C. H. Luns Moore
 Deputy



Map of Part of The
Rancho La Puente
owned by
Mrs C.M. Rowland, Victoria
Hudson and Albert Rowland

Surveyed by John E. Jackson



A full true and correct copy of the original recorded at the request of Albat Rowland
April 26 A.M. 1880 at 40 min past 11 AM

Chas. C. Lamb County Recorder.
C. H. Hunsmoor Deputy.