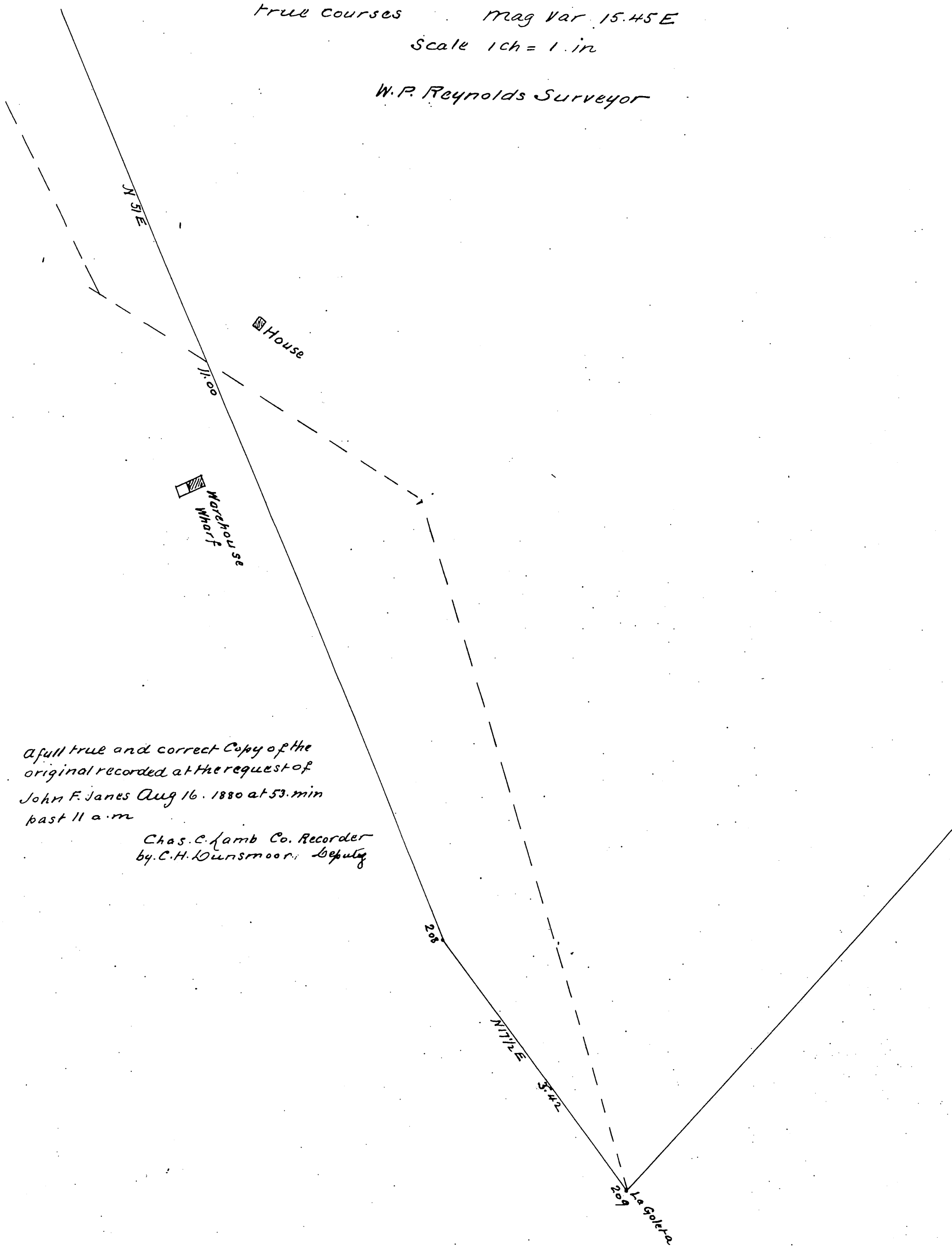


Plat of Tract of Land owned by J. F. James contg 1 ac in Rancho Los Palos Verdes

True Courses Mag Var 15.45 E

Scale 1 ch = 1 in

W. P. Reynolds Surveyor



A full true and correct Copy of the
original recorded at the request of
John F. James Aug 16. 1880 at 53. min
past 11 a.m

Chas. C. Lamb Co. Recorder
by C. H. Dunsmoor, Deputy