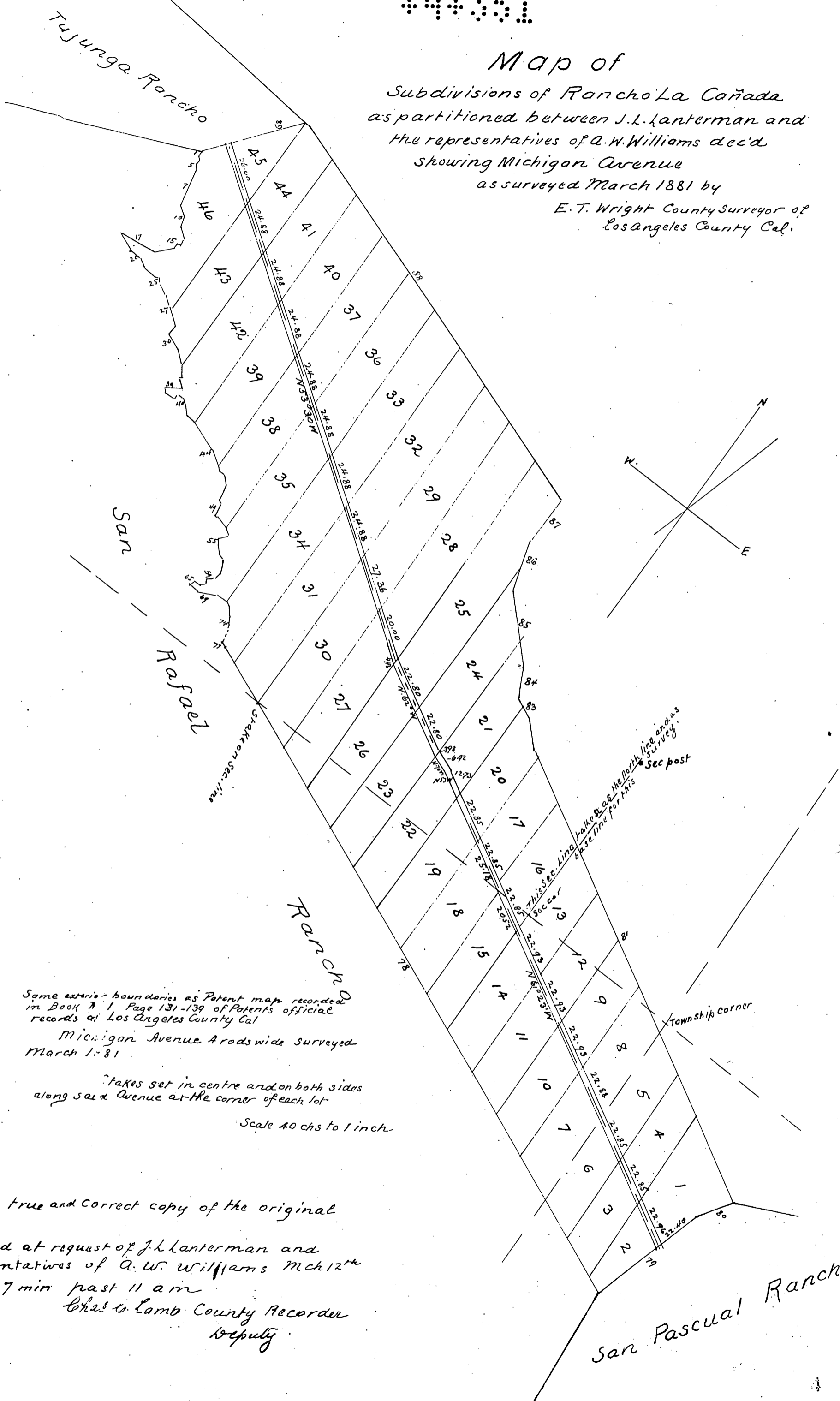


Map of
 Subdivisions of Rancho La Cañada
 as partitioned between J.L. Lanterman and
 the representatives of A.W. Williams dec'd
 showing Michigan Avenue
 as surveyed March 1881 by

E.T. Wright County Surveyor of
 Los Angeles County Cal.



Same exterior boundaries as Patent map recorded
 in Book 7 1 Page 131-139 of Patents official
 records at Los Angeles County Cal
 Michigan Avenue A roads wide surveyed
 March 1-81

Takes set in centre and on both sides
 along said Avenue at the corner of each lot
 Scale 40 chs to 1 inch

a full true and correct copy of the original
 recorded at request of J.L. Lanterman and
 representatives of A.W. Williams Mch 12th
 1881 at 7 min past 11 am
 Chas. G. Lamb County Recorder
 Deputy

San Pascual Rancho