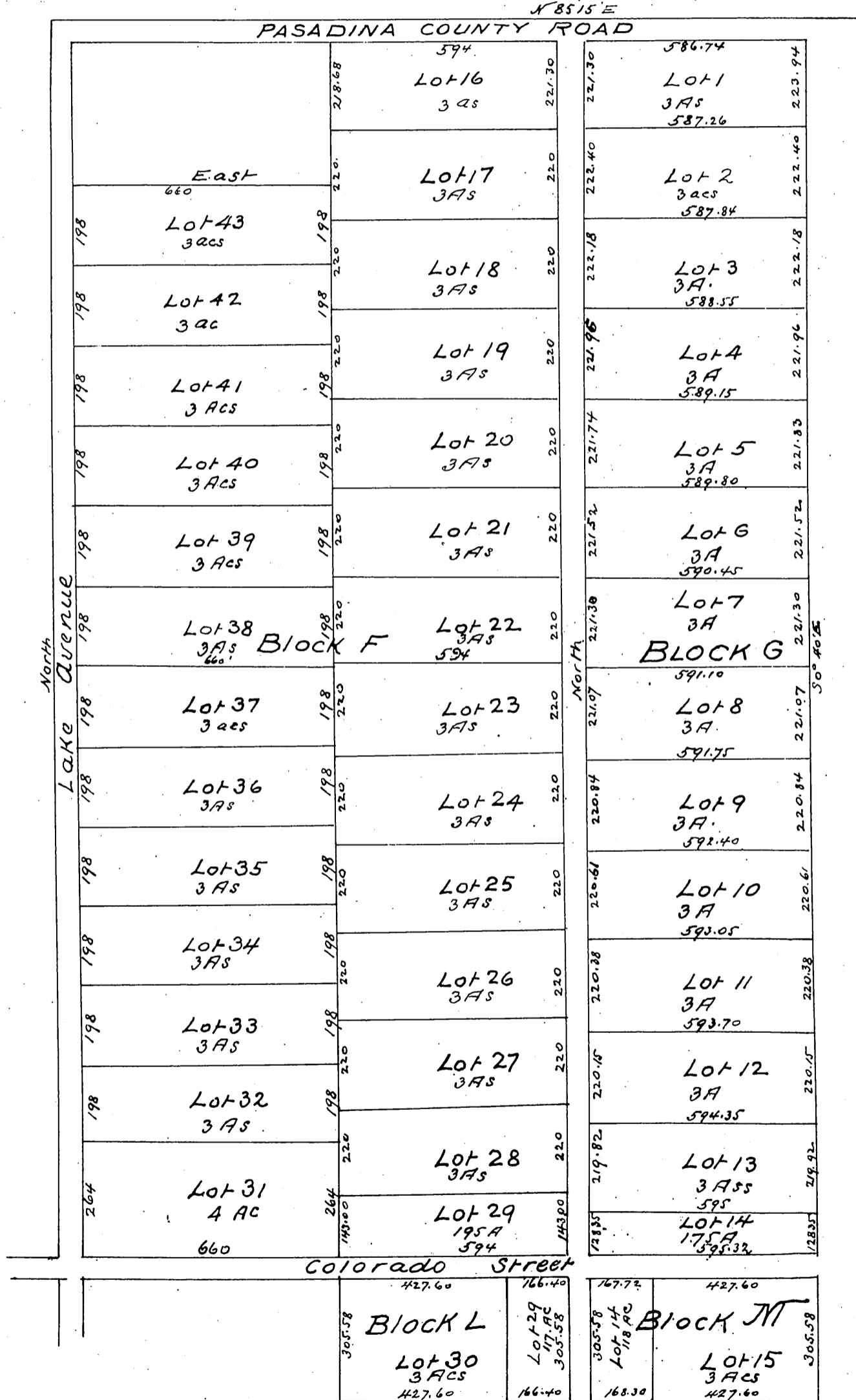


MAP OF LANDS OF
LANDS OF MUTUAL ORCHARD CO.
situated in the San Pasqual Tract
of Lake Vineyard Land and Water
Association San Gabriel
Valley, Los Angeles Co
made in July 1880 by E. T. Wright

Scale 200ft per inch

Co Surveyor
Variation 14°45' East



This plat reduced to two thirds its original size to accommodate it to this Book - With the above noted exception this is a full true and correct Copy of the original recorded at the request of E. T. Wright November 13th 1880 at 45 minutes past 4 p.m.

Chas. C. Lamb County Recorder
By C. N. Hamilton Deputy