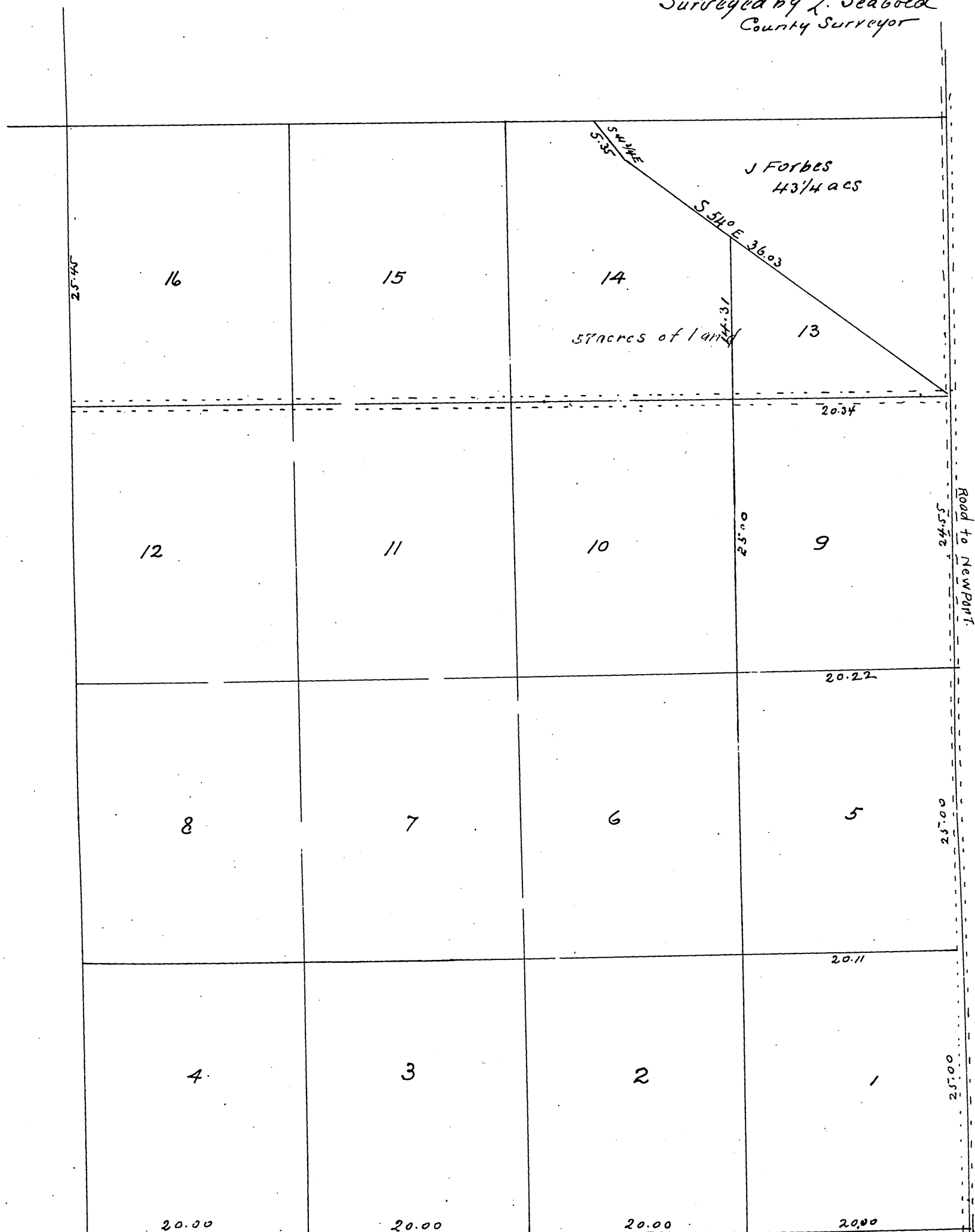


Land of G. Allen
 each full Lot contains 50 Acres
 Lots. no 1, 2, 3, & 4 are sold
 scale 10 chs per inch

Surveyed by L. Seabold
 County Surveyor



Banning

a full, true and correct copy of the original
 recorded at the request of D. S. McHenry March 17
 1881 at 40 min past 9 a.m.
 Chas. C. Lamb by C. H. Dunsmore
 Deputy