

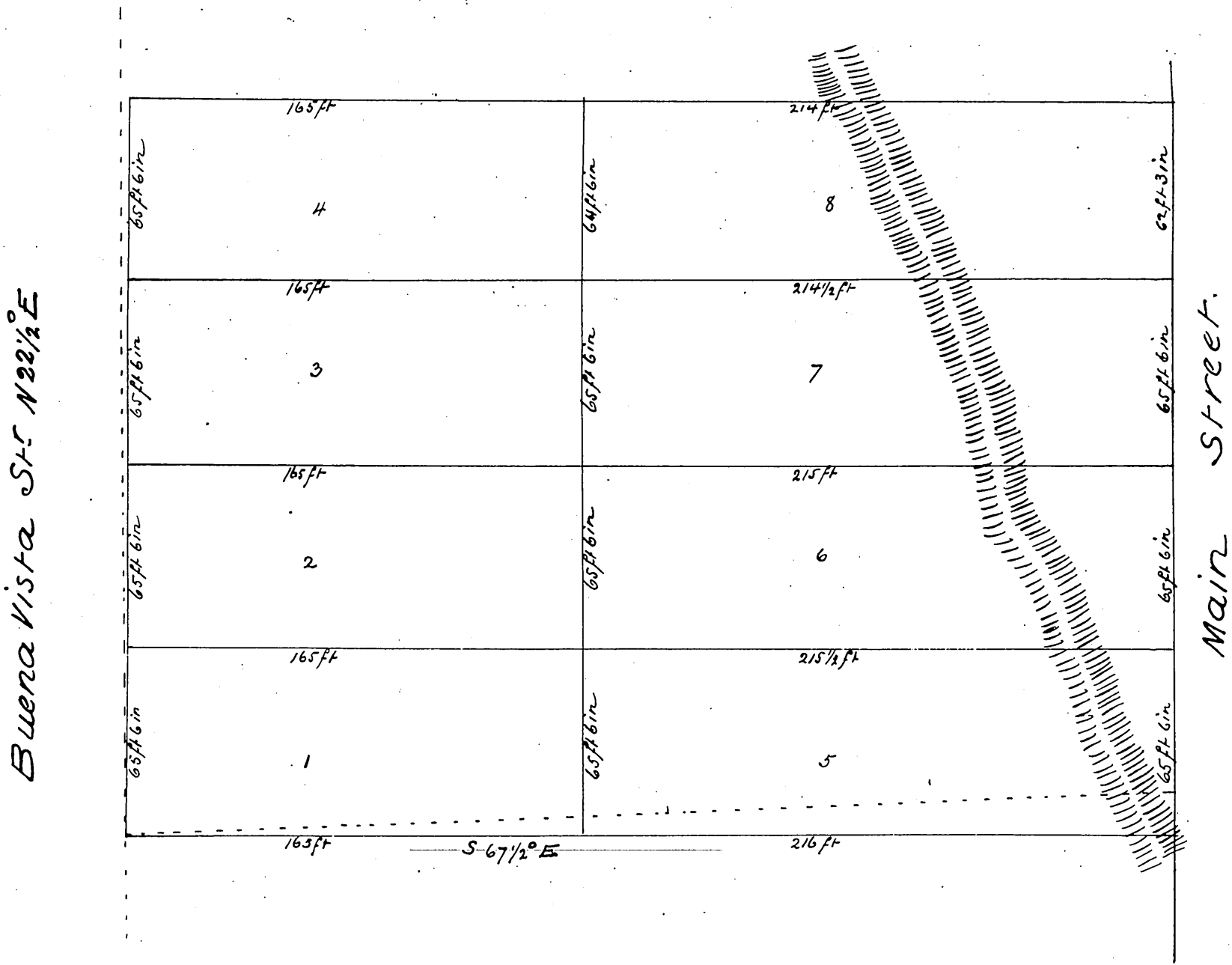
# Sepulveda Tract

Surveyed in September 1877 by

L. Seebold Scale 50 feet per inch Variation

14°30'E True Courses

Jos. Mullally.



a full true and correct copy of the original recorded at the request of Jos Mullally May 24, 1881 at 30 min past 10 am

Charles Lamb County Recorder

By Wm Hunsicker Deputy