

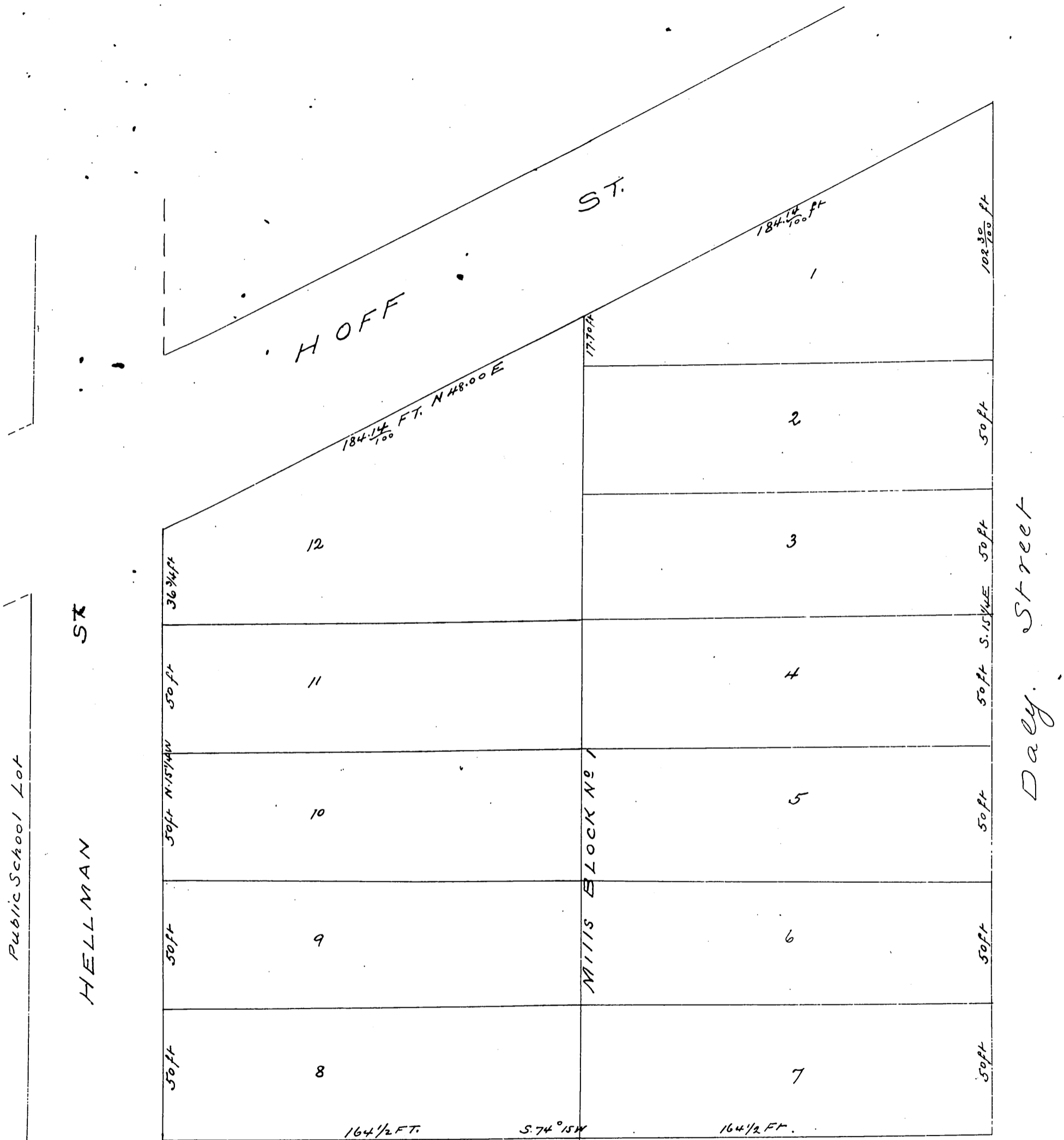
MAP OF MILLS

BLOCK No 1

in East Los Angeles and in Griffins

Addition

Surveyed Dec. 30th 1881 John Goldsworthy
Surveyor



a full, true and correct copy of the original
recorded at the request of Howard Mills Jany
4th 1882 at 29 min past 10 a m.

Chas. C. Lamb County Recorder
by A. N. Hamilton Deputy