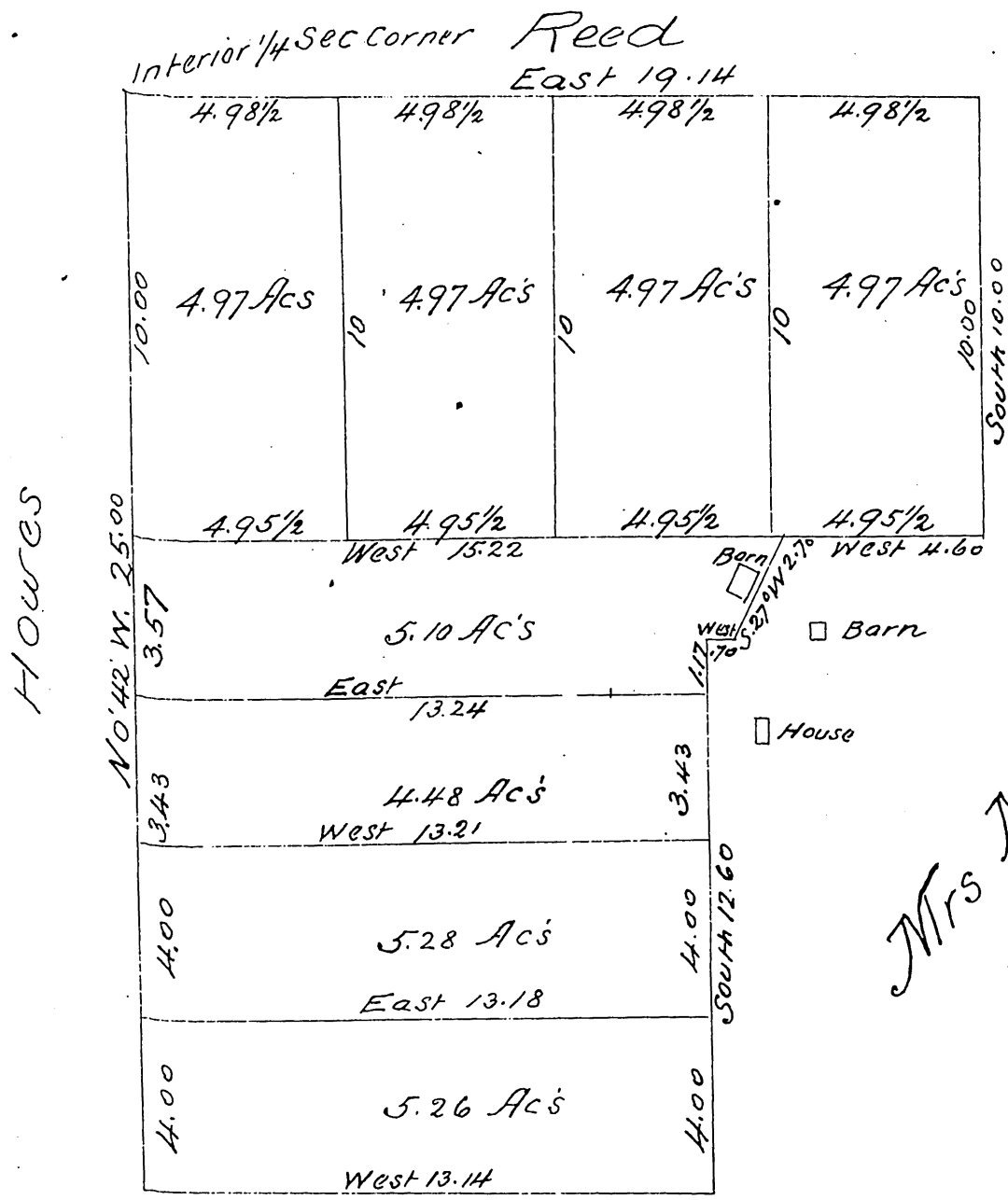


Map
of a
Portion of S.E. 1/4 Section 1
T. 2 S. R. 14 W. S. B. M.



Bernard Newman

This is to certify that I, E. J. Wright County Surveyor acting under instructions from Mary Newman, Daniel Newman and S. S. Chaffee did survey a part of the West half of the South East Quarter of Section 1. T. 2 S. R. 14. W. S. B. M. to determine and set apart The forty (40) acres of land conveyed by Mary Newman to Daniel Newman by deed of October 17th 1876 Recorded in Book 50 of deeds page 6 Records of Los Angeles County and further certify that The subdivision of said 40 acres tract is in accordance with the instructions of S. S. Chaffee and that this Map Correctly represents said tract and Subdivision

Los Angeles Dec. 13th 1881

E. J. Wright County Surv.

a full true and correct copy of the Original recorded at the request of M. L. Wick's Dec 14 1881. at 25 min past 9 a.m.

Chas. C. Lamb
County Recorder
by A. N. Hamilton
Deputy