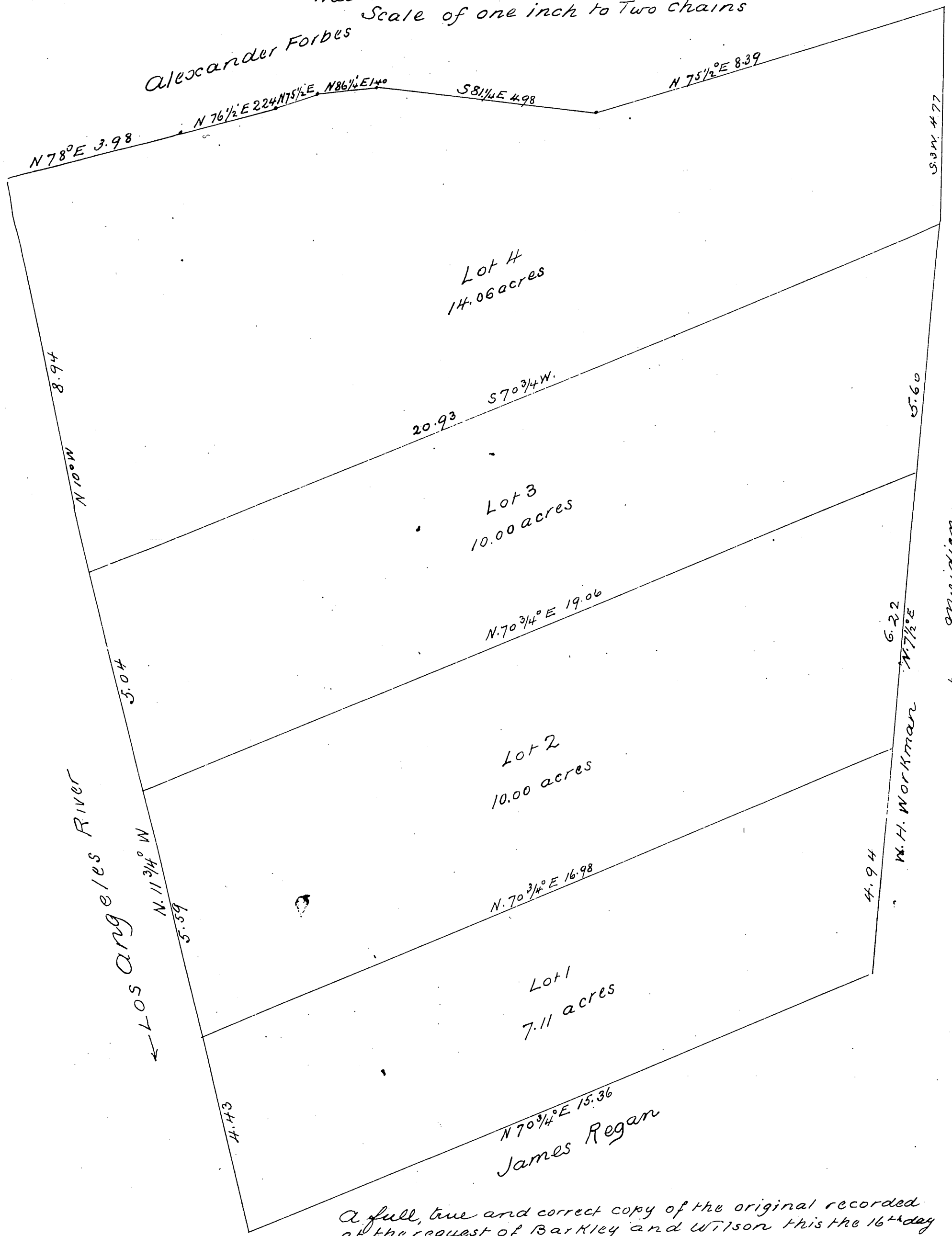


Blow Tract

on the east bank of Los Angeles River
in the City & County of Los Angeles Cal
Surveyed Jan 4+5 1882 by Hansen & Solano
True Courses Variation 14°45' East

Scale of one inch to Two chains

Alexander Forbes



A full, true and correct copy of the original recorded
at the request of Barkley and Wilson this the 16th day
of Jan'y 1882 at 13 min past 2 o'clock P. M.

Chas. C. Lamb County Recorder
By A. N. Hamilton Deputy