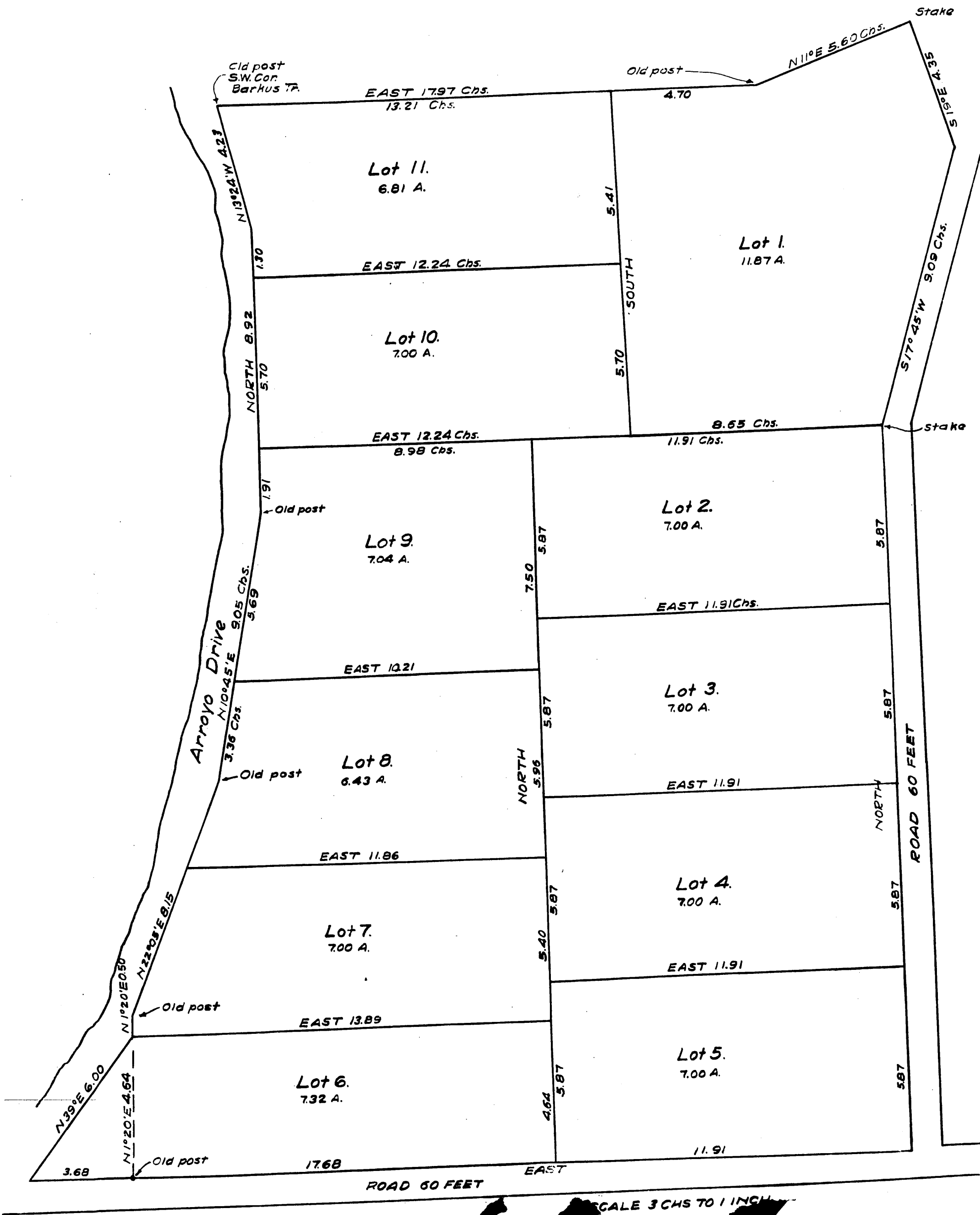


PLAT OF CALVIN FLETCHER'S

SUBDIVISION OF THE TRACT OF SAN GABRIEL ORANGE GROVE ASSOCIATION'S LAND MARKED "MAHEW" IN DIVISION H ON THE MAP OF SAID LAND RECORDED JUNE 25-1874 IN BOOK 2 MISCELLANEOUS RECORDS OF LOS ANGELES COUNTY PAGE 556 ET. SEQ.

A FULL TRUE AND CORRECT COPY OF THE ORIGINAL RECORDED AT THE REQUEST OF O.R. DOUGHERTY APRIL 29, 1882 AT 3 MIN. PAST 2 P.M.

CHAS. C. LAMB COUNTY RECORDER
BY A. N. HAMILTON DEPUTY



SCALE 3 CHS TO 1 INCH