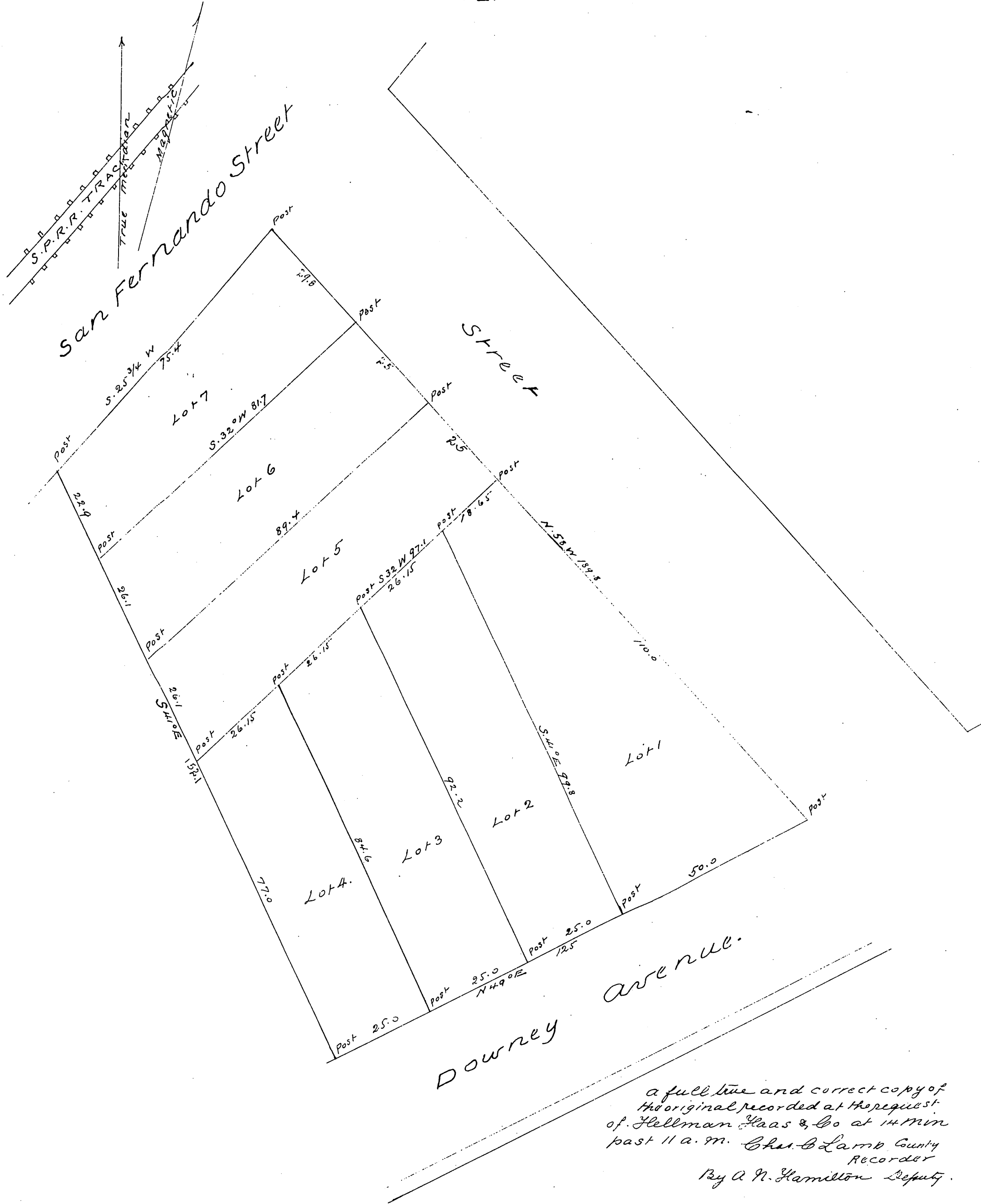




# Diagram of Subdivision of Part of The Junction Block in Los Angeles City the Property of Hellman Haas & Co

Scale 20 feet pr inch  
Distances in feet + Dec.  
Magnetic Courses Variation 4°45'E.  
Surveyed March 20th 1882  
by Frank Lecourreux



a full true and correct copy of  
the original, recorded at the request  
of Hellman Haas & Co at 14 min  
past 11 a. m. Chas. B. Lamb County  
Recorder  
By A. N. Hamilton Deputy.