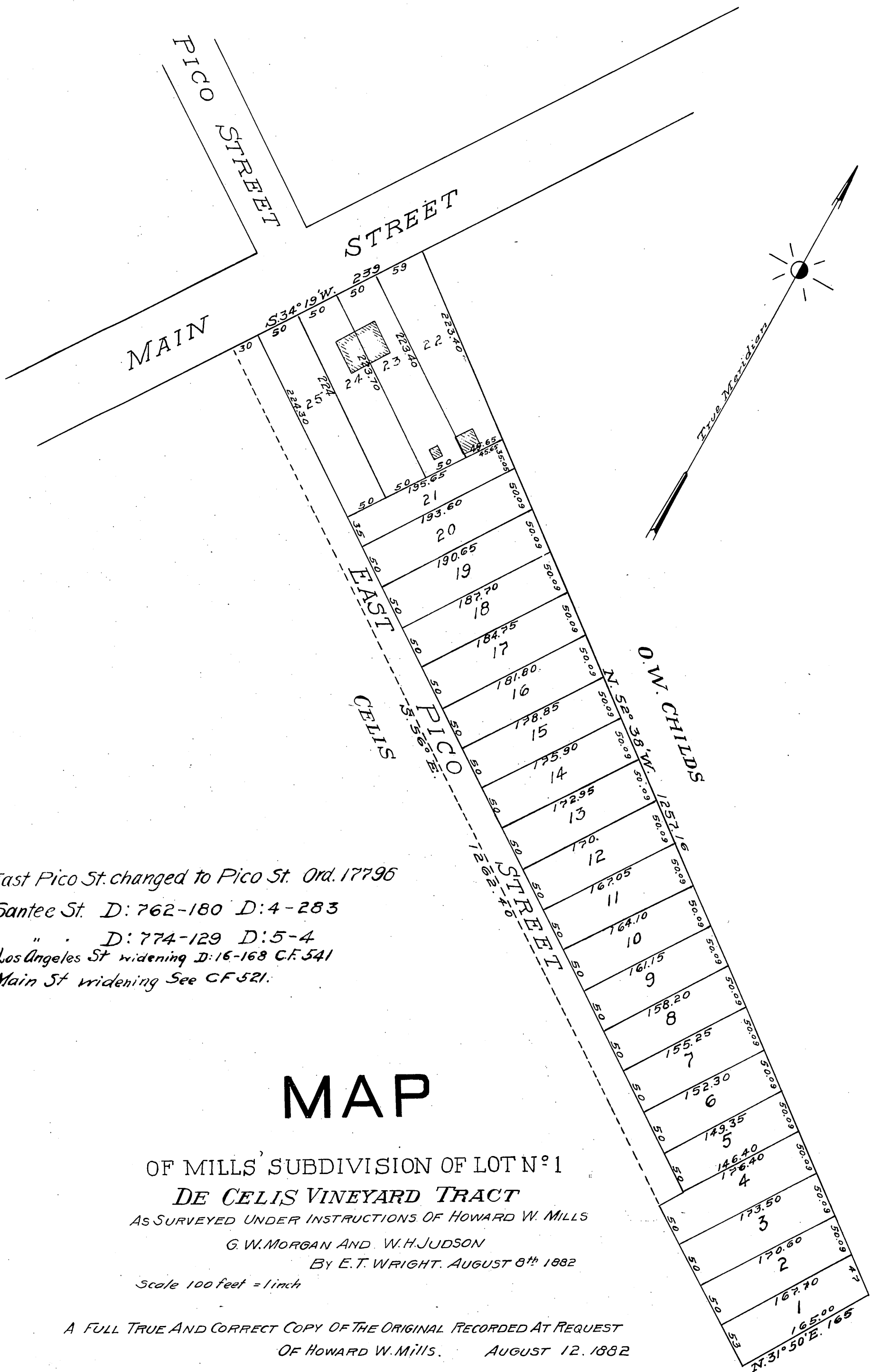
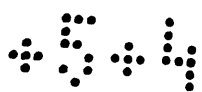


MR 5-4
3



East Pico St. changed to Pico St. Ord. 17796
 Santee St. D: 762-180 D: 4-283
 " " D: 774-129 D: 5-4
 Los Angeles St widening D: 16-168 C.F. 541
 Main St widening See CF 521.

MAP

OF MILLS' SUBDIVISION OF LOT N° 1
 DE CELIS VINEYARD TRACT
 AS SURVEYED UNDER INSTRUCTIONS OF HOWARD W. MILLS
 G. W. MORGAN AND W. H. JUDSON
 BY E. T. WRIGHT. AUGUST 8th 1882

Scale 100 feet = 1 inch

A FULL TRUE AND CORRECT COPY OF THE ORIGINAL RECORDED AT REQUEST
 OF HOWARD W. MILLS. AUGUST 12, 1882