

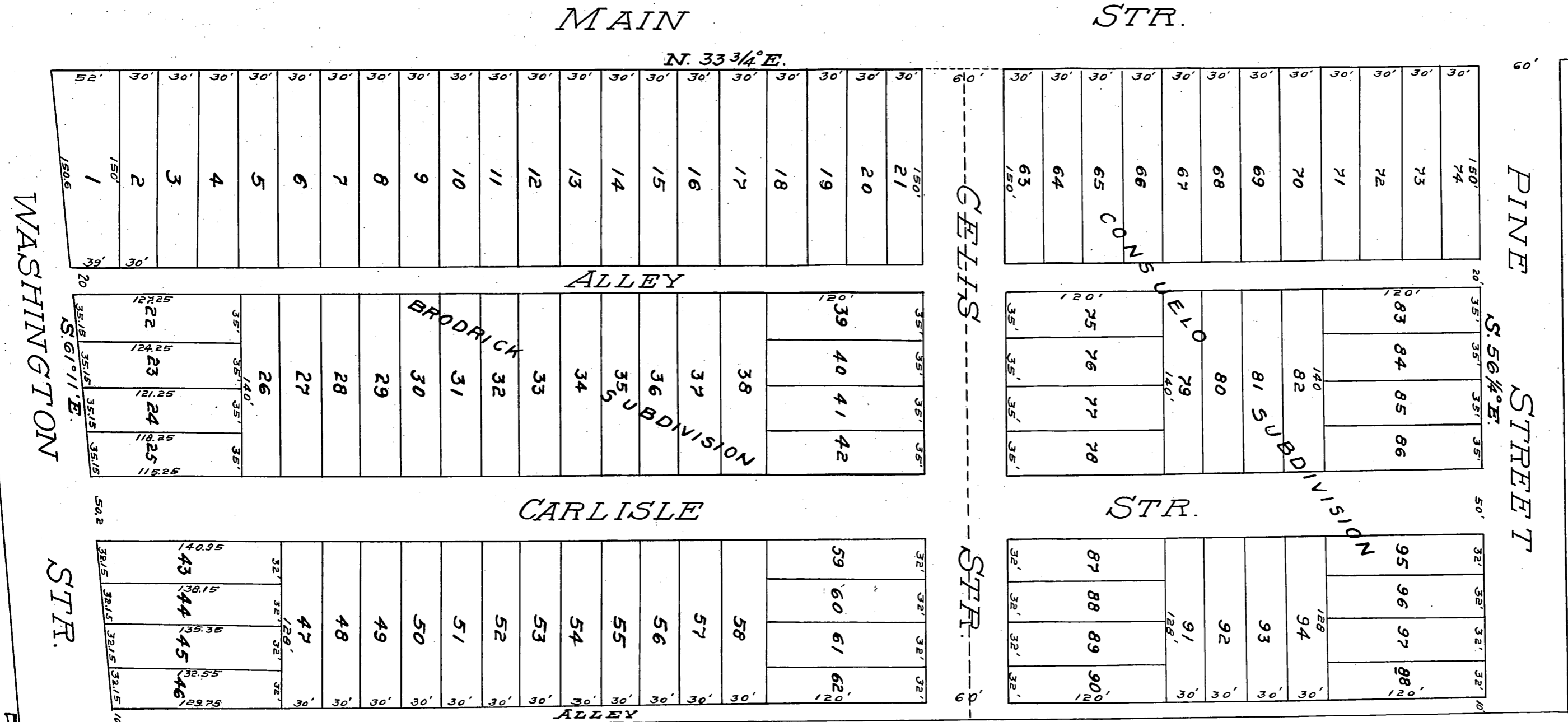
MAP

OF THE CONSUELO & BRODRICK SUBDIVISION OF THE CELIS VINEYARD TRACT IN LOS ANGELES CITY, CALA

SURVEYED AT REQUEST OF F. DE CELIS AND W. J. BRODRICK
BY HANSEN & SOLANO NOV. 1882

Recorded at Request of Joseph A. De Celis & Laura E. Brodrick
Nov. 29. 1882

True Courses Variation 14° 45' East
Scale of 80 ft. for inch



widening Los Angeles St C.F. 541 D. 16-168
" Main St See C.F. 521.

