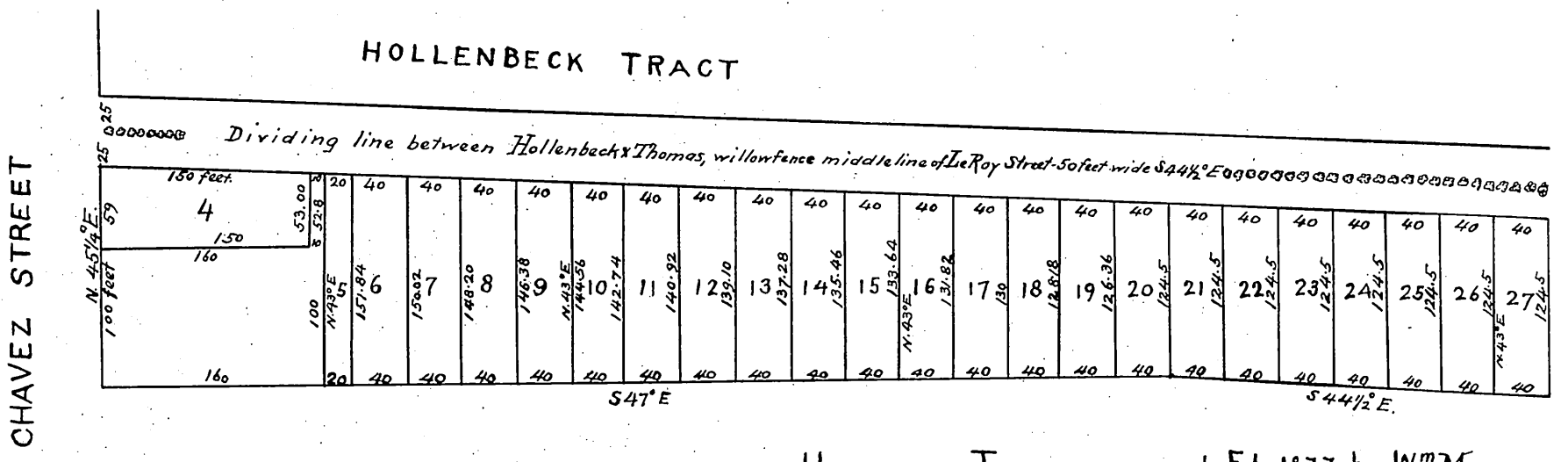


MR 5-102  
23

# H C THOMAS TRACT IN Los Angeles City Cal.

SURVEYED AT THE REQUEST OF H.C. THOMAS  
January 1883 by Hansen & Salano  
Scale of one inch to 60 feet, Magnetic Courses



Recorded Feb. 17<sup>th</sup> 1883, at 3<sup>1/2</sup> P.M.  
at request of H.C. Thomas

Completed  
5/1/83

5/1/83