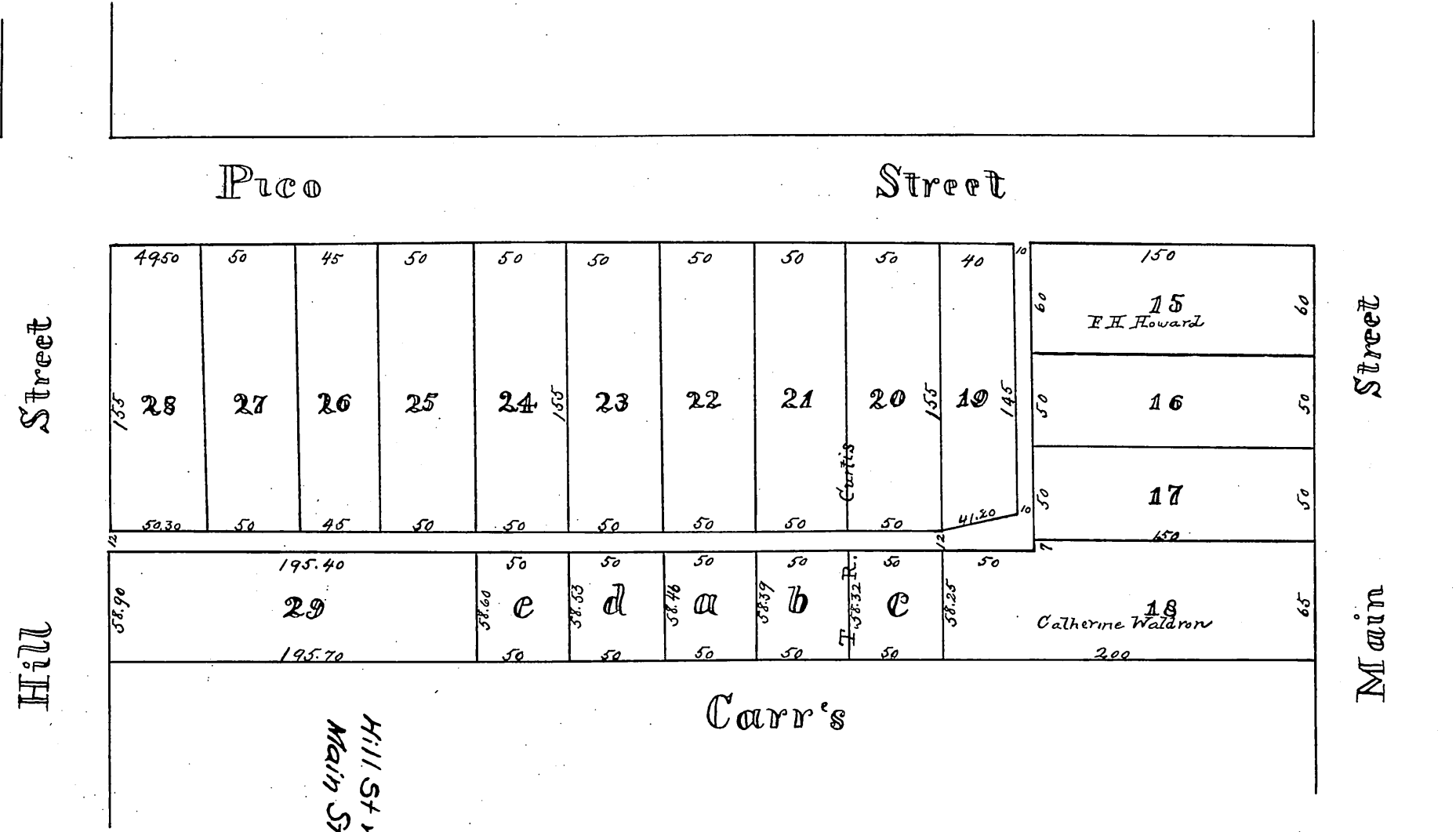


Comp'd
1887



MAP

of Subdivision of
 North Part of Carr
 Tract in Los Angeles
 City made by
 ET Wright Surveyor & CE
 at request of M.L. Wicks
 February 1883

SCALE 40 FEET TO AN INCH

Hill St widening D:16-98 CF 514
 Main St " " See CF 521.

Original reduced from scale of 40 to 80 feet per inch.

Recorded at request of M.L. Wicks Feb. 21 1883.

